

WATERSHED & KEY PLAN

OF THE

# RUSCOM RIVER DRAIN BANK PROTECTION

(Geographic Township of Gosfield South)

IN THE

TOWN OF KINGSVILLE

IN THE

COUNTY OF ESSEX • ONTARIO

*Gerard Road*  
GERARD ROAD, P.ENG.



**ROOD  
ENGINEERING  
INC.**  
CONSULTING ENGINEERS  
Leamington, Ontario  
519-322-1621

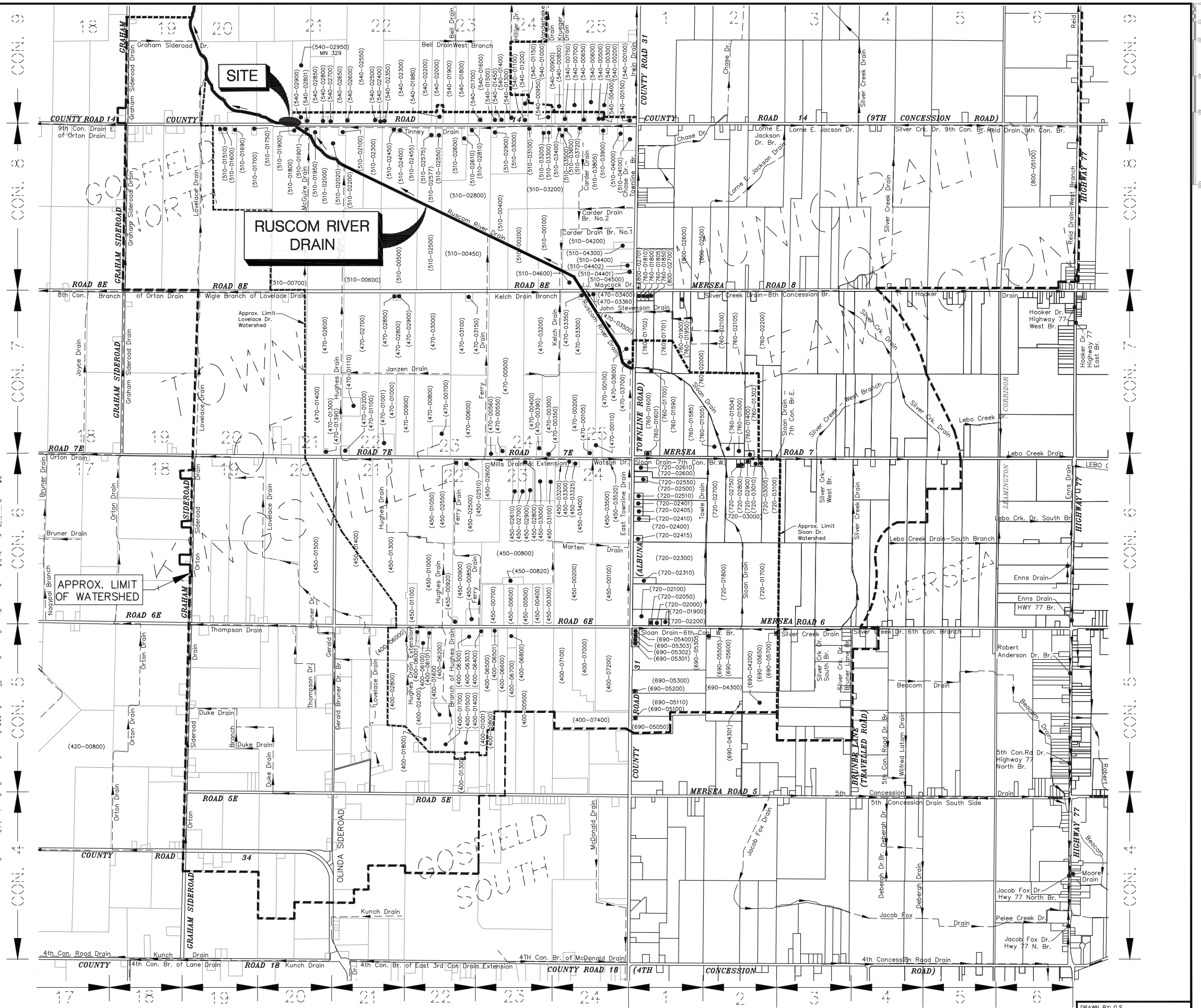
DATE: September 27th, 2017  
REV: December 7th, 2017

**TOWN OF KINGSVILLE**

MAYOR: NELSON SANTOS  
CLERK: JENNIFER ASTROLOGO  
DRAINAGE SUPERINTENDENT: KEN VEGH



**KEY PLAN**  
Scale = 1:100,000



## WATERSHED PLAN

Scale = 1:15,000

THESE PLANS HAVE BEEN REDUCED  
AND THE SCALE THEREFORE VARIES.  
FULL SCALE PLANS MAY BE VIEWED  
AT THE MUNICIPAL OFFICE.

DRAWN BY: G.S.  
PLOT CODE: 1:1  
COMPUTER FILE: RE12015D013.DWG  
FILE No.: RE12015D013  
SHEET No.: W1 OF 4