

Emily Ave - Lakeview Ave



Legend

Essex Municipalities

- <all other values>
- Kingsville

- Street
- Kingsville Assessment

Notes

0.75 ac

THIS MAP IS NOT TO BE USED FOR NAVIGATION

Copyright the Corporation of the County of Essex, 2012. Data herein is provided by the Corporation of the County of Essex on an 'as is' basis. Assessment parcel provided by Teranet Enterprises Inc. Data layers that appear on this map may or may not be accurate, current, or otherwise reliable.

0 24.32 48.6 Meters

1: 1,459





3/12/2025

168 County Rd 27 Cottam Lagoons




Legend

Essex Municipalities

-  <all other values>
-  Kingsville

Street

-  Kingsville Assessment

Notes

Key Required

THIS MAP IS NOT TO BE USED FOR NAVIGATION

Copyright the Corporation of the County of Essex, 2012. Data herein is provided by the Corporation of the County of Essex on an 'as is' basis. Assessment parcel provided by Teranet Enterprises Inc. Data layers that appear on this map may or may not be accurate, current, or otherwise reliable.

0 19.78 39.6 Meters

1: 1,187





2/12/2024

168 County Rd 27 Cottam Pump Station 1



Legend

Essex Municipalities

-  <all other values>
-  Kingsville

Street

-  Kingsville Assessment

Notes

Key Required

THIS MAP IS NOT TO BE USED FOR NAVIGATION

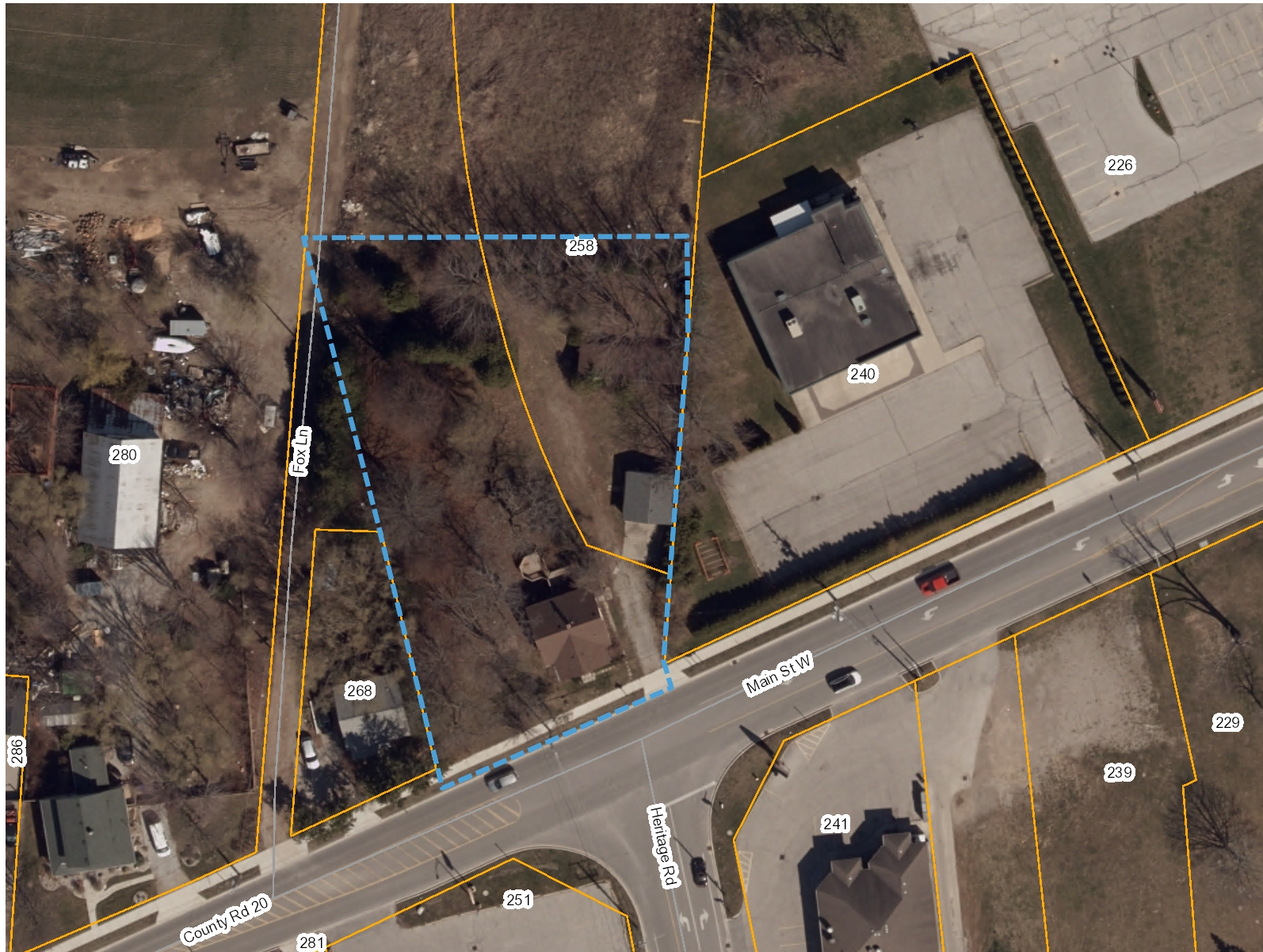
Copyright the Corporation of the County of Essex, 2012. Data herein is provided by the Corporation of the County of Essex on an 'as is' basis. Assessment parcel provided by Teranet Enterprises Inc. Data layers that appear on this map may or may not be accurate, current, or otherwise reliable.

0 9.89 19.8 Meters

1: 593



2/12/2024



Legend

Essex Municipalities

<all other values>

Kingsville

— Street

□ Kingsville Assessment

Notes

0.80 ac
Use blue dotted lines

THIS MAP IS NOT TO BE USED FOR NAVIGATION

Copyright the Corporation of the County of Essex, 2012. Data herein is provided by the Corporation of the County of Essex on an 'as is' basis. Assessment parcel provided by Teranet Enterprises Inc. Data layers that appear on this map may or may not be accurate, current, or otherwise reliable.

0 14.63 29.3 Meters

1: 878



3/12/2025



Legend

- Essex Municipalities
 - <all other values>
 - Kingsville
- Street
- Severance
- Kingsville Assessment

Notes

County Rd 50/ Heritage
Lot 1251
0.22 ac

THIS MAP IS NOT TO BE USED FOR NAVIGATION
Copyright the Corporation of the County of Essex, 2012. Data herein is
provided by the Corporation of the County of Essex on an 'as is' basis.
Assessment parcel provided by Teranet Enterprises Inc. Data layers that
appear on this map may or may not be accurate, current, or otherwise reliable.



1460 Rd 2 East Pumping Station And Right of Way



Legend

Essex Municipalities

<all other values>

Kingsville

Street

Kingsville Assessment

Notes

Key Required for Pumping station

THIS MAP IS NOT TO BE USED FOR NAVIGATION

Copyright the Corporation of the County of Essex, 2012. Data herein is provided by the Corporation of the County of Essex on an 'as is' basis. Assessment parcel provided by Teranet Enterprises Inc. Data layers that appear on this map may or may not be accurate, current, or otherwise reliable.

0 39.56 79.1 Meters

1: 2,373



2/12/2024

Arner Pump Station



Legend

Essex Municipalities

<all other values>

Kingsville

Street

Severance

Kingsville Assessment

Notes

Enter Map Description

Arner Pump Station

THIS MAP IS NOT TO BE USED FOR NAVIGATION

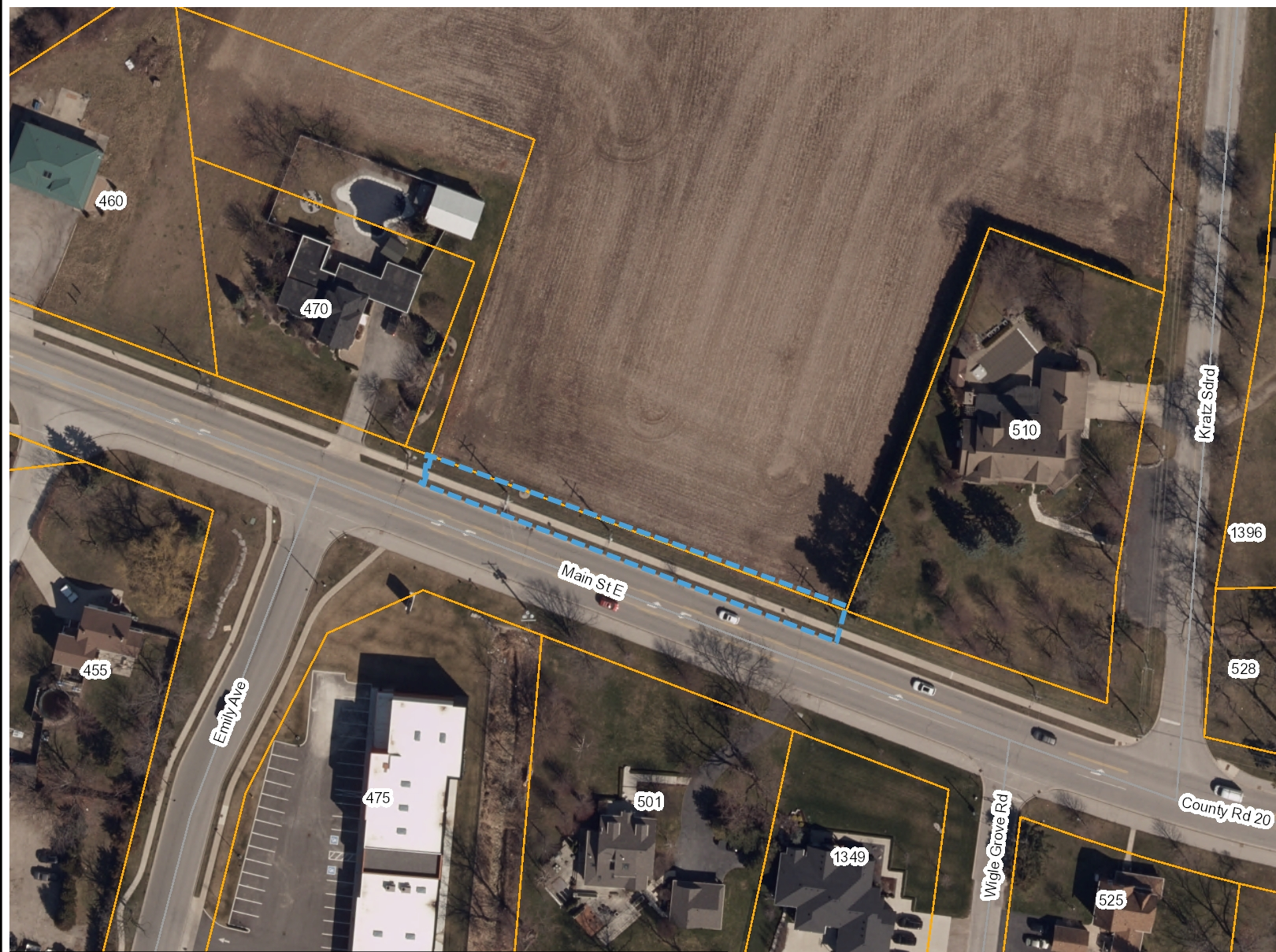
Copyright the Corporation of the County of Essex, 2012. Data herein is provided by the Corporation of the County of Essex on an 'as is' basis. Assessment parcel provided by Teranet Enterprises Inc. Data layers that appear on this map may or may not be accurate, current, or otherwise reliable.

0 6.94 13.9Meters

1: 416



1/13/2017



Legend

Essex Municipalities

- <all other values>
- Kingsville

Street

- Kingsville Assessment

Notes

0.10 ac
Use blue dotted lines

THIS MAP IS NOT TO BE USED FOR NAVIGATION

Copyright the Corporation of the County of Essex, 2012. Data herein is provided by the Corporation of the County of Essex on an 'as is' basis. Assessment parcel provided by Teranet Enterprises Inc. Data layers that appear on this map may or may not be accurate, current, or otherwise reliable.

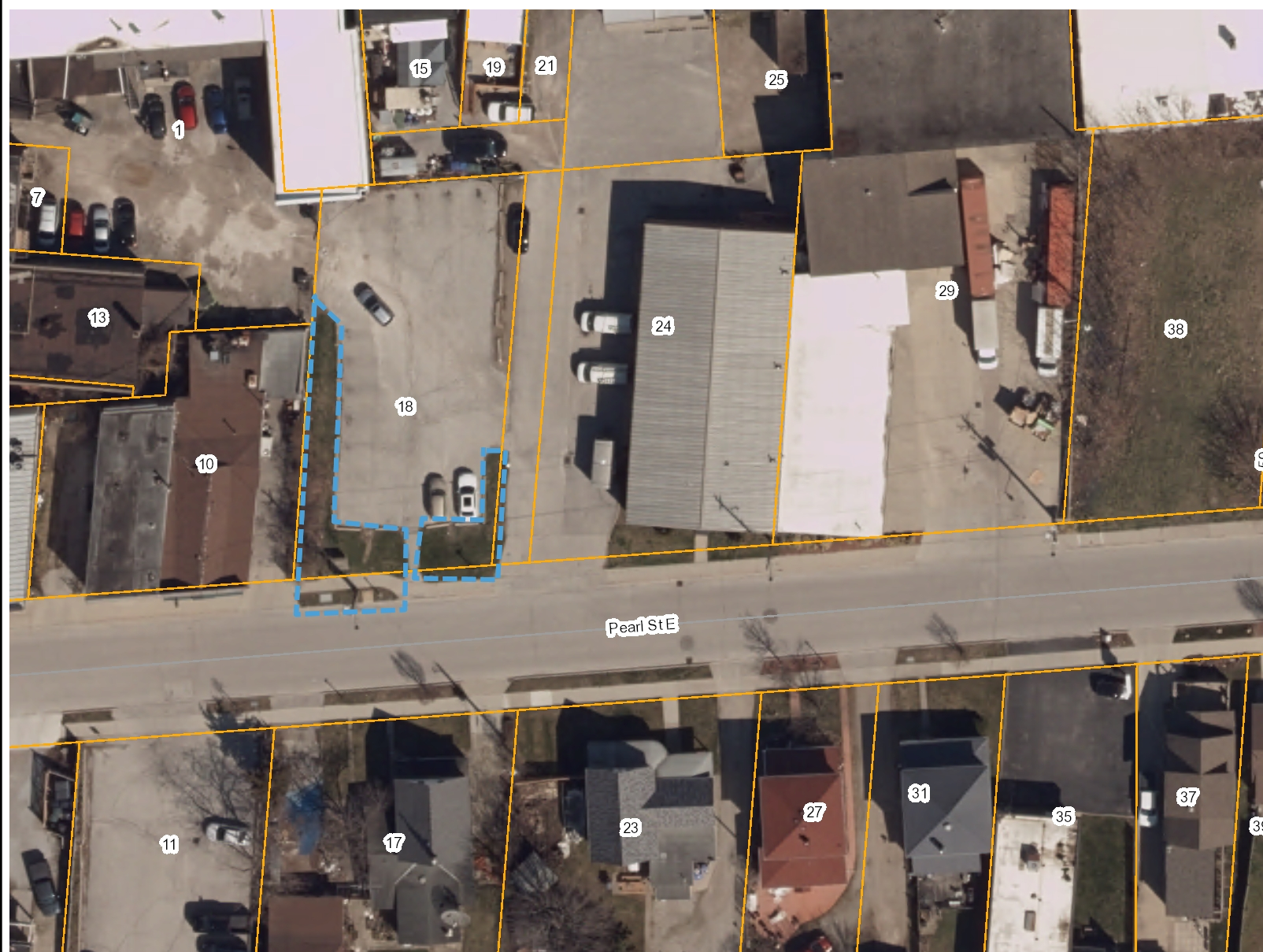
0 20.00 40.0 Meters

1: 1,200





3/12/2025

ELK Parking Lot



Legend

Essex Municipalities

-  <all other values>
-  Kingsville

Street

-  Kingsville Assessment

Notes

18 Pearl St E
0.3 ac
use blue dotted lines

THIS MAP IS NOT TO BE USED FOR NAVIGATION

Copyright the Corporation of the County of Essex, 2012. Data herein is provided by the Corporation of the County of Essex on an 'as is' basis. Assessment parcel provided by Teranet Enterprises Inc. Data layers that appear on this map may or may not be accurate, current, or otherwise reliable.

0 10.21 20.4 Meters

1: 613



3/11/2025

Empty Lot between 63 & 67 Golfview



Legend

Notes

0.17 ac

THIS MAP IS NOT TO BE USED FOR NAVIGATION
 Copyright the Corporation of the County of Essex, 2012. Data herein is
 provided by the Corporation of the County of Essex on an 'as is' basis.
 Assessment parcel provided by Teranet Enterprises Inc. Data layers that
 appear on this map may or may not be accurate, current, or otherwise reliable.

0 4.94 9.9Meters

1: 297



2/12/2024

Ford Pump Station



Legend

Essex Municipalities

<all other values>

Kingsville

Street

Kingsville Assessment

Notes

0.09 ac

THIS MAP IS NOT TO BE USED FOR NAVIGATION

Copyright the Corporation of the County of Essex, 2012. Data herein is provided by the Corporation of the County of Essex on an 'as is' basis. Assessment parcel provided by Teranet Enterprises Inc. Data layers that appear on this map may or may not be accurate, current, or otherwise reliable.

0 17.59 35.2 Meters

1: 1,055



3/12/2025

Harold Cull Drive



Legend

Essex Municipalities

<all other values>

Kingsville

Street

Kingsville Assessment

Notes

Harold Cull Drive
1.85 ac
Heritage to Queen St
Dotted blue line

THIS MAP IS NOT TO BE USED FOR NAVIGATION

Copyright the Corporation of the County of Essex, 2012. Data herein is provided by the Corporation of the County of Essex on an 'as is' basis. Assessment parcel provided by Teranet Enterprises Inc. Data layers that appear on this map may or may not be accurate, current, or otherwise reliable.

0 86.20 172.4 Meters

1: 5,172



3/12/2025

Hazel Pond



Legend

Essex Municipalities

<all other values>

Kingsville

Street

Severance

Kingsville Assessment

Notes

0.60 acres

THIS MAP IS NOT TO BE USED FOR NAVIGATION

Copyright the Corporation of the County of Essex, 2012. Data herein is provided by the Corporation of the County of Essex on an 'as is' basis. Assessment parcel provided by Teranet Enterprises Inc. Data layers that appear on this map may or may not be accurate, current, or otherwise reliable.

0 11.16 22.3 Meters

1: 669





2/23/2021




Heritage Pump Station



Legend

Essex Municipalities

-  <all other values>
-  Kingsville

-  Street
-  Severance
-  Kingsville Assessment

Notes

Heritage Rd
0.35 acres

THIS MAP IS NOT TO BE USED FOR NAVIGATION

Copyright the Corporation of the County of Essex, 2012. Data herein is provided by the Corporation of the County of Essex on an 'as is' basis. Assessment parcel provided by Teranet Enterprises Inc. Data layers that appear on this map may or may not be accurate, current, or otherwise reliable.

0 15.45 30.9Meters

1: 927



2/23/2021

Heritage Walking Path



Legend

Essex Municipalities

<all other values>

Kingsville

Street

Severance

Kingsville Assessment

Notes

Heritage Rd
1.40 acres

THIS MAP IS NOT TO BE USED FOR NAVIGATION

Copyright the Corporation of the County of Essex, 2012. Data herein is provided by the Corporation of the County of Essex on an 'as is' basis. Assessment parcel provided by Teranet Enterprises Inc. Data layers that appear on this map may or may not be accurate, current, or otherwise reliable.

0 120.65 241.3 Meters

1: 7,238



2/23/2021

Jans Island Bed



Legend

- Essex Municipalities
- <all other values>
 - Kingsville
 - Street
 - Severance
 - Kingsville Assessment

Notes

Centre island at the end of Jans Cres
0.06 ac

THIS MAP IS NOT TO BE USED FOR NAVIGATION
Copyright the Corporation of the County of Essex, 2012. Data herein is provided by the Corporation of the County of Essex on an 'as is' basis. Assessment parcel provided by Teranet Enterprises Inc. Data layers that appear on this map may or may not be accurate, current, or otherwise reliable.

0 6.31 12.6 Meters

1: 379



2/26/2021



Legend

Essex Municipalities

<all other values>

Kingsville

Street

Kingsville Assessment

0 119.33 238.7
Meters

1: 7,159

3/12/2025

Notes

Road 2 to Main Street
West side of Road only along multi use path
1.15 ac

THIS MAP IS NOT TO BE USED FOR NAVIGATION

Copyright the Corporation of the County of Essex, 2012. Data herein is provided by the Corporation of the County of Essex on an 'as is' basis. Assessment parcel provided by Teranet Enterprises Inc. Data layers that appear on this map may or may not be accurate, current, or otherwise reliable.

67 Heritage Rd Kingsville Pumping Station Lower Area



Legend

Essex Municipalities

<all other values>

Kingsville

Street

Kingsville Assessment

Notes

.18 ac

THIS MAP IS NOT TO BE USED FOR NAVIGATION

Copyright the Corporation of the County of Essex, 2012. Data herein is provided by the Corporation of the County of Essex on an 'as is' basis. Assessment parcel provided by Teranet Enterprises Inc. Data layers that appear on this map may or may not be accurate, current, or otherwise reliable.

0 9.89 19.8 Meters

1: 593



2/12/2024

McCallum Island Bed



Legend

Essex Municipalities

- <all other values>
- Kingsville

- Street
- Severance
- Kingsville Assessment

Notes

Accross from 105 McCallum Dr
0.07 ac

THIS MAP IS NOT TO BE USED FOR NAVIGATION

Copyright the Corporation of the County of Essex, 2012. Data herein is provided by the Corporation of the County of Essex on an 'as is' basis. Assessment parcel provided by Teranet Enterprises Inc. Data layers that appear on this map may or may not be accurate, current, or otherwise reliable.

0 6.31 12.6 Meters

1: 379



2/26/2021



Legend

Essex Municipalities

	<all other values>
--	--------------------

Kingsville

Street

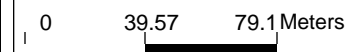
Kingsville Assessment

Notes

1.07 ac
Use blue dotted lines

THIS MAP IS NOT TO BE USED FOR NAVIGATION

Copyright the Corporation of the County of Essex, 2012. Data herein is provided by the Corporation of the County of Essex on an 'as is' basis. Assessment parcel provided by Teranet Enterprises Inc. Data layers that appear on this map may or may not be accurate, current, or otherwise reliable.



1: 2,374



3/11/2025

Normandy Pond



Legend

Essex Municipalities

-  <all other values>
-  Kingsville

— Street

 Kingsville Assessment

Notes

0.80 ac
Use blue dotted lines

THIS MAP IS NOT TO BE USED FOR NAVIGATION

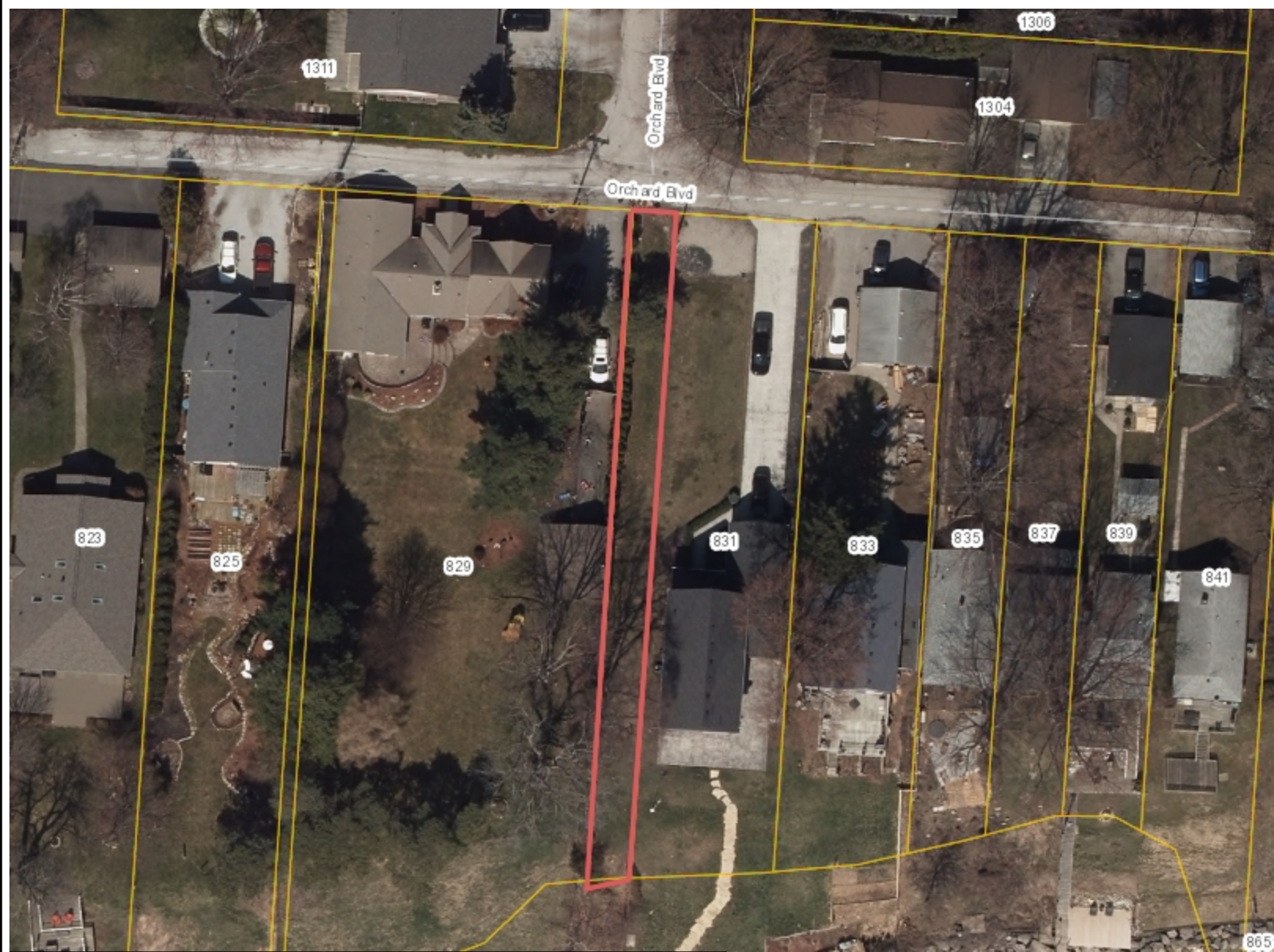
Copyright the Corporation of the County of Essex, 2012. Data herein is provided by the Corporation of the County of Essex on an 'as is' basis. Assessment parcel provided by Teranet Enterprises Inc. Data layers that appear on this map may or may not be accurate, current, or otherwise reliable.

0 20.59 41.2 Meters

1: 1,235



3/12/2025



Legend

Essex Municipalities

<all other values>

Kingsville

Street

Severance

Kingsville Assessment

Notes

0.10 acres

THIS MAP IS NOT TO BE USED FOR NAVIGATION

Copyright the Corporation of the County of Essex, 2012. Data herein is provided by the Corporation of the County of Essex on an 'as is' basis. Assessment parcel provided by Teranet Enterprises Inc. Data layers that appear on this map may or may not be accurate, current, or otherwise reliable.

0 10.65 21.3 Meters

1: 639



2/23/2021



Legend

Essex Municipalities

<all other values>

Kingsville

Street

Severance

Kingsville Assessment

Notes

0.25 acres

THIS MAP IS NOT TO BE USED FOR NAVIGATION

Copyright the Corporation of the County of Essex, 2012. Data herein is provided by the Corporation of the County of Essex on an 'as is' basis. Assessment parcel provided by Teranet Enterprises Inc. Data layers that appear on this map may or may not be accurate, current, or otherwise reliable.

0 10.37 20.7 Meters

1: 622



2/23/2021

Perone Playground and Right of Way 1833 Queens Valley Ruthven



Legend

Essex Municipalities

<all other values>

Kingsville

Street

Kingsville Assessment

Notes

1833 Queens Valley Drive, Ruthven
1 ac

THIS MAP IS NOT TO BE USED FOR NAVIGATION

Copyright the Corporation of the County of Essex, 2012. Data herein is provided by the Corporation of the County of Essex on an 'as is' basis. Assessment parcel provided by Teranet Enterprises Inc. Data layers that appear on this map may or may not be accurate, current, or otherwise reliable.

0 9.89 19.8 Meters

1: 593



2/12/2024

Pigeon Bay Lane Right of Way



Legend

Essex Municipalities

- <all other values>
- Kingsville

Street

- Kingsville Assessment

Notes

0.13 ac

THIS MAP IS NOT TO BE USED FOR NAVIGATION

Copyright the Corporation of the County of Essex, 2012. Data herein is provided by the Corporation of the County of Essex on an 'as is' basis. Assessment parcel provided by Teranet Enterprises Inc. Data layers that appear on this map may or may not be accurate, current, or otherwise reliable.

0 4.94 9.9Meters

1: 297



2/12/2024

Storm Pond SE of 18 Whitewood Cottam



Legend

Essex Municipalities

- <all other values>
- Kingsville

Street

- Kingsville Assessment

Notes

1.92 ac

THIS MAP IS NOT TO BE USED FOR NAVIGATION

Copyright the Corporation of the County of Essex, 2012. Data herein is provided by the Corporation of the County of Essex on an 'as is' basis. Assessment parcel provided by Teranet Enterprises Inc. Data layers that appear on this map may or may not be accurate, current, or otherwise reliable.

0 19.78 39.6 Meters

1: 1,187



2/12/2024

Queen St Pump Station



Legend

Essex Municipalities

<all other values>

Kingsville

Street

Severance

Kingsville Assessment

Notes

1 acre

THIS MAP IS NOT TO BE USED FOR NAVIGATION

Copyright the Corporation of the County of Essex, 2012. Data herein is provided by the Corporation of the County of Essex on an 'as is' basis. Assessment parcel provided by Teranet Enterprises Inc. Data layers that appear on this map may or may not be accurate, current, or otherwise reliable.

0 23.41 46.8 Meters

1: 1,404



2/23/2021

Right-of-way: between 55-57 Bellevue extends down to redwood in Cottam



Legend

Essex Municipalities

<all other values>

Kingsville

Street

Kingsville Assessment

Notes

0.12 ac

THIS MAP IS NOT TO BE USED FOR NAVIGATION

Copyright the Corporation of the County of Essex, 2012. Data herein is provided by the Corporation of the County of Essex on an 'as is' basis. Assessment parcel provided by Teranet Enterprises Inc. Data layers that appear on this map may or may not be accurate, current, or otherwise reliable.

0 24.37 48.7 Meters

1: 1,462



4/9/2024

Right of Way North Side of Cranberry



Legend

Essex Municipalities

- <all other values>
- Kingsville

Street

- Kingsville Assessment

Notes

0.06 ac

THIS MAP IS NOT TO BE USED FOR NAVIGATION

Copyright the Corporation of the County of Essex, 2012. Data herein is provided by the Corporation of the County of Essex on an 'as is' basis. Assessment parcel provided by Teranet Enterprises Inc. Data layers that appear on this map may or may not be accurate, current, or otherwise reliable.

0 9.89 19.8 Meters

1: 593



2/12/2024

Sandybrook Pond



Legend

- Essex Municipalities
 - <all other values>
 - Kingsville
- Street
- Severance
- Kingsville Assessment

Notes

Enter Map Description

Sandybrook Pond

2.66 ac

THIS MAP IS NOT TO BE USED FOR NAVIGATION

Copyright the Corporation of the County of Essex, 2012. Data herein is provided by the Corporation of the County of Essex on an 'as is' basis. Assessment parcel provided by Teranet Enterprises Inc. Data layers that appear on this map may or may not be accurate, current, or otherwise reliable.

0 25.65 51.3Meters

1: 1,539



5/16/2016

Timbercreek Pond



Legend

Essex Municipalities

<all other values>

Kingsville

Street

Kingsville Assessment

Notes

189 Grandview Ave
1.6 ac

THIS MAP IS NOT TO BE USED FOR NAVIGATION

Copyright the Corporation of the County of Essex, 2012. Data herein is provided by the Corporation of the County of Essex on an 'as is' basis. Assessment parcel provided by Teranet Enterprises Inc. Data layers that appear on this map may or may not be accurate, current, or otherwise reliable.

0 24.32 48.6 Meters

1: 1,459



3/11/2025

Treatment Plant



Legend

Essex Municipalities

<all other values>

Kingsville

Street

Severance

Kingsville Assessment

Notes

Located at 690 Hertiage Rd (County Rd 50)

1.85 ac

Only to be cut during operating business hours
of the water treatment plant - M-F 8-3

THIS MAP IS NOT TO BE USED FOR NAVIGATION

Copyright the Corporation of the County of Essex, 2012. Data herein is provided by the Corporation of the County of Essex on an 'as is' basis. Assessment parcel provided by Teranet Enterprises Inc. Data layers that appear on this map may or may not be accurate, current, or otherwise reliable.

0 50.49 101.0 Meters

1: 3,029



2/28/2021

Victoria Right of Way



Legend

Essex Municipalities

<all other values>

Kingsville

Street

Severance

Kingsville Assessment

Notes

0.15 acres

THIS MAP IS NOT TO BE USED FOR NAVIGATION

Copyright the Corporation of the County of Essex, 2012. Data herein is provided by the Corporation of the County of Essex on an 'as is' basis. Assessment parcel provided by Teranet Enterprises Inc. Data layers that appear on this map may or may not be accurate, current, or otherwise reliable.

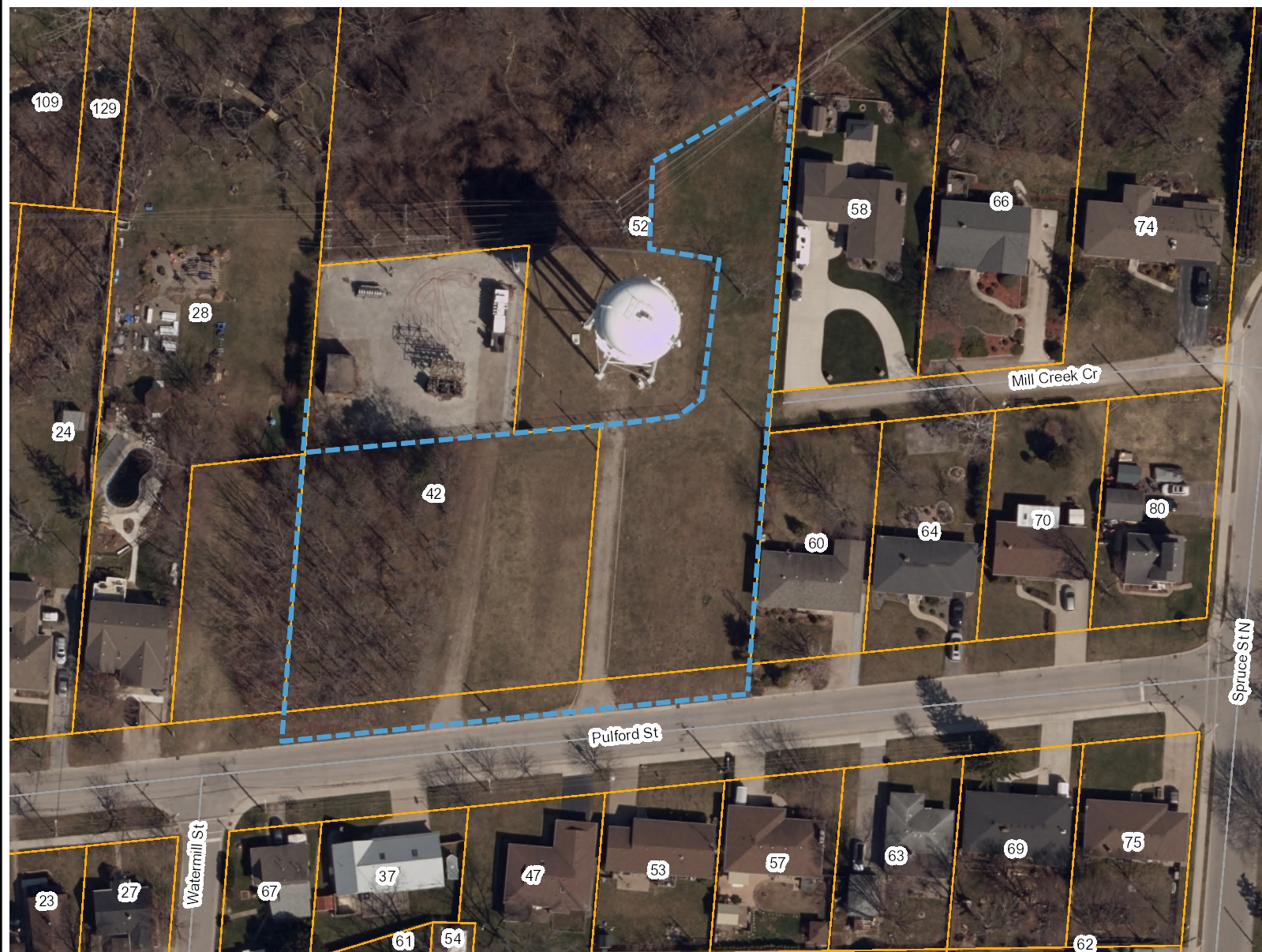
0 7.19 14.4 Meters

1: 431



2/23/2021

Water Tower



Legend

Essex Municipalities

<all other values>

Kingsville

Street

Kingsville Assessment

Notes

52 Pulford Street
1.26 ac

THIS MAP IS NOT TO BE USED FOR NAVIGATION

Copyright the Corporation of the County of Essex, 2012. Data herein is provided by the Corporation of the County of Essex on an 'as is' basis. Assessment parcel provided by Teranet Enterprises Inc. Data layers that appear on this map may or may not be accurate, current, or otherwise reliable.

0 17.65 35.3 Meters

1: 1,059



3/12/2025

Wigle Drain



Legend

Essex Municipalities

<all other values>

Kingsville

Street

Severance

Kingsville Assessment

Notes

0.13 acres

THIS MAP IS NOT TO BE USED FOR NAVIGATION

Copyright the Corporation of the County of Essex, 2012. Data herein is provided by the Corporation of the County of Essex on an 'as is' basis. Assessment parcel provided by Teranet Enterprises Inc. Data layers that appear on this map may or may not be accurate, current, or otherwise reliable.

0 26.18 52.4 Meters

1: 1,570



2/23/2021