

PLAN OF SURVEY OF  
PART OF LOT 19  
CONCESSION 10  
GEOGRAPHIC TOWNSHIP OF GOSFIELD NORTH  
TOWN OF KINGSVILLE  
COUNTY OF ESSEX

SCALE 1 : 500 METRES  
0 2 4 6 8 10 15 20 40 60  
SURVEYORS ON SITE INC.

THE INTENDED PLOT SIZE OF THIS PLAN IS 609mm IN WIDTH BY 457mm IN HEIGHT WHEN PLOTTED AT A SCALE OF 1:500.

LEGEND

□	.....	MONUMENT PLANTED
■	.....	MONUMENT FOUND
SIB	.....	STANDARD IRON BAR
IB	.....	IRON BAR
M	.....	MEASURED
S	.....	SET
P1	.....	PLAN 12R-922
P2	.....	PLAN 12R-7140
1040	.....	WILLIAM J. SETTERINGTON LTD.
1341	.....	RICHARD W. MURRAY, O.L.S.
1528	.....	VERHAEGEN, STUBBERFIELD, HARTLEY, BREWER, BEZAIRE INC.
OU	.....	ORIGIN UNKNOWN
UP	.....	UTILITY POLE
AN	.....	ANCHOR POINT

SCHEDULE

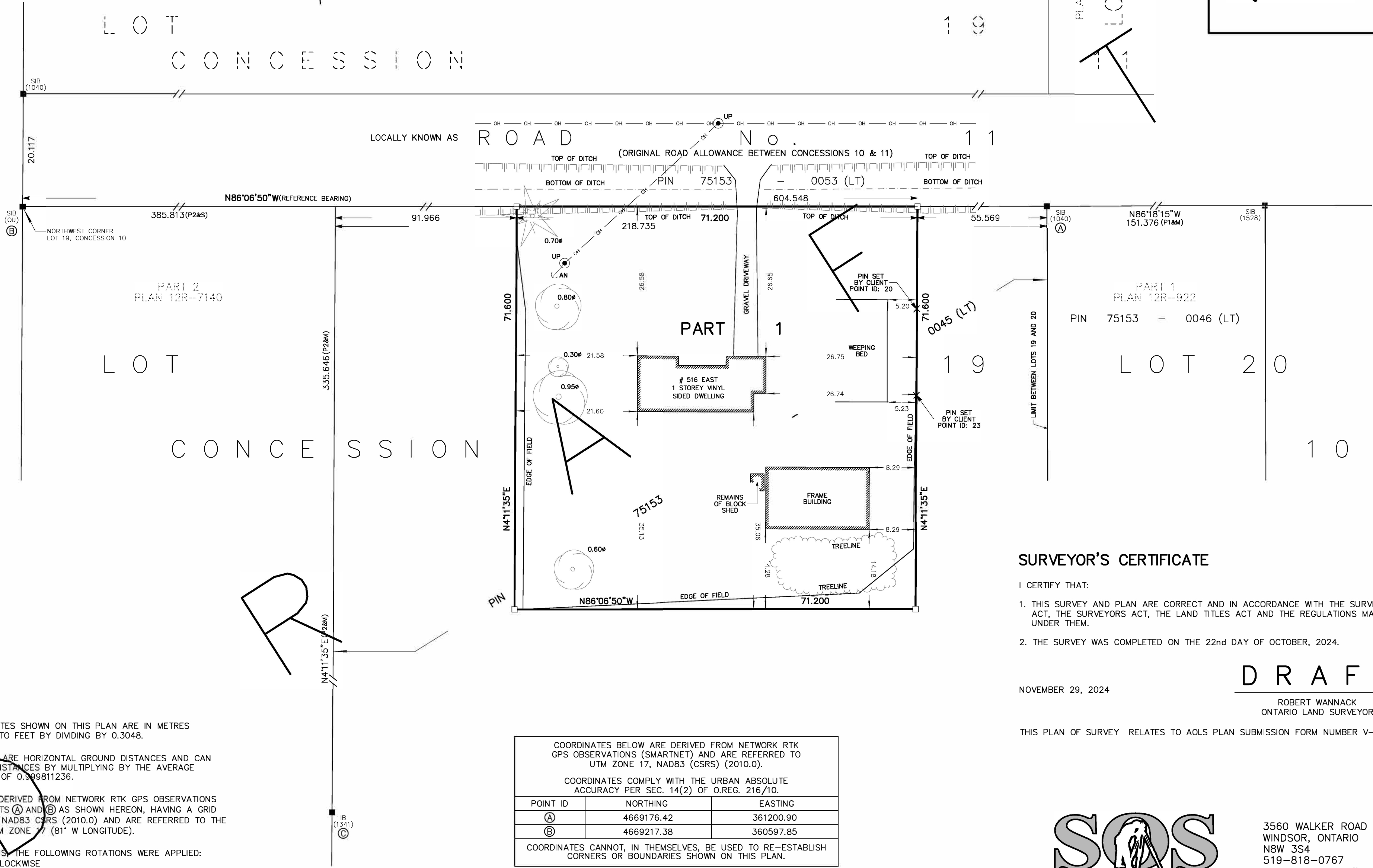
PART	PART OF LOT	CONCESSION	PART OF PIN	AREA (m <sup>2</sup> )
1	19	10	PIN 75153-0045 (LT)	5097.9

Appendix B

DRAFT

GRAHAM SIDE ROAD

LOT  
CONCESSION



SURVEYOR'S CERTIFICATE

I CERTIFY THAT:  
1. THIS SURVEY AND PLAN ARE CORRECT AND IN ACCORDANCE WITH THE SURVEYS ACT, THE SURVEYORS ACT, THE LAND TITLES ACT AND THE REGULATIONS MADE UNDER THEM.  
2. THE SURVEY WAS COMPLETED ON THE 22nd DAY OF OCTOBER, 2024.

DRAFT

NOVEMBER 29, 2024

ROBERT WANNACK  
ONTARIO LAND SURVEYOR

THIS PLAN OF SURVEY RELATES TO AOLS PLAN SUBMISSION FORM NUMBER V-X.

NOTES

DISTANCES AND COORDINATES SHOWN ON THIS PLAN ARE IN METRES AND CAN BE CONVERTED TO FEET BY DIVIDING BY 0.3048.

DISTANCES ON THIS PLAN ARE HORIZONTAL GROUND DISTANCES AND CAN BE CONVERTED TO GRID DISTANCES BY MULTIPLYING BY THE AVERAGE COMBINED SCALE FACTOR OF 0.999811236.

BEARINGS ARE UTM GRID DERIVED FROM NETWORK RTK GPS OBSERVATIONS (SMARTNET) ON MONUMENTS (A) AND (B) AS SHOWN HEREON, HAVING A GRID BEARING OF N86°06'50\"W, NAD83 CSRS (2010.0) AND ARE REFERRED TO THE CENTRAL MERIDIAN OF UTM ZONE 17 (81° W LONGITUDE).

FOR BEARING COMPARISONS THE FOLLOWING ROTATIONS WERE APPLIED:  
P2 - 1°07'05\" CLOCKWISE

COORDINATES BELOW ARE DERIVED FROM NETWORK RTK GPS OBSERVATIONS (SMARTNET) AND ARE REFERRED TO UTM ZONE 17, NAD83 (CSRS) (2010.0).		
COORDINATES COMPLY WITH THE URBAN ABSOLUTE ACCURACY PER SEC. 14(2) OF O.REG. 216/10.		
POINT ID	NORTHING	EASTING
(A)	4669176.42	361200.90
(B)	4669217.38	360597.85
COORDINATES CANNOT, IN THEMSELVES, BE USED TO RE-ESTABLISH CORNERS OR BOUNDARIES SHOWN ON THIS PLAN.		



3560 WALKER ROAD  
WINDSOR, ONTARIO  
N8W 3S4  
519-818-0767  
www.surveyorsonsite.com