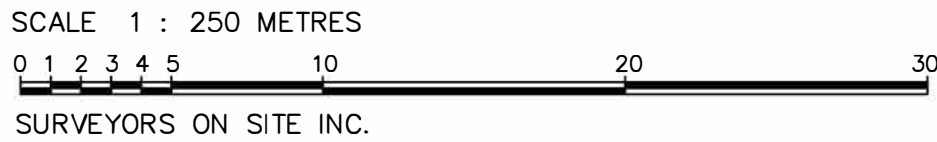


PLAN OF SURVEY OF
PART OF LOT 22
CONCESSION 7
GEOGRAPHIC TOWNSHIP OF GOSFIELD NORTH
TOWN OF KINGSVILLE
COUNTY OF ESSEX



THE INTENDED PLOT SIZE OF THIS PLAN IS 609mm IN WIDTH BY 558mm IN HEIGHT WHEN PLOTTED AT A SCALE OF 1:250.

LEGEND

- MONUMENT PLANTED
- MONUMENT FOUND
- SIB STANDARD IRON BAR
- IB IRON BAR
- RB ROCK BAR
- PB PLASTIC BAR
- M MEASURED
- S SET
- P1 PLAN 12R-14910
- P2 PLAN 12R-10151
- 1341 RICHARD W. MURRAY, O.E.S.
- 1528 VERHAEGEN, STUBBERFIELD, HARTLEY, BREWER, BEZAIRE INC.
- OU ORIGIN UNKNOWN
- PWF POST & WIRE FENCE
- UP UTILITY POLE
- OH- OVERHEAD UTILITY WIRES
- AN ANCHOR POINT

NOTES

DISTANCES AND COORDINATES SHOWN ON THIS PLAN ARE IN METRES AND CAN BE CONVERTED TO FEET BY DIVIDING BY 0.3048.

DISTANCES ON THIS PLAN ARE HORIZONTAL GROUND DISTANCES AND CAN BE CONVERTED TO GRID DISTANCES BY MULTIPLYING BY THE AVERAGE COMBINED SCALE FACTOR OF 0.999814310.

BEARINGS ARE UTM GRID DERIVED FROM NETWORK RTK GPS OBSERVATIONS (SMARTNET) ON MONUMENTS (A) AND (B) AS SHOWN HEREON, HAVING A GRID BEARING OF N86°34'15"W, NAD83 CSRS (2010.0) AND ARE REFERRED TO THE CENTRAL MERIDIAN OF UTM ZONE 17 (81° W LONGITUDE).

FOR BEARING COMPARISONS, THE FOLLOWING ROTATIONS WERE APPLIED:
P1,P2 - 0°07'10" CLOCKWISE

SURVEYOR'S CERTIFICATE

I CERTIFY THAT:

- THIS SURVEY AND PLAN ARE CORRECT AND IN ACCORDANCE WITH THE SURVEYS ACT, THE SURVEYORS ACT, THE LAND TITLES ACT AND THE REGULATIONS MADE UNDER THEM.
- THE SURVEY WAS COMPLETED ON THE 5th DAY OF NOVEMBER, 2024.

NOVEMBER 18, 2024

ROBERT WANNACK
ONTARIO LAND SURVEYOR

THIS PLAN OF SURVEY RELATES TO AOLS PLAN SUBMISSION FORM NUMBER V-X.

SCHEDULE

PART	PART OF LOT	CONCESSION	PART OF PIN	AREA (m ²)
1	22	7	PIN 75151-0051 (LT)	2249.1

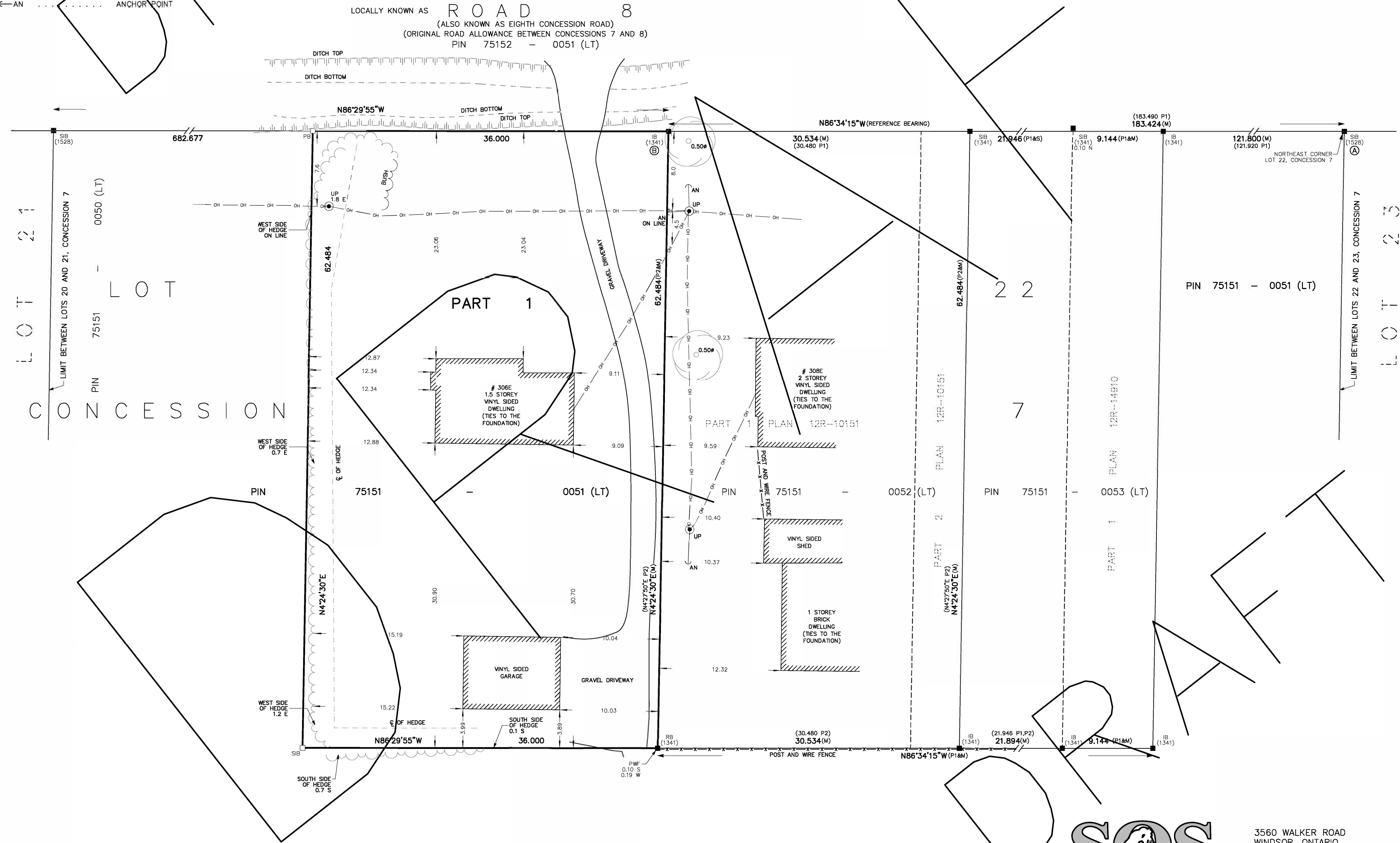
Appendix B

COORDINATES BELOW ARE DERIVED FROM NETWORK RTK GPS OBSERVATIONS (SMARTNET) AND ARE REFERRED TO UTM ZONE 17, NAD83 (CSRS) (2010.0).

COORDINATES COMPLY WITH THE URBAN ABSOLUTE ACCURACY PER SEC. 14(2) OF O.REG. 216/10.

POINT ID	NORTHING	EASTING
(A)	4664913.85	362705.37
(B)	4664924.82	362522.32

COORDINATES CANNOT, IN THEMSELVES, BE USED TO RE-ESTABLISH CORNERS OR BOUNDARIES SHOWN ON THIS PLAN.



3560 WALKER ROAD
WINDSOR, ONTARIO
N8W 3S4
519-818-0767
www.surveyorsonsite.com