

DRAFT PLAN OF SUBDIVISION OF PART OF LOTS 8, 9 and 10, CONCESSION 1, WESTERN DIVISION, GEOGRAPHIC TOWNSHIP OF GOSFIELD SOUTH, NOW IN THE TOWN OF KINGVILLE, COUNTY OF ESSEX, ONTARIO, VERHAEGEN LAND SURVEYORS, A DIVISION OF J.D. BARNES LTD.

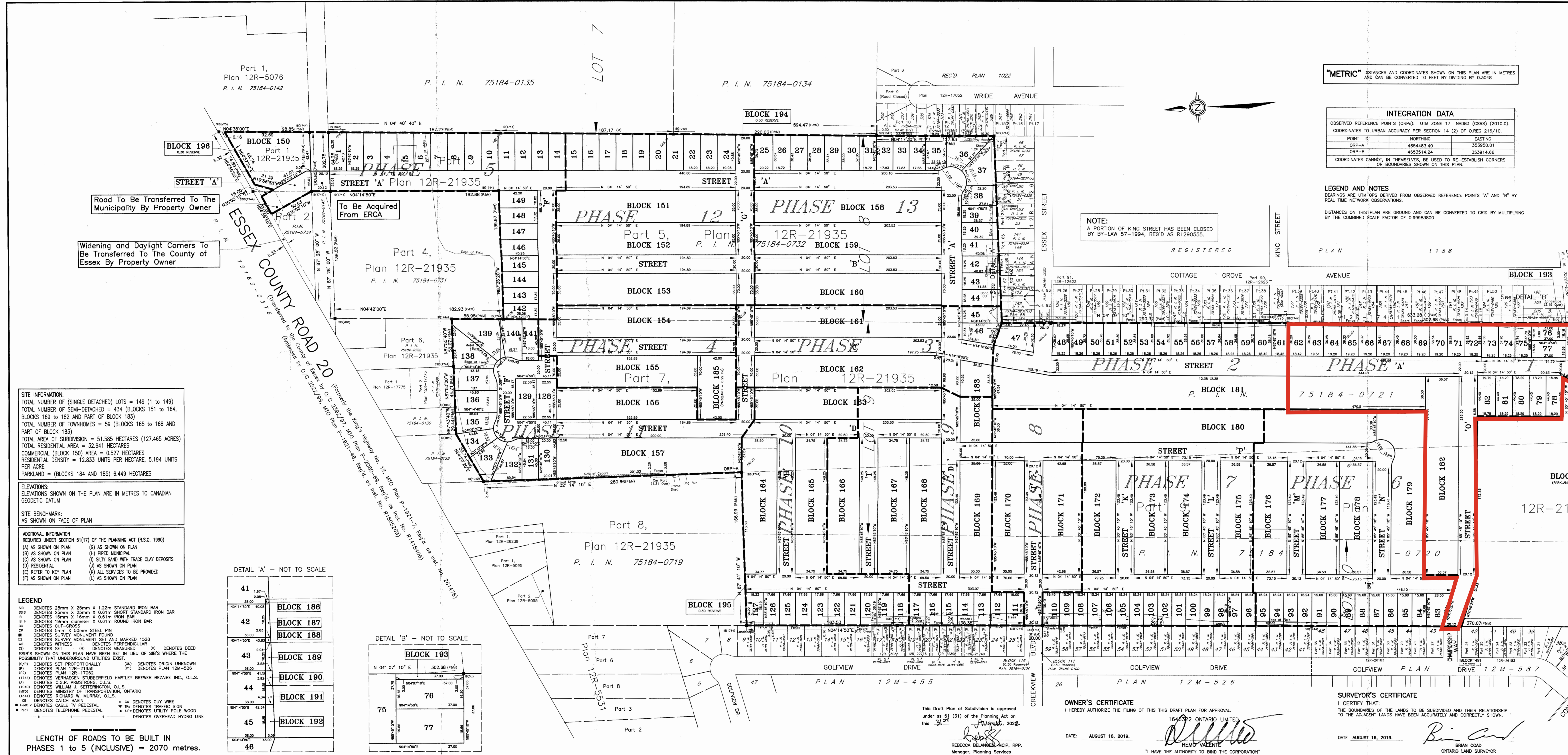
SCALE = 1:1500

"METRIC" DISTANCES AND COORDINATES SHOWN ON THIS PLAN ARE IN METRES AND CAN BE CONVERTED TO FEET BY DIVIDING BY 0.3048

INTEGRATION DATA table with columns for POINT ID, NORTHING, EASTING, and COORDINATES.

LEGEND AND NOTES: OBSERVED REFERENCE POINTS (ORP) ARE UTM GPS DERIVED FROM OBSERVED REFERENCE POINTS 'A' AND 'B' BY REAL TIME NETWORK OBSERVATIONS.

NOTE: A PORTION OF KING STREET HAS BEEN CLOSED BY BY-LAW 57-1994, REG'D AS R1290555.



SITE INFORMATION: TOTAL NUMBER OF (SINGLE DETACHED) LOTS = 149 (1 to 149). TOTAL NUMBER OF SEMI-DETACHED = 434 (BLOCKS 151 to 164, BLOCKS 169 to 182 AND PART OF BLOCK 183).

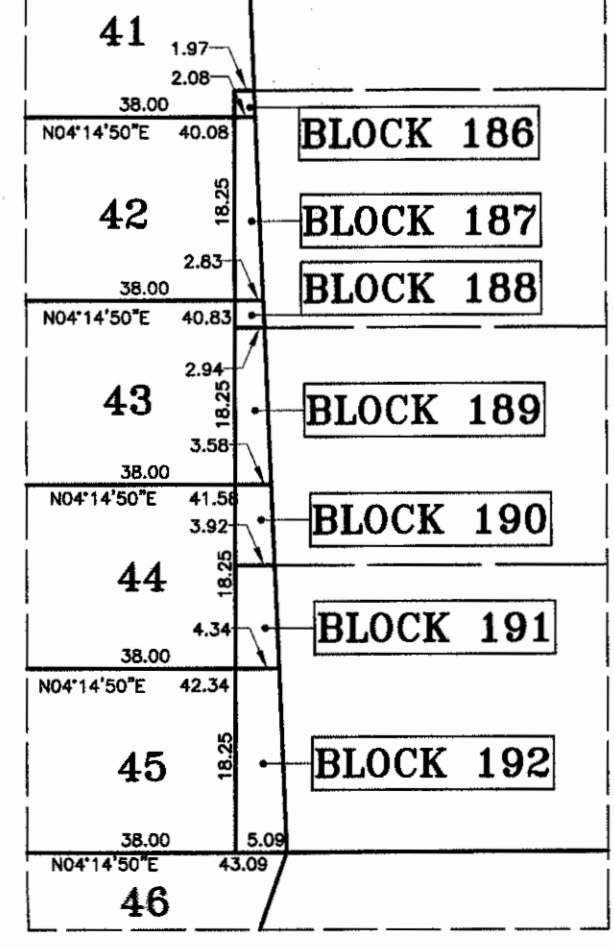
ELEVATIONS: ELEVATIONS SHOWN ON THE PLAN ARE IN METRES TO CANADIAN GEODETIC DATUM.

ADDITIONAL INFORMATION: REQUIRED UNDER SECTION 51(17) OF THE PLANNING ACT (R.S.O. 1990).

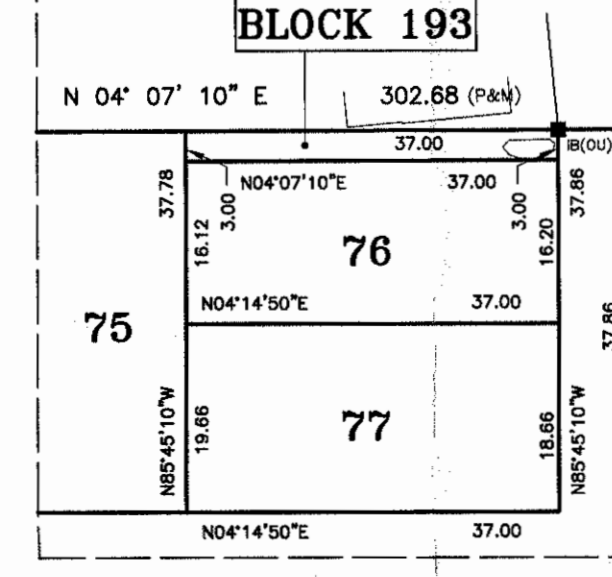
LEGEND table listing symbols for various features like iron bars, monuments, and utility poles.

LENGTH OF ROADS TO BE BUILT IN PHASES 1 to 5 (INCLUSIVE) = 2070 metres.

DETAIL 'A' - NOT TO SCALE



DETAIL 'B' - NOT TO SCALE



This Draft Plan of Subdivision is approved under s. 51 (31) of the Planning Act on this 31st day of August, 2022. REBECCA BELANDER, M.C.P., R.P.P., Manager, Planning Services, County of Essex.

OWNER'S CERTIFICATE: I HEREBY AUTHORIZE THE FILING OF THIS DRAFT PLAN FOR APPROVAL. REMO VALENTE, 164-322 ONTARIO LIMITED.

SURVEYOR'S CERTIFICATE: I CERTIFY THAT: THE BOUNDARIES OF THE LANDS TO BE SUBDIVIDED AND THEIR RELATIONSHIP TO THE ADJACENT LANDS HAVE BEEN ACCURATELY AND CORRECTLY SHOWN. BRIAN COAD, ONTARIO LAND SURVEYOR.

VERHAEGEN LAND SURVEYORS logo and contact information: 151 TALBOT ST. E., LEAMINGTON, ON, N8H 1L8. T: (519) 322-2375 F: (519) 322-2675 www.jdbarnes.com