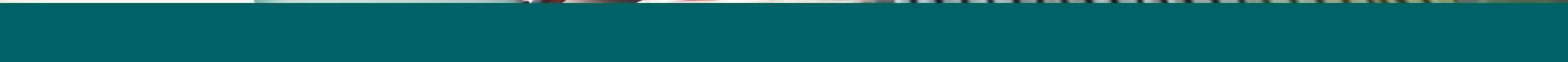




Town of Kingsville Council Presentation

December 11, 2023



Agenda



Hydro One system in Kingsville



Targeted investments to improve reliability



Outage Statistics

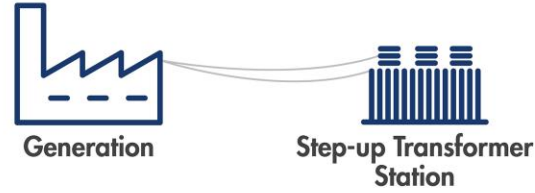


Supporting growth in the Town of Kingsville

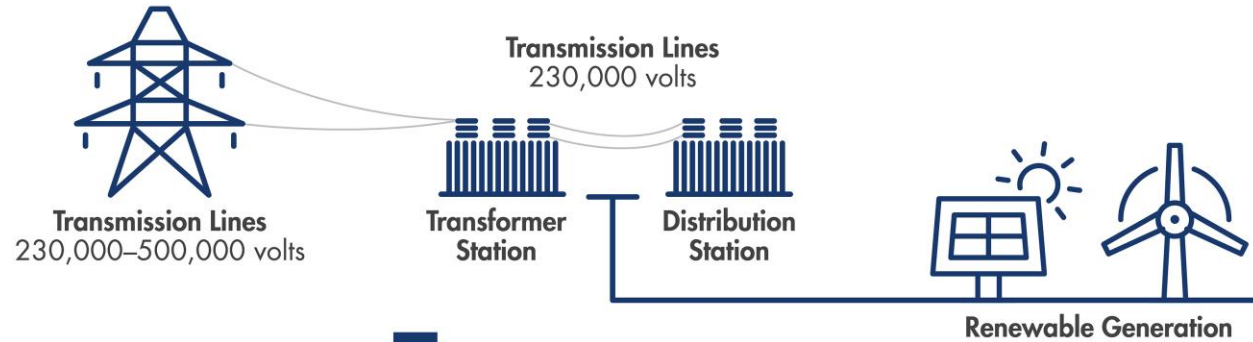


Hydro One's role in the electricity system

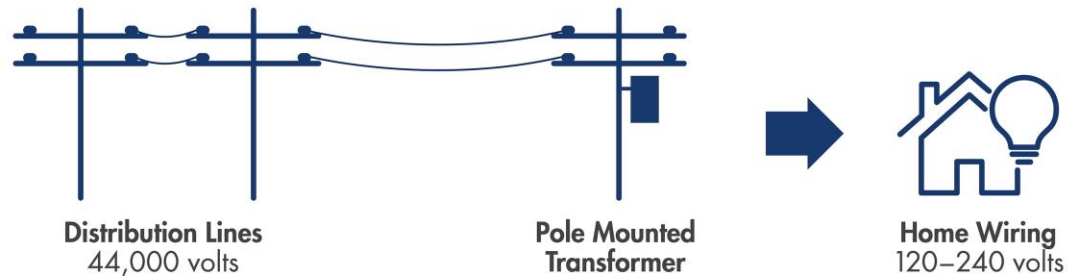
ONTARIO POWER GENERATION AND PRIVATE GENERATION COMPANIES



HYDRO ONE OR LICENSED TRANSMITTER



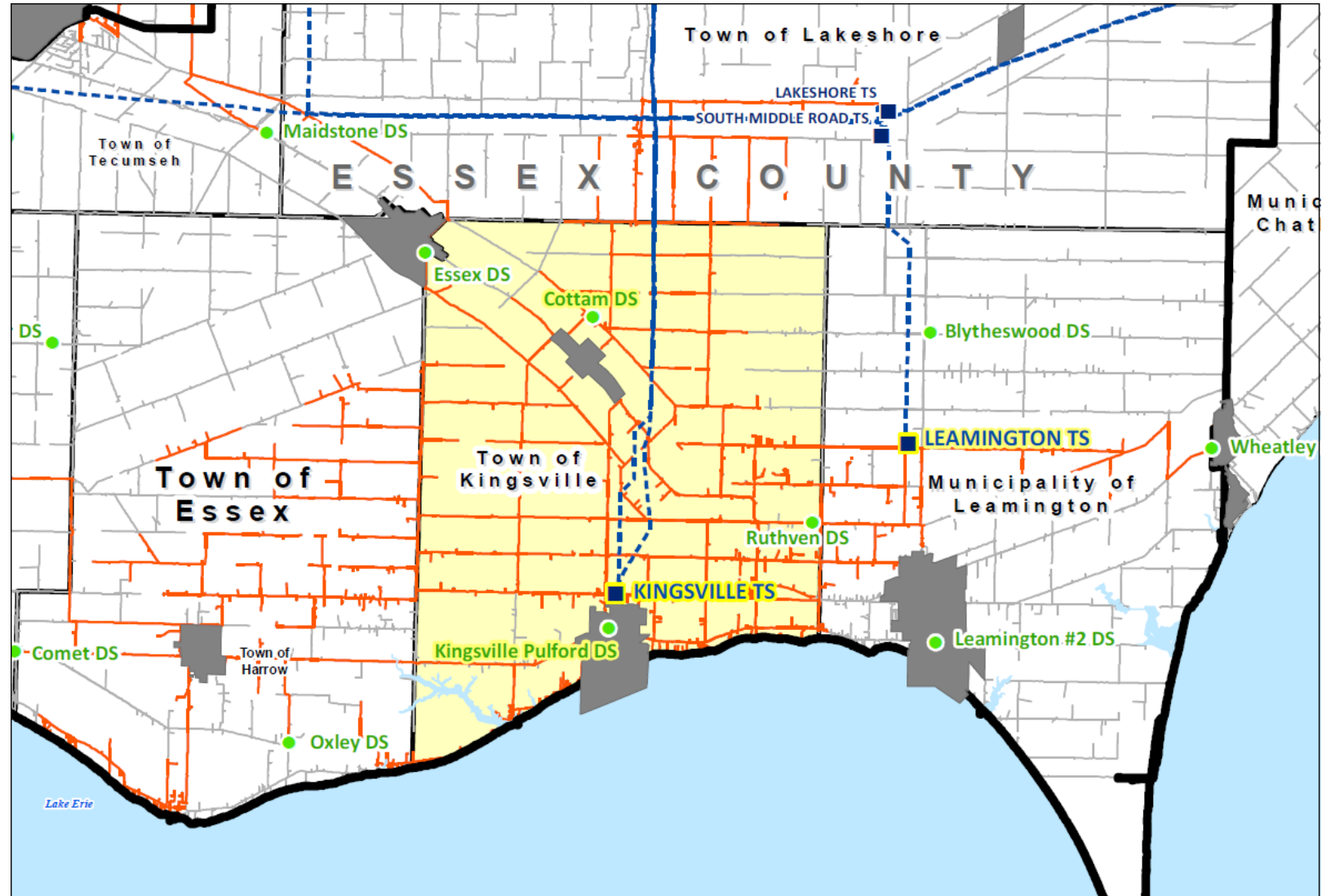
HYDRO ONE OR LOCAL DISTRIBUTION COMPANY



Town of Kingsville

Electricity Landscape:

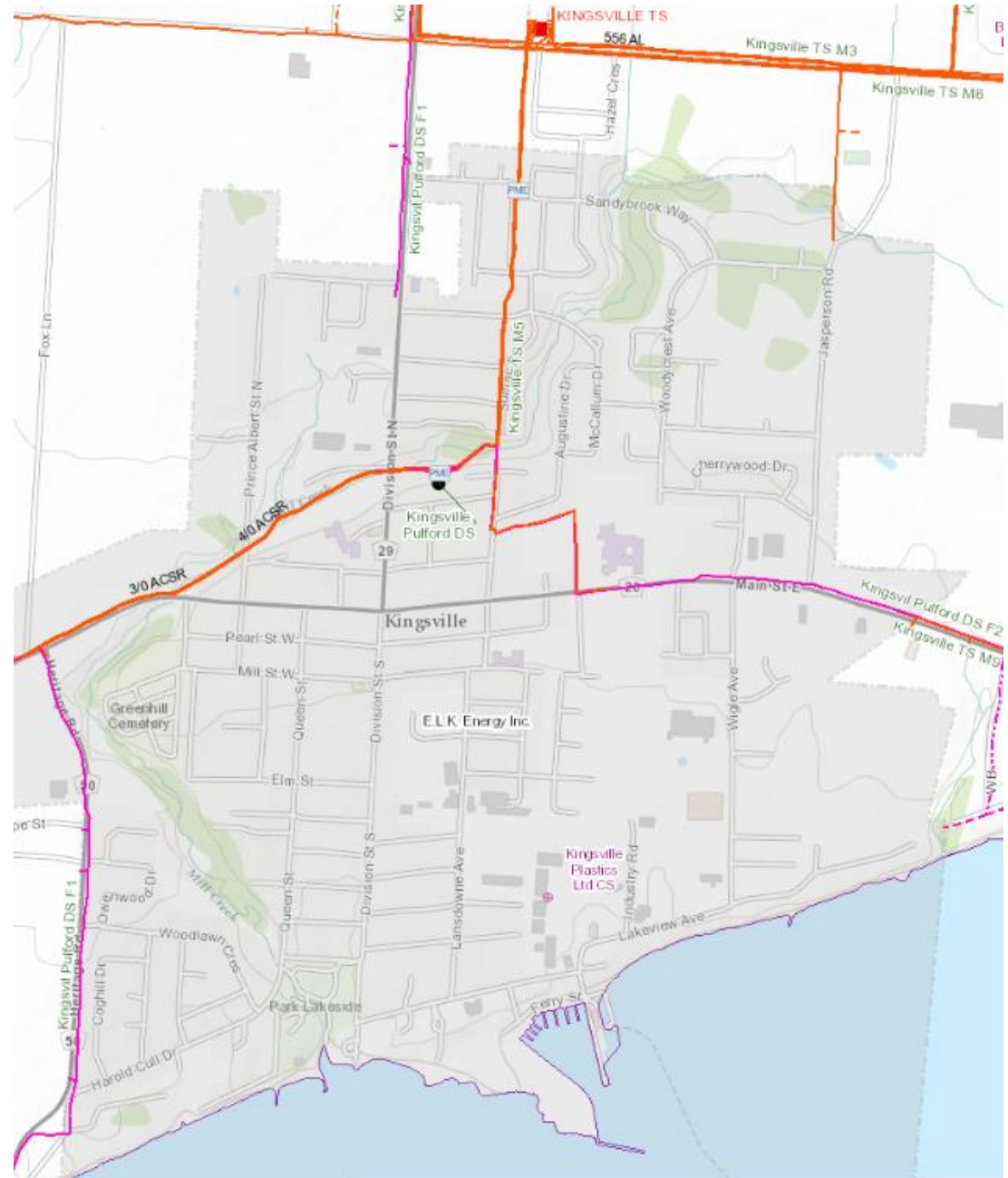
- Kingsville is served by Hydro One and E.L.K. Energy
- Feeders from Kingsville TS, Leamington TS, Kingsville Pulford DS and Cottam DS primarily service the region



E.L.K. in Kingsville

Electricity Landscape:

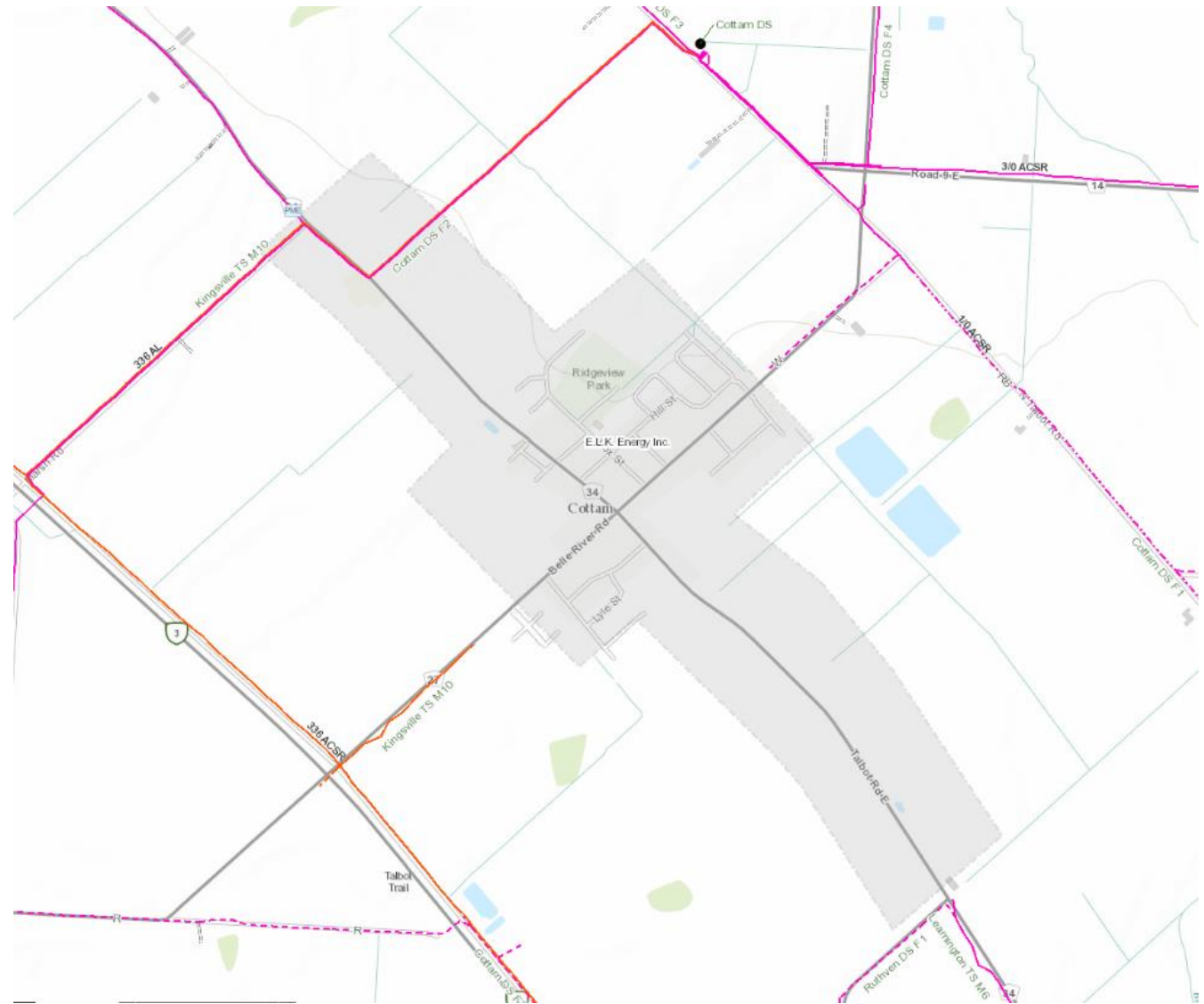
- E.L.K. is embedded on the following Hydro One Distribution feeders:
 - Kingsville TS M5
 - Kingsville Pulford DS F1
 - Kingsville Pulford DS F2



E.L.K. in Cottam

Electricity Landscape:

- E.L.K. is embedded on the following Hydro One Distribution feeders:
 - Kingsville TS M10
 - Cottam DS F2



Investments in Kingsville

What we've been doing:

- Completed Kingsville TS upgrades in 2022 with larger Transformers and Intelligent Feeder Protection
- Building new transformer stations in the area to enhance capacity in the region
 - Leamington TS #1 Completed in 2017
 - Leamington TS #2 Completed in 2020
 - South Middle Road TS #1 Completed in 2022
 - South Middle Road TS #2 Completion in 2025
- Building new distribution lines to accommodate more customer connections in the region and service anticipated load growth and improve reliability



Continued Improvement in Kingsville

What we are going to continue to do:

- Use information provided by customers and our assessments to identify system issues and needs
- Repair defective equipment identified during regular and infrared patrols
- Continue to manage vegetation on a planned cycle
- Targeted vegetation management, as needed
- Ensure adequate capacity to support growth in Kingsville

Asset Maintenance: Hydro One regularly assesses the condition of its distribution assets, plans annual maintenance, and makes repairs as needed.



Historical Sustained Outages in Region

Outage information for all Kingsville customers excluding Force Majeure

Feeder	Average Duration in hrs (# of Outages)			
	2020	2021	2022	2023
COTTAM DS F1	0.0 (0)	6.4 (3)	3.7 (1)	4.5 (2)
COTTAM DS F2	0.0 (0)	2.2 (4)	4.7 (2)	1.6 (2)
COTTAM DS F3	0.0 (0)	3.4 (1)	0.0 (0)	0.9 (1)
COTTAM DS F4	2.0 (2)	4.0 (5)	1.1 (3)	9.3 (14)
KINGSVILLE PULFORD DS F1	0.9 (4)	2.4 (1)	8.1 (1)	6.4 (7)
KINGSVILLE PULFORD DS F2	1.1 (6)	0.0 (0)	2.1 (6)	14.7 (4)
KINGSVILLE TS M10	3.4 (2)	4.7 (3)	3.0 (1)	1.0 (1)
KINGSVILLE TS M2	0.6 (1)	1.1 (3)	0.0 (0)	20.0 (1)
KINGSVILLE TS M3	0.0 (0)	0.0 (0)	3.4 (1)	2.2 (2)
KINGSVILLE TS M4	4.8 (3)	1.2 (6)	3.7 (5)	0.0 (0)
KINGSVILLE TS M5	1.2 (1)	3.6 (1)	3.4 (3)	9.1 (4)
KINGSVILLE TS M6	2.8 (2)	3.4 (1)	5.9 (2)	0.2 (1)
KINGSVILLE TS M8	1.3 (2)	0.5 (2)	0.0 (0)	0.0 (0)
KINGSVILLE TS M9	1.3 (2)	0.0 (0)	8.9 (1)	4.1 (1)
LEAMINGTON TS M26	0.0 (0)	0.0 (0)	2.5 (5)	14.5 (4)
LEAMINGTON TS M9	0.0 (0)	0.0 (0)	0.0 (0)	1.5 (1)

Force Majeure: An event, like a storm, that causes a sustained interruption to 10% or more customers.

Historical Sustained Outages in Region

Outage information for all Kingsville customers including Force Majeure

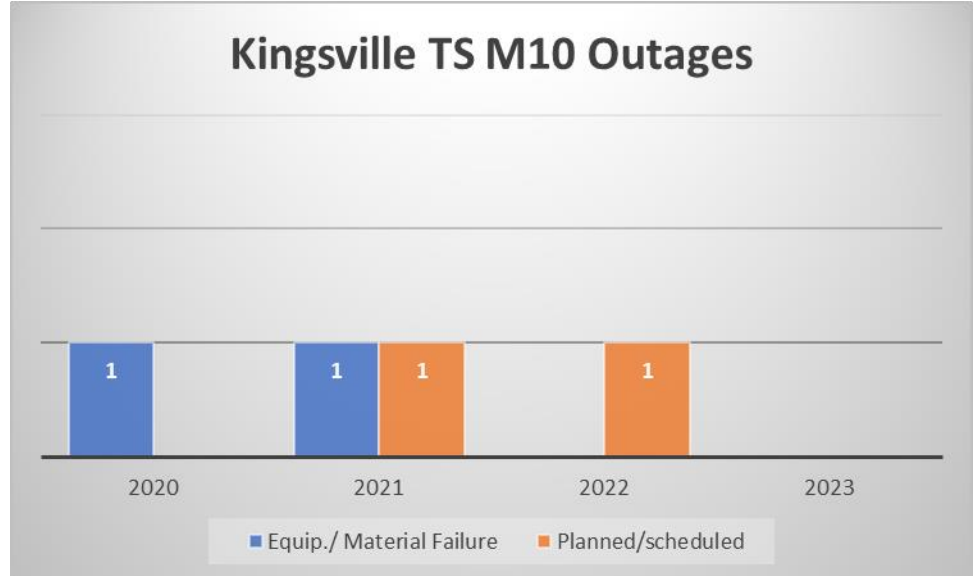
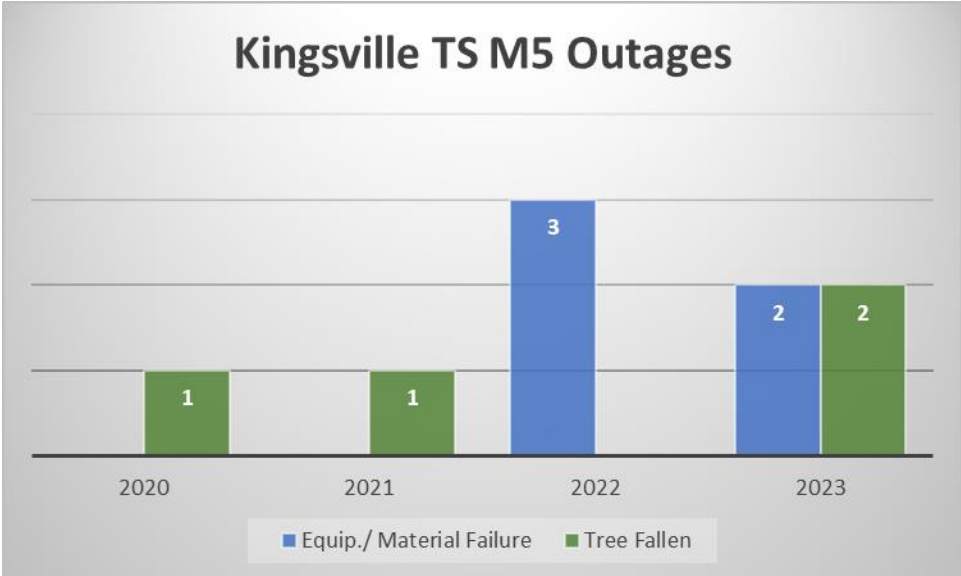
Feeder	Average Duration in hrs (# of Outages)			
	2020	2021	2022	2023
COTTAM DS F1	2.4 (1)	6.4 (3)	3.7 (1)	20.6 (4)
COTTAM DS F2	0.0 (0)	2.2 (4)	4.7 (2)	1.6 (2)
COTTAM DS F3	0.0 (0)	3.4 (1)	0.0 (0)	0.9 (1)
COTTAM DS F4	2.0 (2)	4.0 (5)	1.7 (4)	11.9 (16)
KINGSVILLE PULFORD DS F1	5.3 (5)	2.8 (2)	8.1 (1)	8.9 (8)
KINGSVILLE PULFORD DS F2	1.1 (6)	0.0 (0)	2.8 (7)	13.1 (7)
KINGSVILLE TS M10	3.4 (2)	4.7 (3)	3.0 (1)	1.0 (1)
KINGSVILLE TS M2	0.6 (1)	1.1 (3)	0.0 (0)	22.3 (2)
KINGSVILLE TS M3	2.6 (2)	0.0 (0)	3.4 (1)	2.2 (2)
KINGSVILLE TS M4	4.8 (3)	6.6 (7)	8.3 (6)	0.0 (0)
KINGSVILLE TS M5	1.2 (2)	3.6 (1)	2.2 (3)	10.7 (5)
KINGSVILLE TS M6	2.8 (4)	3.4 (1)	5.9 (2)	0.2 (1)
KINGSVILLE TS M8	1.3 (2)	0.5 (2)	0.0 (0)	0.0 (0)
KINGSVILLE TS M9	1.9 (4)	0.0 (0)	4.5 (2)	11.5 (2)
LEAMINGTON TS M26	0.0 (0)	0.0 (0)	2.5 (5)	14.5 (4)
LEAMINGTON TS M9	0.0 (0)	0.0 (0)	0.0 (0)	1.5 (1)

Force Majeure: An event, like a storm, that causes a sustained interruption to 10% or more customers.

Supply Related Outages



The diagram below captures the cause of sustained outages from January 2020 to August 2023:



Supporting growth in the Town of Kingsville

Hydro One has:

- Reviewed the data and infrastructure details to ensure that there is an adequate capacity plan for the growth areas identified
- Integrated the growth areas into Hydro One's load projections for the 2023 Windsor-Essex Regional Planning cycle

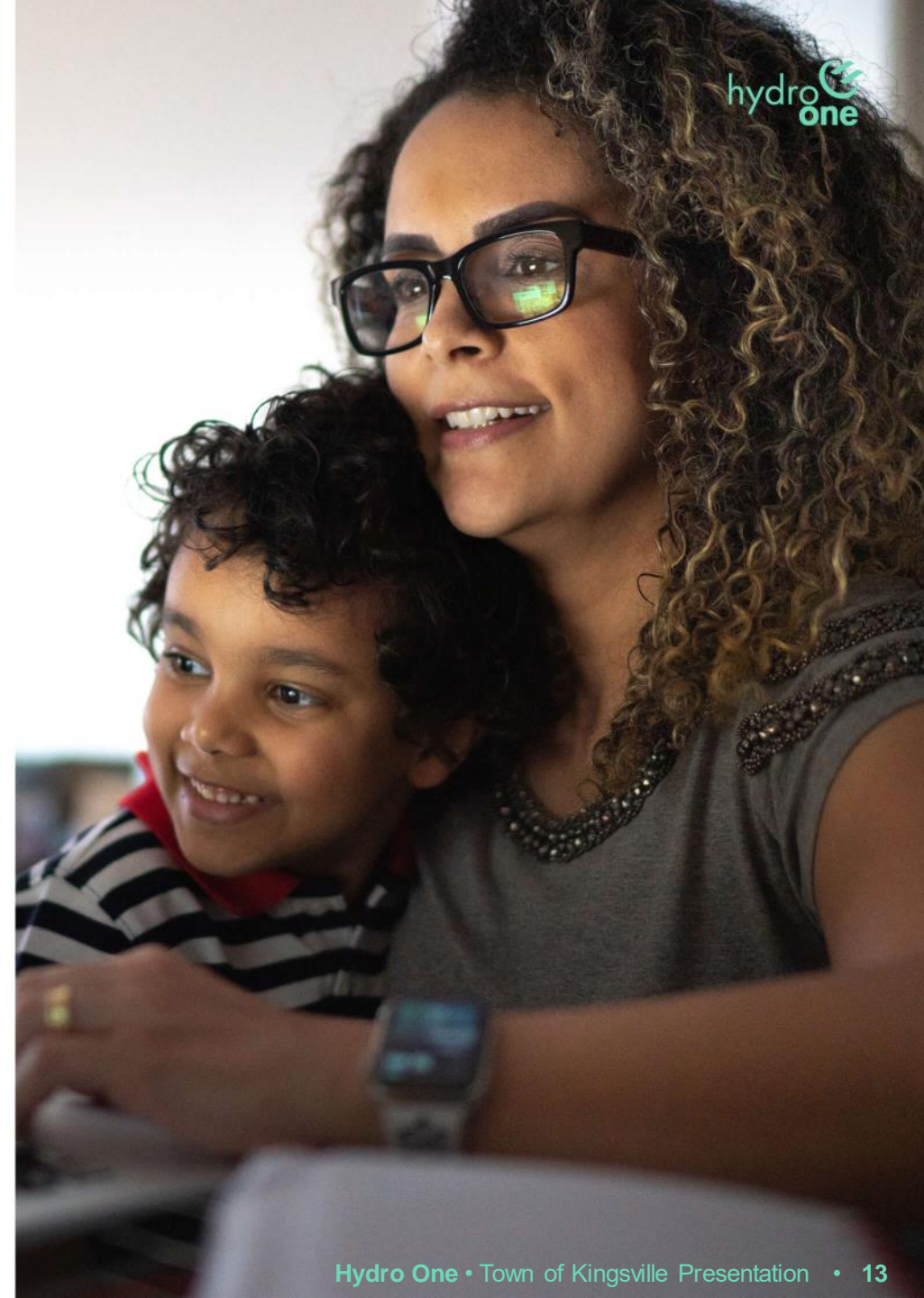
Hydro One is committed to continuing to work together to support growth in Kingsville and ensure reliable power is available for customers when they need it



We encourage customers to contact us

In the event of an outage, we encourage customers to contact Hydro One to report it

- Report online at HydroOne.com/Outages
- Call us at **1.800.434.1235** anytime day or night



Thank you
We welcome questions

