

PLAN OF SURVEY OF
PART OF LOT 273
CONCESSION NORTH OF TALBOT ROAD
GEOGRAPHIC TOWNSHIP OF GOSFIELD NORTH
TOWN OF KINGSVILLE
COUNTY OF ESSEX



SURVEYORS ON SITE INC.

THE INTENDED PLOT SIZE OF THIS PLAN IS 609mm IN WIDTH BY 1066mm IN HEIGHT WHEN PLOTTED AT A SCALE OF 1:750.

LEGEND

- MONUMENT PLANTED
- MONUMENT FOUND
- STANDARD IRON BAR
- SHORT STANDARD IRON BAR
- IRON BAR
- MEASURED
- SET
- SET BY PROPORTION
- PLAN 12R-14357
- PLAN 12R-17507
- INSTRUMENT R552042
- WILLIAM J. SETTERINTON, O.L.S.
- CLARKE SURVEYORS INC.
- VERHAEGEN, STUBBERFIELD, HARTLEY, BREWER, BEZAIRE INC.
- ORIGIN UNKNOWN

NOTES

DISTANCES AND COORDINATES SHOWN ON THIS PLAN ARE IN METRES AND CAN BE CONVERTED TO FEET BY DIVIDING BY 0.3048.

DISTANCES ON THIS PLAN ARE HORIZONTAL GROUND DISTANCES AND CAN BE CONVERTED TO GRID DISTANCES BY MULTIPLYING BY THE AVERAGE COMBINED SCALE FACTOR OF 0.999834945.

BEARINGS ARE UTM GRID DERIVED FROM NETWORK RTK GPS OBSERVATIONS (SMARTNET) ON MONUMENTS (A) AND (B) AS SHOWN HEREON, HAVING A GRID BEARING OF N41°12'40"W, NAD83 CSRS (2010.0) AND ARE REFERRED TO THE CENTRAL MERIDIAN OF UTM ZONE 17 (81° W LONGITUDE).

FOR BEARING COMPARISONS, THE FOLLOWING ROTATIONS WERE APPLIED:
P1 & P2 - 1°05'20" CLOCKWISE

SURVEYOR'S CERTIFICATE

I CERTIFY THAT:

1. THIS SURVEY AND PLAN ARE CORRECT AND IN ACCORDANCE WITH THE SURVEYS ACT, THE SURVEYORS ACT, THE LAND TITLES ACT AND THE REGULATIONS MADE UNDER THEM.

2. THE SURVEY WAS COMPLETED ON THE XXth DAY OF NOVEMBER, 2022.

DECEMBER 21, 2022

CHRISTOPHER JOHN OYLER
ONTARIO LAND SURVEYOR

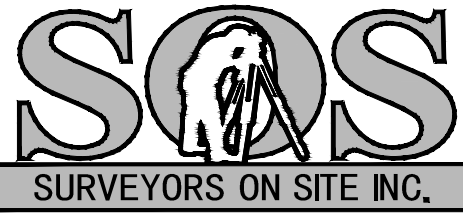
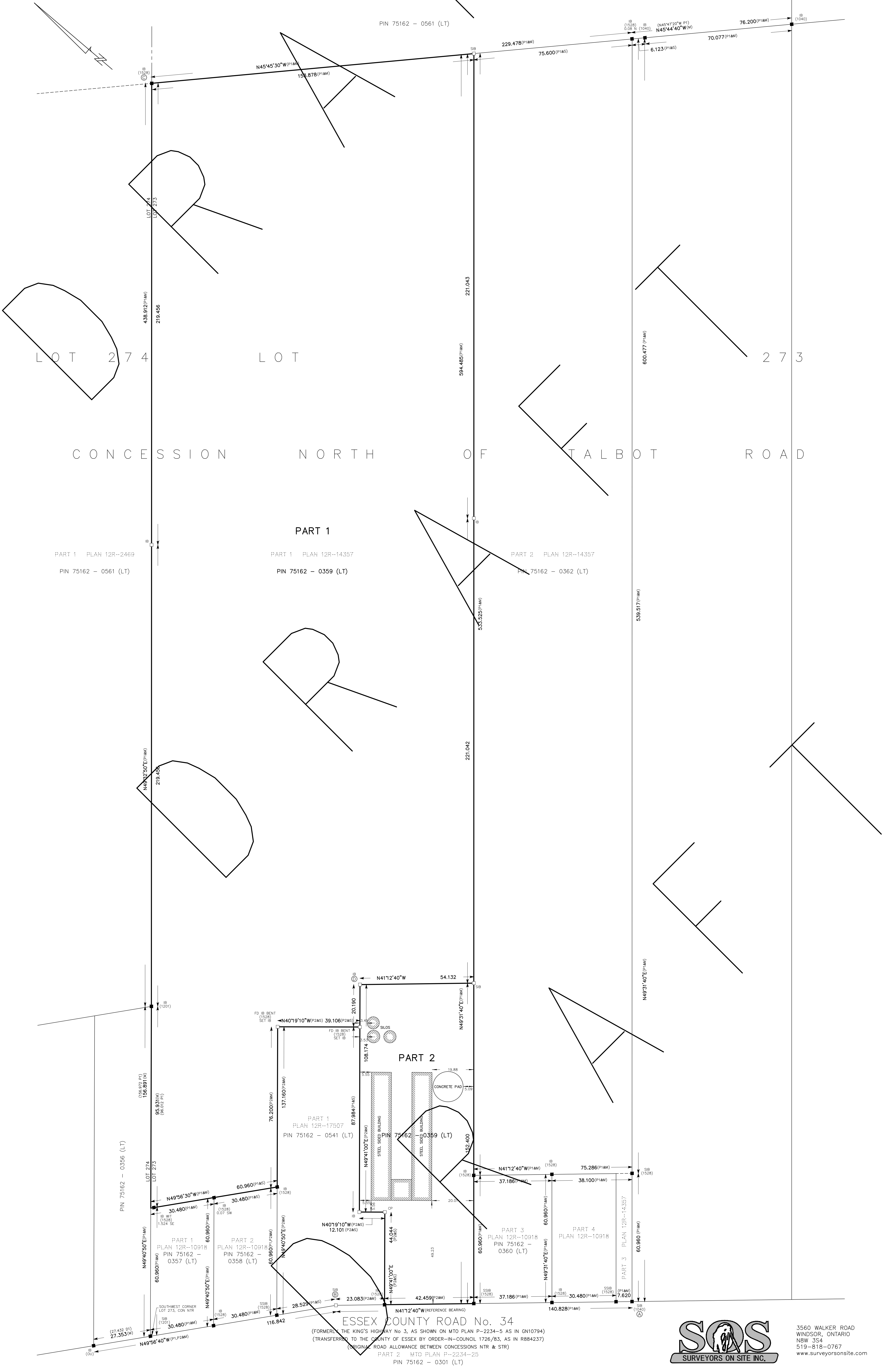
THIS PLAN OF SURVEY RELATES TO AOLS PLAN SUBMISSION FORM NUMBER V-36479.

SCHEDULE				
PART	LOT	CONCESSION	PIN	AREA (Ha)
1				7.3635
2	PART OF 273	NORTH OF TALBOT ROAD	ALL OF PIN 75162-0359 (LT)	0.7746
GEOGRAPHIC TOWNSHIP OF GOSFIELD NORTH				

PART 1 & 2 COMPRISE ALL OF PIN 75162-0359 (LT).

COORDINATES BELOW ARE DERIVED FROM NETWORK RTK GPS OBSERVATIONS (SMARTNET) AND ARE REFERRED TO UTM ZONE 17, NAD83 CSRS (2010.0).		
COORDINATES COMPLY WITH THE RURAL ABSOLUTE ACCURACY PER SEC. 14(2) OF O. REG. 216/10.		
POINT ID	NORTHING	EASTING
(A)	4667130.933	354331.149
(B)	4667236.859	354238.387
(C)	4667680.671	354623.530
(D)	4667327.162	354361.833
COORDINATES CANNOT, IN THEMSELVES, BE USED TO RE-ESTABLISH CORNERS OR BOUNDARIES SHOWN ON THIS PLAN.		

Appendix B



3560 WALKER ROAD
WINDSOR, ONTARIO
N8W 3S4
519-818-0767
www.surveyorsonsite.com