

Technical drawing of a typical Garbage Enclosure Panel. The drawing shows a cross-section of the panel, which is 2.44m (8'-0") O.C. MAX. in width and 1.83m (6'-0") in height. The panel is constructed from 25mm (1") chamfered wood top plate, 38x140mm (2x6") wood supports, and 140x140mm (6x6") wood post. The panel is secured to the post with metal hangers. The panel is supported by a 25x140mm (1x6") vertical board at 140mm (6") O.C. The panel is supported by a 2-38x140mm (2x6") wood support secured to the post with metal hangers. The panel is supported by a 25MPA (3000PSI) conc. footing, slope top of footing as shown. The panel is supported by a finished grade.


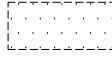


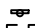
Dimensions:

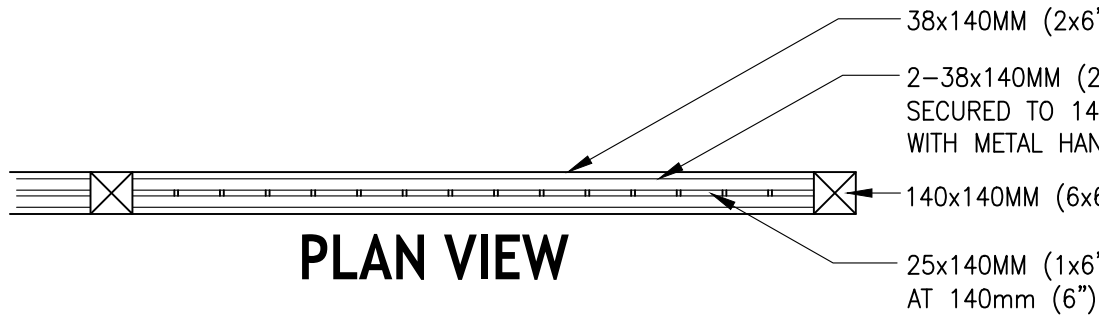
- 2.44m (8'-0") O.C. MAX.
- 1.83m (6'-0")
- 1.22m (4'-0")

Components:

- 25MM (1") CHAMFER
- 38x140MM (2x6") WOOD TOP PLATE
- 2-38x140MM (2x6") WOOD SUPPORTS SECURED TO 140x140MM (6x6") POST WITH METAL HANGERS
- 140x140MM (6x6") WOOD POST
- 25x140MM (1x6") VERTICAL BOARDS AT 140MM (6") O.C.
- 2-38x140MM (2x6") WOOD SUPPORTS SECURED TO 140x140MM (6x6") POST WITH METAL HANGERS
- FINISHED GRADE
- 25MPA (3000PSI) CONC. FOOTING, SLOPE TOP OF FOOTING AS SHOWN

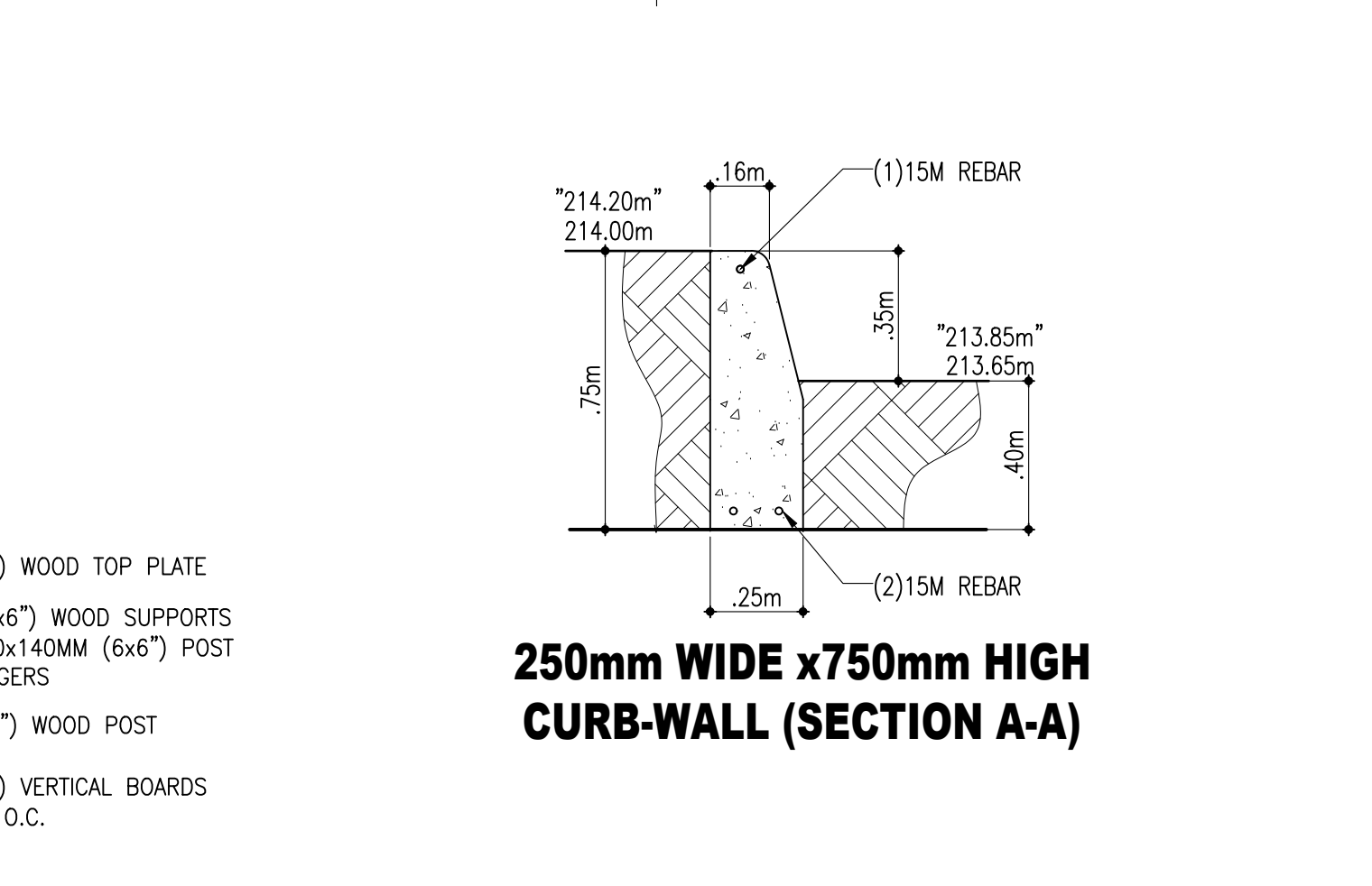
GARBAGE ENCLOSURE TYP. PANEL

LEGEND	LEGEND
 OVERHEAD DOOR	 6.0m WIDE FIRE ROUTE
 MAN DOOR	 BARRIER FREE PARKING SIGN AS PER DETAIL
 FIRE ROUTE SIGN AS PER DETAIL	



PLAN VIEW

- 38x140MM (2x6")
- 2-38x140MM (2x6") SECURED TO 140MM WITH METAL HANDRAILS
- 140x140MM (6x6")
- 25x140MM (1x6") AT 140mm (6")



REVISIONS	ISSUED FOR	DATED
	SITE PLAN APPROVAL	FEB 4/20
REVISIONS AS PER KINGSVILLE COMMENTS FEB.15/2022		MAR 9/2020
ADD WB-20 TRUCK & RETAIN. WALL DETAIL		
CONTRACTOR:		
PROJECT:		
LOT 14, 15, 16 DIMAR DRIVE SHEET TITLE:		KINGSVILLE, ON SITE PLAN
		Y.C. LIU ENGINEERING 30 MANULIFE AVE. WEST CHATHAM, ONTARIO N7L 1S2 TEL: (519) 351-0412 FAX: (519) 351-0506
DRAWN C.W. BCIN	CHECKED C.L. FIRM BCIN	FILE NO. 22-013 DATE SHEET

