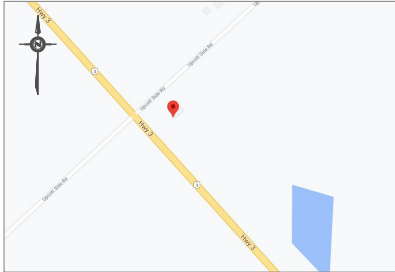


SITE DATA	EXISTING	PROPOSED
PROPERTY AREA	±18ha	
AREA LEASED		
HYDRO & FIBER OPTIC (PART 1)		82 sq.m.
COMPOUND (PART 2)		120 sq.m.
ACCESS (PART 3)		356 sq.m.
TOTAL		558 sq.m.
UNITS		1 PROPOSED STEEL SELF SUPPORT TOWER 1 PROPOSED RADIO EQUIPMENT SHELTER
HEIGHT OF TOWER		45.00m
SETBACKS		
PROPOSED STEEL SELF SUPPORT TOWER		
FRONT (UPCOTT SIDEROAD)		±47 m
SIDE (HWY No. 3)		±65 m
PROPOSED RADIO EQUIPMENT SHELTER		
FRONT (UPCOTT SIDEROAD)		±50 m
SIDE (HWY No. 3)		±67 m

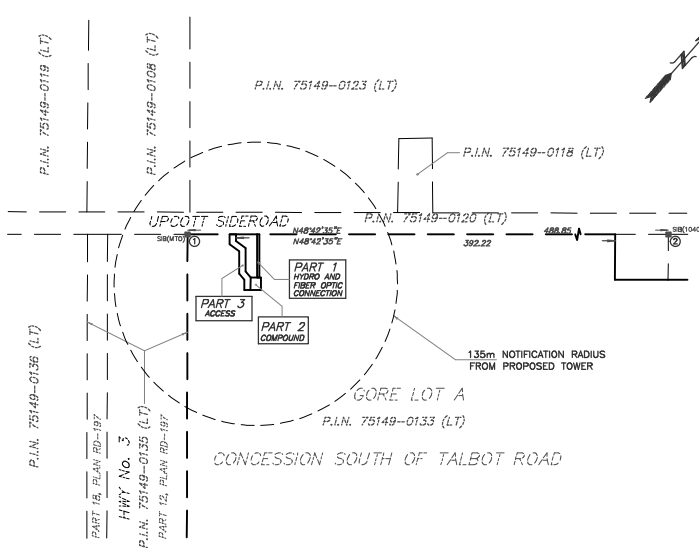
#### KEY PLAN

NOT TO SCALE



#### NOTIFICATION RADIUS PLAN

SCALE 1:2500



#### SITE PLAN

PROPOSED

TELECOMMUNICATION INSTALLATION

PART OF GORE LOT A  
CONCESSION SOUTH OF TALBOT ROAD  
TOWNSHIP OF GOSFIELD SOUTH  
COUNTY OF ESSEX

SCALE 1 : 250



ALEX MARTON LTD.  
ONTARIO LAND SURVEYORS

#### METRIC

DISTANCES AND COORDINATES SHOWN ON THIS PLAN ARE IN METRES AND CAN  
BE CONVERTED TO FEET BY DIVIDING BY 0.3048.

#### SCHEDULE

PART	PART OF LOT	CONCESSION	P.I.N.	AREA sq.m
1	GORE LOT A	STR	75149-0133 (LT)	82
2				120
3				356

#### INTEGRATION NOTE

BEARINGS SHOWN ARE GRID BEARINGS AND ARE DERIVED FROM OBSERVED REFERENCE  
POINTS (ORP'S) 1 AND 2 BY REAL TIME NETWORK OBSERVATIONS, UTM ZONE 17,  
NAD 83 (CSRS) (1987.0 EPOCH).

DISTANCES SHOWN ON THIS PLAN ARE GROUND DISTANCES AND CAN BE CONVERTED TO GRID  
DISTANCES BY MULTIPLYING BY THE COMBINED SCALE FACTOR OF 0.999982.

#### INTEGRATION DATA

OBSERVED REFERENCE POINTS (ORP'S) DERIVED FROM GPS REAL TIME NETWORK OBSERVATIONS AND ARE REFERRED TO UTM ZONE 17, NAD 83 (CSRS) (1987.0). COORDINATE VALUES ARE TO URBAN ACCURACY PER SECTION 14 (2) OF O. REG 216/10		
POINT ID	NORTHING	EASTING
ORP 1	4660331.33	358263.60
ORP 2	4660653.91	358630.91
COORDINATES CANNOT, IN THEMSELVES, BE USED TO RE-ESTABLISH CORNERS OR BOUNDARIES SHOWN ON THIS PLAN.		

#### ELEVATION NOTE

ELEVATIONS SHOWN HEREON ARE GEODETIC  
AND ARE DERIVED FROM GPS OBSERVATIONS  
USING REAL TIME NETWORK OBSERVATIONS.

#### SURVEYOR'S CERTIFICATE

I CERTIFY THAT:

1. THE SURVEY WAS COMPLETED ON THE 23TH DAY OF DECEMBER, 2020.

JANUARY 15, 2021  
DATE

A. MARTON  
ONTARIO LAND SURVEYOR

AMENDMENTS		
No.	DESCRIPTION	DATE
1	INFORMATION ADDED	30.08.2021
2	TOWER'S POSITION CHANGED	28.10.2021

	LATITUDE	N42°04'56.5"
	LONGITUDE	W82°42'45.6"
	ELEVATION	198.0

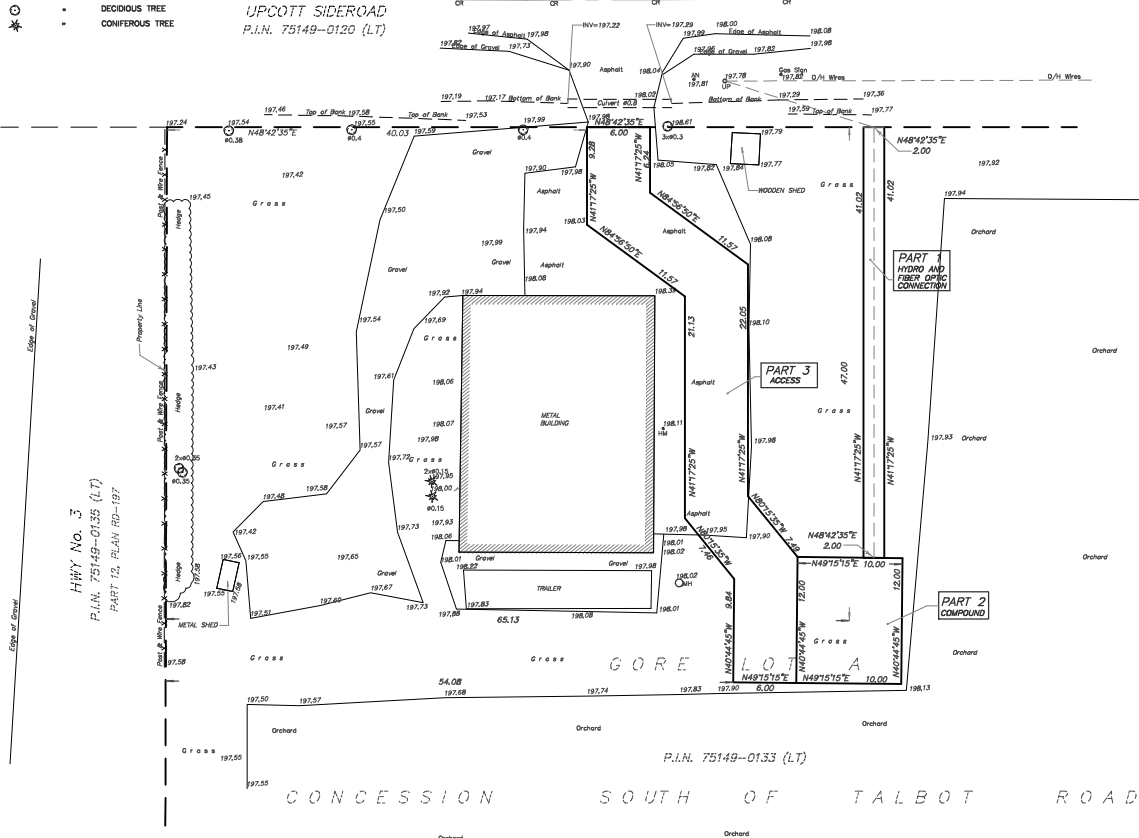
SITE: ON7985

ALEX MARTON LIMITED ONTARIO LAND SURVEYORS	
180 APPLEWOOD CRESCENT, UNIT 8, CONCORD, ONTARIO, L4K 4H8 PHONE: 905-878-8888 FAX: 905-878-8770 E-MAIL: alex@amsurveying.ca WEBSITE: www.amsurveying.ca	
PARTY CHIEF: J. H.Z.	FILE NAME: 2020-353(ON7985).DWG
DRAWN: F.V.W.	PLOT SCALE: 1:250
CHECKED: A.M.	PROJECT No. 2020-353

#### LEGEND

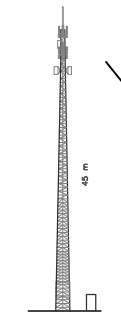
SYMBOL	DENOTES	SURVEY MONUMENT FOUND
SUB	•	STANDARD IRON BAR
MTD	•	MINISTRY OF TRANSPORTATION
1040	•	W.J. SETTERINGTON LTD., O.L.S.
N.S.E.W	•	NORTH, SOUTH, EAST, WEST
PIN	•	PROPERTY IDENTIFIER NUMBER
UP	•	UTILITY POLE
CR	•	CENTERLINE
O/H	•	OVERHEAD
AN	•	ANCHOR
MH	•	MANHOLE
HU	•	HYDRO METER
INV	•	INVERT
Ø	•	DIAMETER
293.05	•	ELEVATION ON THE GROUND
□	•	EXISTING GRAVEL DRIVEWAY
○	•	DECIDUOUS TREE
★	•	CONIFEROUS TREE

UPCOTT SIDEROAD  
P.I.N. 75149-0120 (LT)



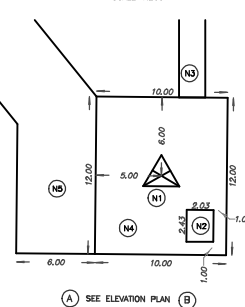
#### ELEVATION PLAN

NOT TO SCALE



#### PROPOSED COMPOUND LAYOUT PLAN

SCALE 1:200



#### NOTES

- PROPOSED STEEL SELF SUPPORT TOWER.  
PAINT COLOUR SUBJECT TO NAV CANADA REQUIREMENTS.  
ANTENNA NUMBER AND LOCATIONS TO BE DETERMINED.  
FOUNDATION DESIGN PENDING SOIL REPORT.
- PROPOSED RADIO EQUIPMENT SHELTER ON  
REINFORCED CONCRETE SLAB.
- HYDRO CONNECTION AND ROUTING TO BE DETERMINED BY  
QUALIFIED PERSONNEL IN CONSULTATION WITH LOCAL AUTHORITY.
- REMOVE EXISTING TOPSOIL, PROOF ROLL SUBGRADE AND PLACE  
300 mm GRANULAR A ACROSS COMPOUND AREA. FINISHED GRAVEL  
SURFACE TO BE MINIMUM 150 mm ABOVE EXISTING GRADE AND  
SLOPED AWAY FROM PROPOSED STRUCTURES AT  
MIN. 1% ON ALL SIDES TO PROVIDE ADEQUATE DRAINAGE.
- PROPOSED GRAVEL ACCESS WAY.