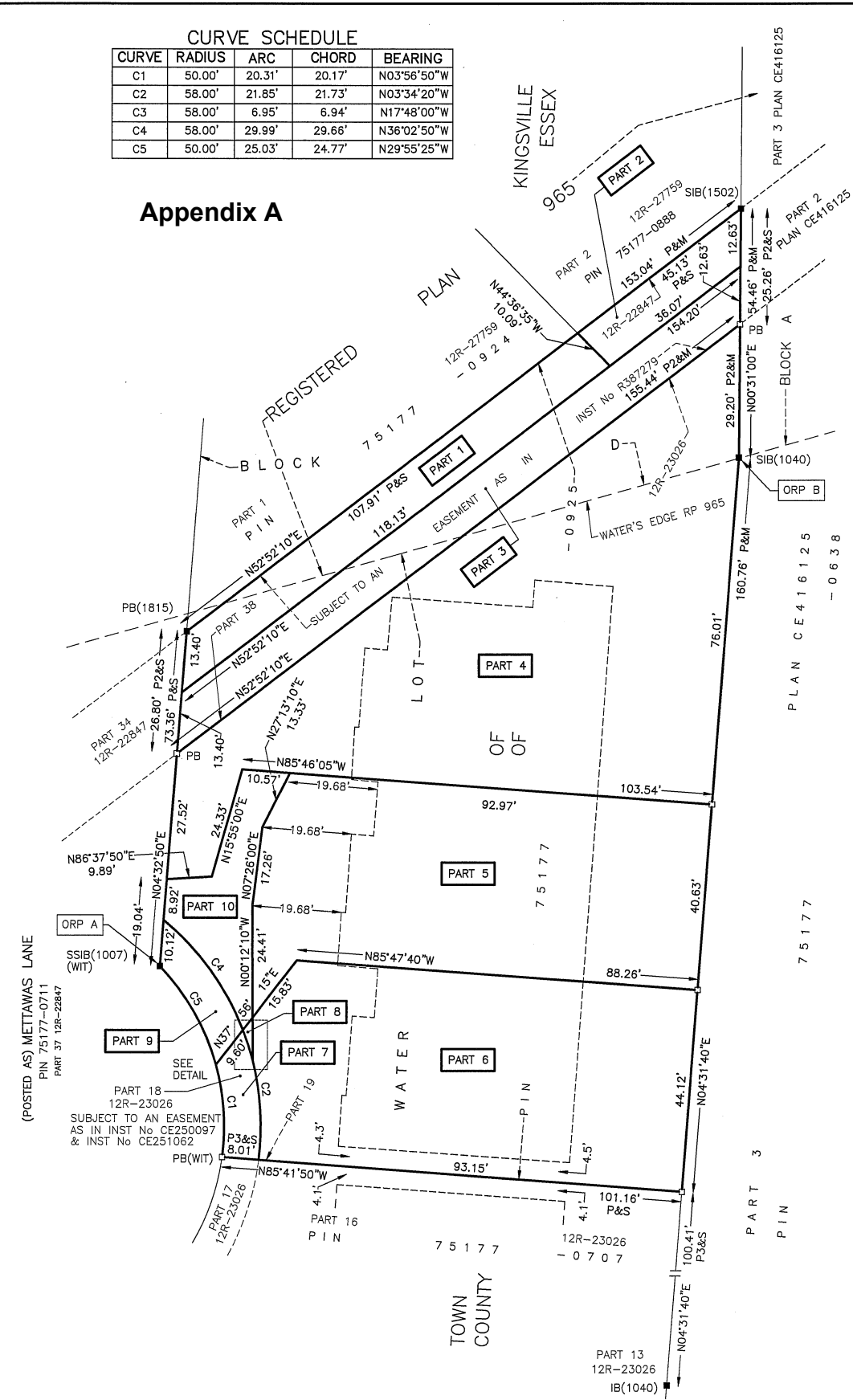


CURVE	RADIUS	ARC	CHORD	BEARING
C1	50.00'	20.31'	20.17'	N03°56'50"W
C2	58.00'	21.85'	21.73'	N03°34'20"W
C3	58.00'	6.95'	6.94'	N17°48'00"W
C4	58.00'	29.99'	29.66'	N36°02'50"W
C5	50.00'	25.03'	24.77'	N29°55'25"W

Appendix A



PART	LOT	PLAN	PIN
1	PART OF BLOCK D & PART OF THE WATER LOT IN FRONT OF LOT 1, CONCESSION 1, ED	965	PART OF 75177-0925
2	PART OF BLOCK D		PART OF 75177-0925
3	PART OF BLOCK D & PART OF THE WATER LOT IN FRONT OF LOT 1, CONCESSION 1, ED		PART OF 75177-0925
4	PART OF THE WATER LOT IN FRONT OF LOT 1, CONCESSION 1, ED		PART OF 75177-0925
5			PART OF 75177-0925
6			PART OF 75177-0925
7			PART OF 75177-0925
8	PART OF THE WATER LOT IN FRONT OF LOT 1, CONCESSION 1, ED		PART OF 75177-0925
9			PART OF 75177-0925
10			PART OF 75177-0925

PARTS 1, 2 & 3 ARE SUBJECT TO AN EASEMENT AS IN INST No R387279
 PARTS 7 & 9 ARE SUBJECT TO AN EASEMENT AS IN INST No CE250097 & INST No CE251062
 THIS PLAN COMPRISES ALL OF PIN 75177-0925

PLAN OF SURVEY OF PART OF BLOCK D REGISTERED PLAN 965 & PART OF WATER LOT IN FRONT OF LOT 1, CONCESSION 1 EASTERN DIVISION GEOGRAPHIC TOWNSHIP OF GOSFIELD SOUTH TOWN OF KINGVILLE COUNTY OF ESSEX

SURVEYOR'S CERTIFICATE

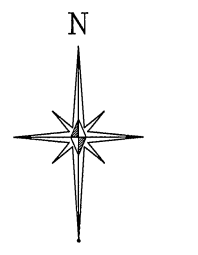
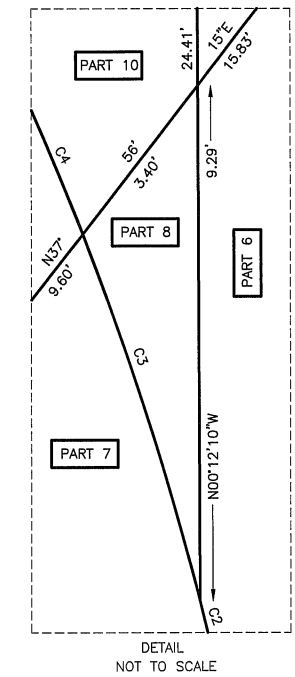
I CERTIFY THAT:
 1. THIS SURVEY AND PLAN ARE CORRECT AND IN ACCORDANCE WITH THE SURVEYS ACT, THE SURVEYORS ACT, THE LAND TITLES ACT, AND THE REGULATIONS MADE UNDER THEM.
 2. THE SURVEY WAS COMPLETED ON THE 2nd DAY OF SEPTEMBER, 2021.
 (DATE) S.D. HOOK
 ONTARIO LAND SURVEYOR

NOTES

BEARINGS ARE UTM GRID, DERIVED FROM OBSERVED REFERENCE POINTS A AND B, BY REAL TIME NETWORK (RTN) OBSERVATIONS, UTM ZONE 17, NAD83 (CSRS) (2010) TOPNET.
 DISTANCES ARE GROUND AND CAN BE CONVERTED TO GRID BY MULTIPLYING BY THE COMBINED SCALE FACTOR OF 0.99982592.
 OBSERVED REFERENCE POINTS (ORP) A & B: UTM, ZONE 17, NAD83 (CSRS) (2010).
 COORDINATES TO RURAL ACCURACY PER SEC. 14 (2) OF O. REG. 216/10.

POINT ID	NORTHING	EASTING
ORP A	15269631.51	1168520.23
ORP B	15269742.73	1168647.54

COORDINATES CANNOT, IN THEMSELVES, BE USED TO RE-ESTABLISH CORNERS OR BOUNDARIES SHOWN ON THIS PLAN.



SCALE: 1"=20'
 25ft 0ft 25ft

THE INTENDED PLOT SIZE OF THIS PLAN IS 22" IN WIDTH BY 17" IN HEIGHT WHEN PLOTTED AT A SCALE OF 1"=20'

DISTANCES AND COORDINATES SHOWN ON THIS PLAN ARE IN FEET AND CAN BE CONVERTED TO METRES BY MULTIPLYING BY 0.3048.

DRAWN BY: C.A.
 CHECKED BY: S.D.H. / C.A.
 PLAN NUMBER: 21249

HOOK & TODGHAM SURVEYING INCORPORATED
 CHATHAM ONTARIO
 PHONE: 1-519-354-6122 FAX: 1-519-354-6129