

FILENAME: C:\P\WORKING DIRECTORY\PROJECTS TO 2017\3715\074101\081232-02-MCP-CON-06G PLOTTED BY: STRLING, DILLON CONSULTING LIMITED, 10 FIFTH STREET SOUTH, CHATHAM, ONTARIO, N7M 4M4, PHONE (519) 354-7802, FAX (519) 354-2060
PLOT DATE: 2021-03-10 @ 10:36:33 AM PLOT SCALE: 1:25.4 PLOT STYLE: DILLON-STANDARD.CTB



Appendix A

EXISTING GREENHOUSE

WALLACE-FOX DRAIN

STRAW BALE FLOW
CHECK DAM AS
PER OPSPD 219.180

EXISTING DITCH TO BE
STRIPPED PRIOR TO
FILL PLACEMENT (TYP.)

EXISTING DITCH TO BE
STRIPPED PRIOR TO
FILL PLACEMENT (TYP.)

STRAW BALE FLOW
CHECK DAM AS
PER OPSPD 219.180

KING'S HIGHWAY No. 3

STRAW BALE FLOW
CHECK DAM AS
PER OPSPD 219.180

EXISTING DITCH WILL BE REMOVED
BY POND CONSTRUCTED

LIGHT DUTY SILT FENCING
AS PER OPSPD 219.110

SHED TO BE
REMOVED

REMOVE TREES
AS REQUIRED

REMOVE
EXISTING
SEPTIC BED

MUD MATS AT SITE
ENTRANCE/EXIT

MUD MATS AT SITE
ENTRANCE/EXIT

REMOVE
EXISTING
SEPTIC BED

GRAHAM SIDEROAD

GENERAL NOTES:

1. THE OWNER AND DILLON CONSULTING LIMITED DO NOT GUARANTEE THE ACCURACY OF THE UTILITIES SHOWN ON THE DRAWINGS. OTHER UTILITIES MAY BE PRESENT OR THE UTILITIES SHOWN MAY DIFFER IN SIZE OR LOCATION FROM THOSE SHOWN. THE CONTRACTOR SHALL NOTE THAT SERVICES FROM THE MAIN LINES ARE NOT SHOWN. THE CONTRACTOR ASSUMES FULL RESPONSIBILITY TO CONTACT THE VARIOUS UTILITY COMPANIES AND TO REPAIR ANY DAMAGE IT MAY CAUSE TO THESE UTILITIES OR TO OTHER THIRD PARTIES. THE CONTRACTOR AGREES TO INDEMNIFY THE OWNER AND DILLON CONSULTING LIMITED AGAINST ANY CLAIMS WHICH MAY ARISE FROM THE CONTRACTOR'S ACTIONS.

GENERAL CONSTRUCTION MEASURES:

1. ALL EROSION AND SEDIMENT CONTROL MEASURES ARE TO BE INSTALLED TO THE SATISFACTION OF THE ENGINEER, THE MUNICIPALITY AND THE CONSERVATION AUTHORITY PRIOR TO UNDERTAKING ANY SITE ALTERATIONS (FILLING, GRADING, REMOVAL OF VEGETATION, ETC.) AND REMAIN PRESENT DURING ALL PHASES OF SITE PREPARATION AND CONSTRUCTION.
2. A QUALIFIED INSPECTOR SHOULD CONDUCT DAILY VISITS DURING CONSTRUCTION TO ENSURE THAT THE CONTRACTOR IS WORKING IN ACCORDANCE WITH THE DESIGN DRAWINGS AND THAT MITIGATION MEASURES ARE BEING IMPLEMENTED AS SPECIFIED.
3. LIGHT DUTY SILT FENCE BARRIERS ARE TO BE INSTALLED TO PREVENT SEDIMENT FROM LEAVING THE WORK AREAS ACCORDING TO OPSS 1860.
4. STRAW BALE BARRIERS ARE TO BE INSTALLED WHERE NECESSARY IN DRAINAGE DITCHES THAT WILL REMAIN OPEN.
5. ROCK FLOW CHECK DAMS ARE TO BE INSTALLED AT THE OUTLETS TO ROADSIDE DITCHES AND WOVEN WITH CLASS II GEOTEXTILE ACCORDING TO OPSS 1860. THE ROCKS USED SHALL BE ACCORDING TO OPSS 1004 REQUIREMENTS FOR RIP-RAP AND GABION STONE.
6. DURING CONSTRUCTION, THE EXISTING HIGHWAY DITCH IS TO BE KEPT CLEAN. PROVISIONS MUST BE IN PLACE TO REMOVE ANY SEDIMENT THAT ENTERS THE HIGHWAY DRAINAGE SYSTEM AS A RESULT OF CONSTRUCTION OF THE SITE.
7. AFTER COMPLETE BUILD-OUT, ALL SEWERS ARE TO BE INSPECTED AND CLEANED AND ALL SEDIMENT AND CONSTRUCTION FENCING IS TO BE REMOVED.
8. THE CONTRACTOR SHALL IMMEDIATELY REPORT TO THE ENGINEER OR INSPECTOR ANY ACCIDENTAL DISCHARGES OF SEDIMENT MATERIAL INTO ANY DITCH OR SEWER SYSTEM. APPROPRIATE RESPONSE MEASURES SHALL BE CARRIED OUT BY THE CONTRACTOR WITHOUT DELAY.
9. THE CONTRACTOR ACKNOWLEDGES THAT FAILURE TO IMPLEMENT EROSION AND SEDIMENT CONTROL MEASURES MAY RESULT IN PENALTIES IMPOSED BY ANY APPLICABLE REGULATORY AGENCY.

LEGEND:

- DITCH REMOVAL
- MUD MATS
- STRAW BALE FLOW CHECK DAM

Conditions of Use

Verify elevations and/or dimensions on drawing prior to use.
Report any discrepancies to Dillon Consulting Limited.

Do not scale dimensions from drawing.

Do not modify drawing, re-use it, or use it for purposes other than those intended at the time of its preparation without prior written permission from Dillon Consulting Limited.



DESIGN	NB	REVIEWED BY	RM
DRAWN	TKS	CHECKED BY	
DATE	March 10, 2021		
SCALE	1:2000 (11x17) 1:1000 (22x34)		
1	REVIEW	14 JAN 21	RM
NO.	ISSUED FOR		DATE BY

JC Fresh Farms Greenhouse Expansion Phase 2B

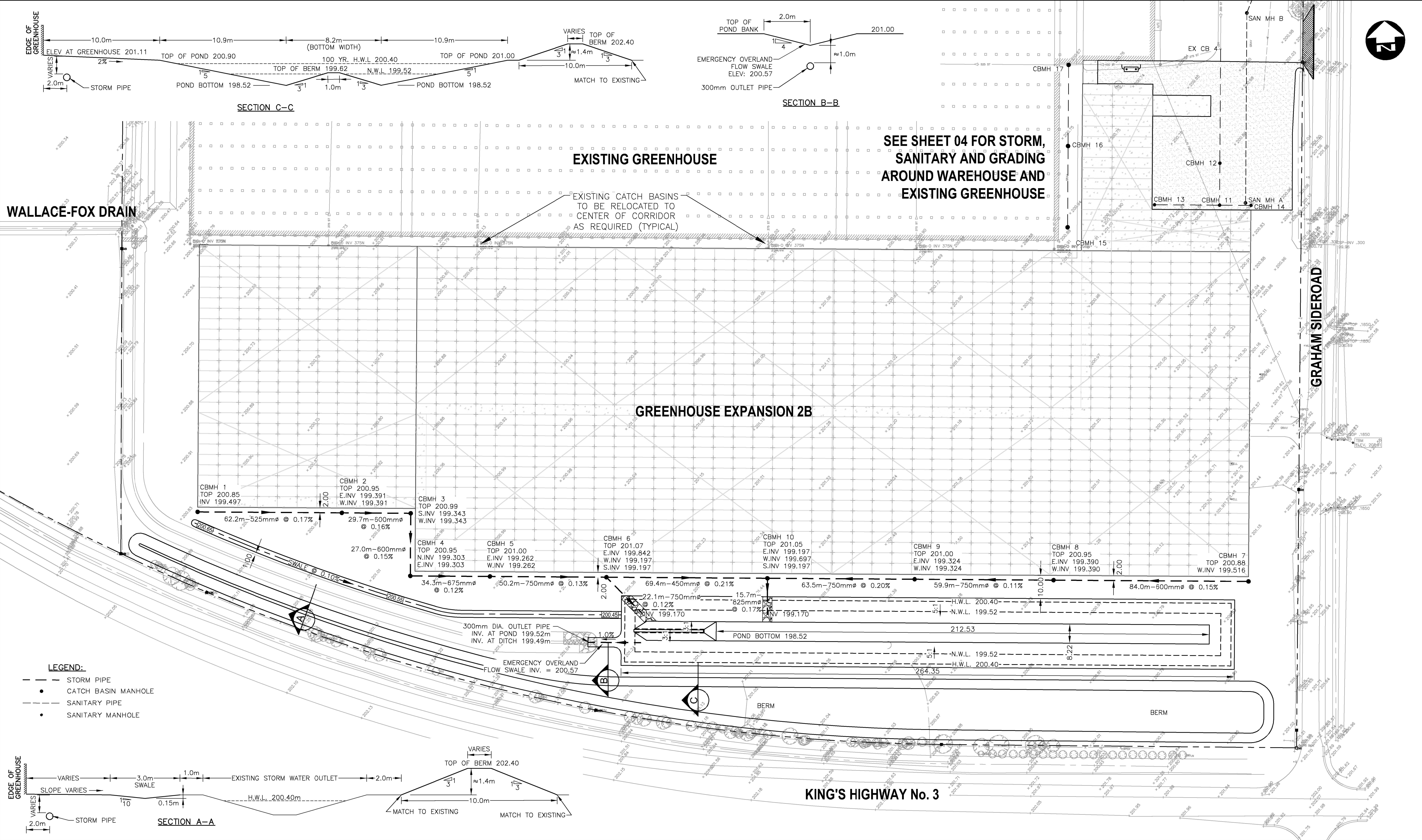
REMOVALS AND EROSION
SEDIMENT CONTROL PLAN

PROJECT NO.
081232-5000

SHEET NO.

01

FILENAME: C:\P\WORKING DIRECTORY\PROJECTS TO 2017\3\TWS\0741019\081232-02-MCP-CON-000.PLOT DATE: 2021-03-10 10:36:45 AM PLOT SCALE: 1:250 4:45 AM PLOT STYLE: DILLON-STANDARD.CTB PLOTTED BY: STRILING, DILLON CONSULTING LIMITED, 10 FIFTH STREET SOUTH, CHATHAM, ONTARIO, N7M 4M4, PHONE (519) 354-7802, FAX (519) 354-2050

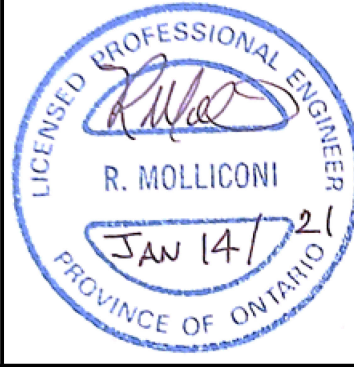


Conditions of Use

Verify elevations and/or dimensions on drawing prior to use.
Report any discrepancies to Dillon Consulting Limited.

Do not scale dimensions from drawing.

Do not modify drawing, re-use it, or use it for purposes other than those intended at the time of its preparation without prior written permission from Dillon Consulting Limited.



DESIGN	NB	REVIEWED BY	RM
DRAWN	TKS	CHECKED BY	
DATE	March 10, 2021		
SCALE	1:1500 (11x17) 1:750 (22x34)		
1	REVIEW	14 JAN 21	RM
No.	ISSUED FOR	DATE	BY
PROJECT NO. 081232-5000			
SHEET NO. 02			
JC Fresh Farms Greenhouse Expansion Phase 2B			
STORM WATER MANAGEMENT PLAN			

PLANNING: C:\PW\WORKING\DIRECTOR\PROJECTS TO 2017\3375\0074\0108\1232-02-MCP-CON-DWG PLOTTED BY: STIRLING, DILLON CONSULTING LIMITED, 10 FIFTH STREET SOUTH, CHATHAM, ONTARIO, M7M 4M4, PHONE (519) 354-7802, FAX (519) 354-2050
PLOT DATE: 2021-03-10 @ 10:36:59 AM PLOT SCALE: 1:25.4 PLOT STYLE: DILLON-STANDARD.CTB

WALLACE-FOX DRAIN

EXISTING GREENHOUSE

GREENHOUSE EXPANSION 2B

SEE SHEET 04 FOR STORM,
SANITARY AND GRADING
AROUND WAREHOUSE AND
EXISTING GREENHOUSE

CAUTION: FIBER LINE
MAY REQUIRE LOWERING
OR RELOCATED

GRAHAM SIDEROAD

KING'S HIGHWAY No. 3

LEGEND:

- NEW GRANULAR
400mm GRAN 'A'
- NEW ASPHALT
40mm HL3 (SURFACE)
60mm HL8 (BASE)



Conditions of Use

Verify elevations and/or dimensions on drawing prior to use.
Report any discrepancies to Dillon Consulting Limited.

Do not scale dimensions from drawing.

Do not modify drawing, re-use it, or use it for purposes other
than those intended at the time of its preparation without prior
written permission from Dillon Consulting Limited.

DESIGN	NB	REVIEWED BY	RM
DRAWN	TKS	CHECKED BY	
DATE	March 10, 2021		
SCALE	1:1500 (11x17) 1:750 (22x34)		

JC Fresh Farms Greenhouse Expansion Phase 2B

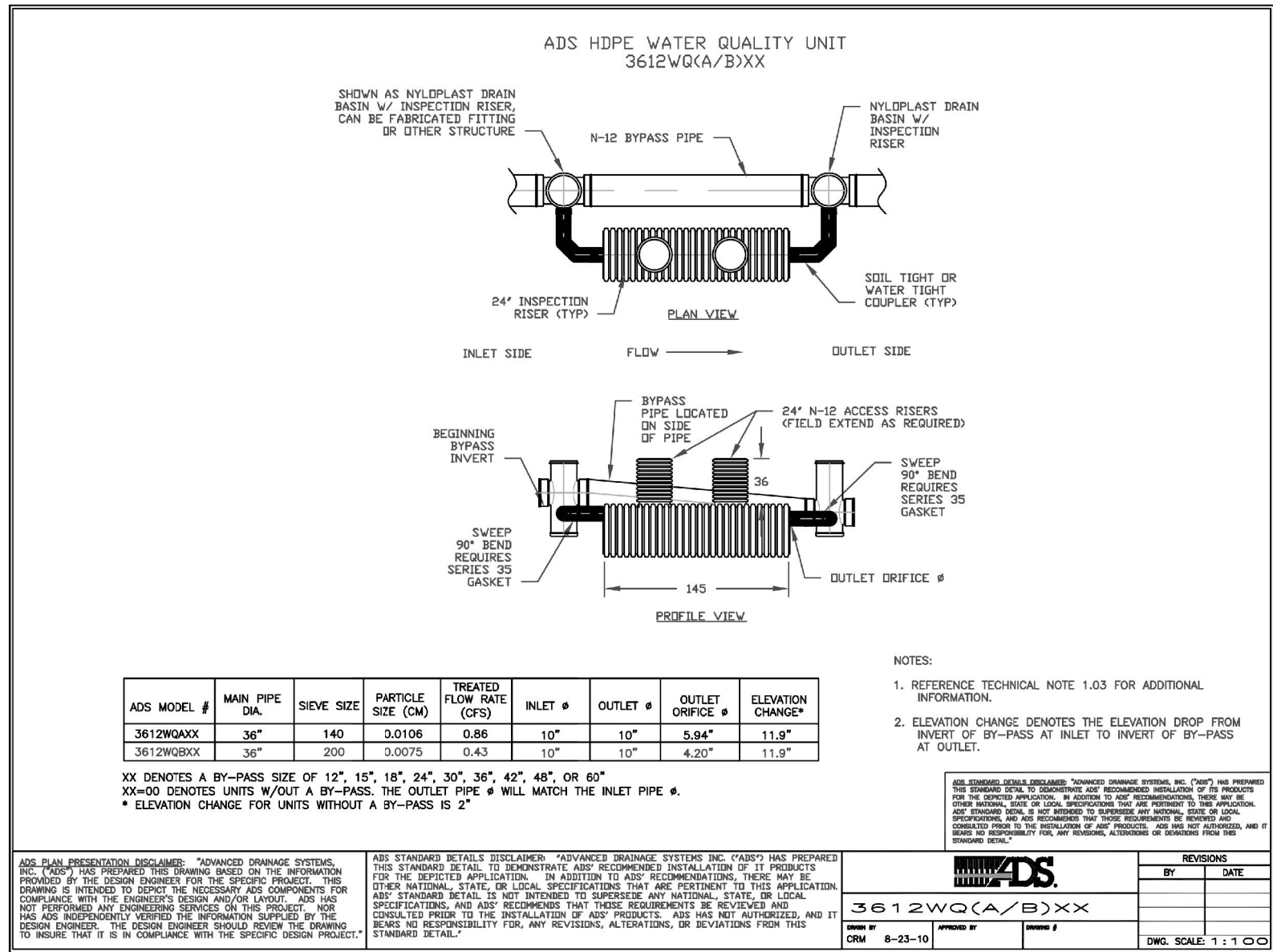
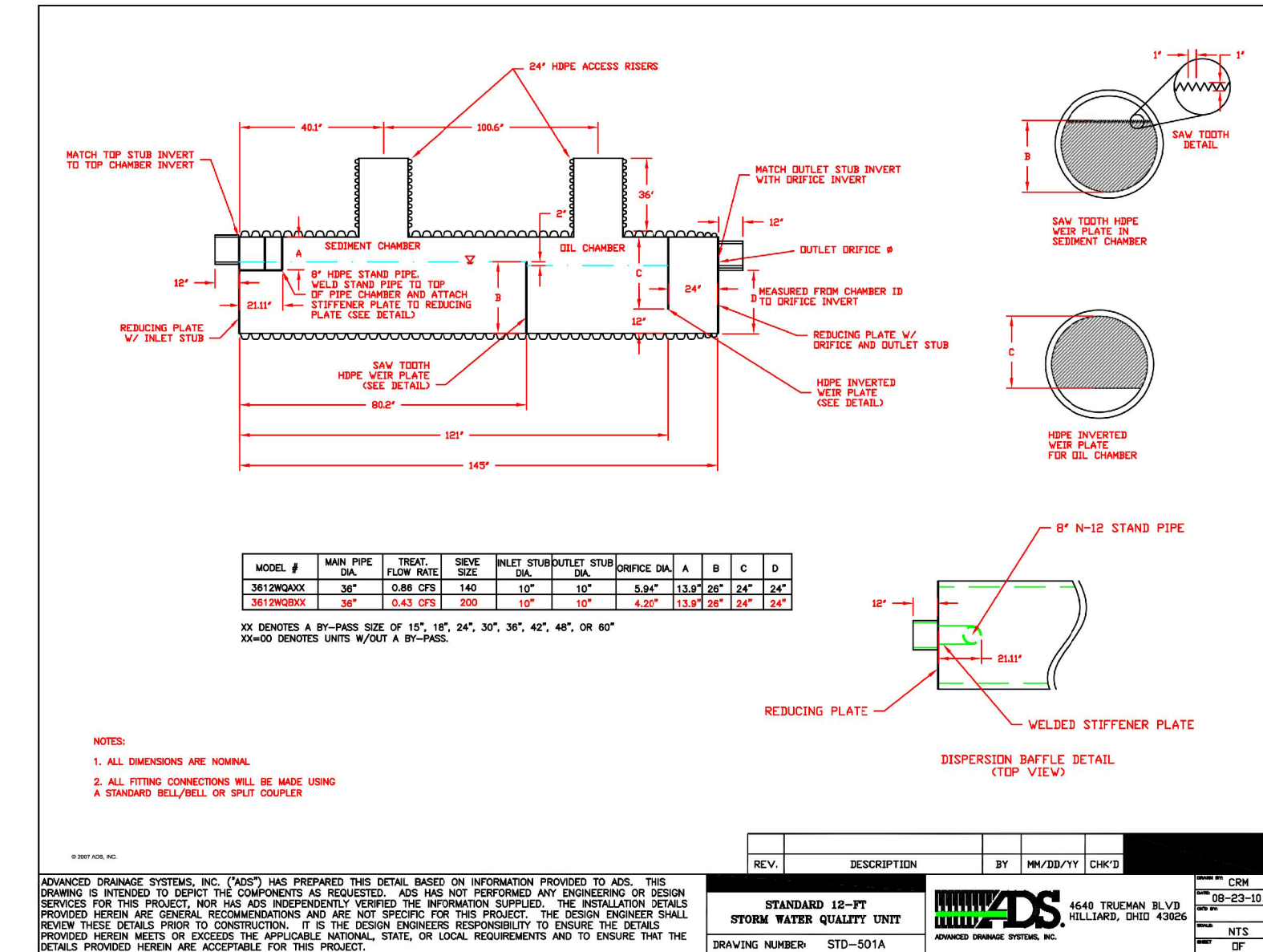
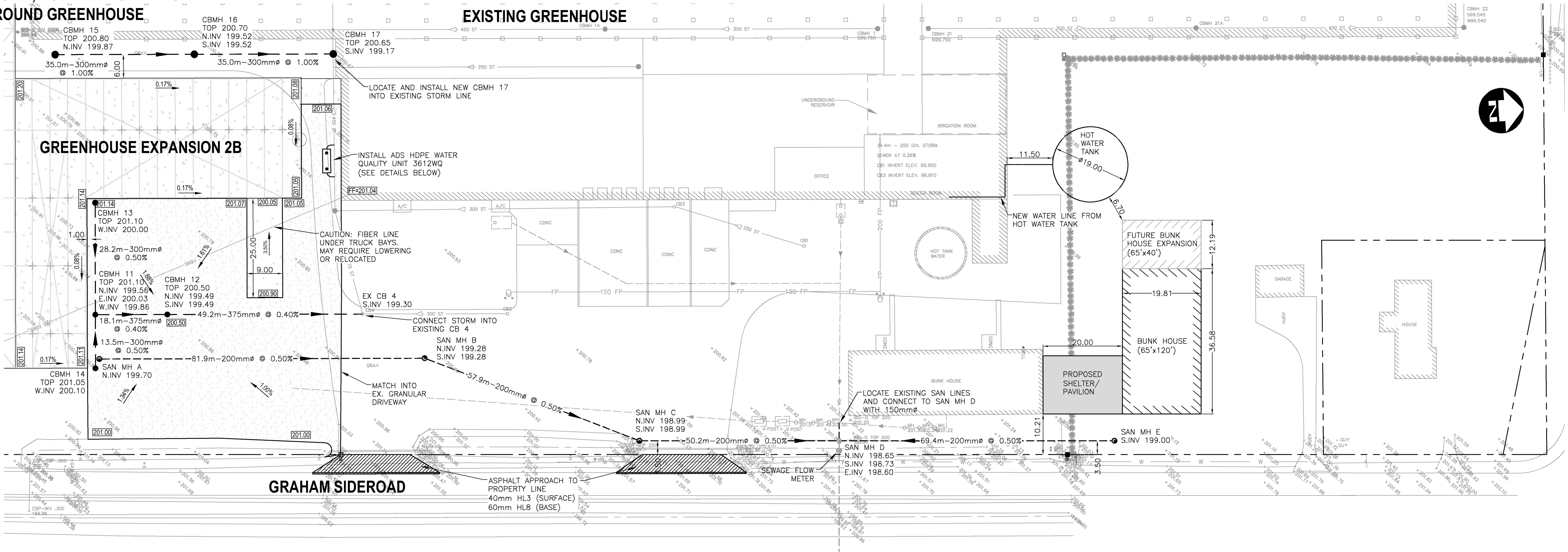
GREENHOUSE GRADING PLAN,
BUILDING DIMENSIONS AND PROPERTY OFFSETS

PROJECT NO.
081232-5000

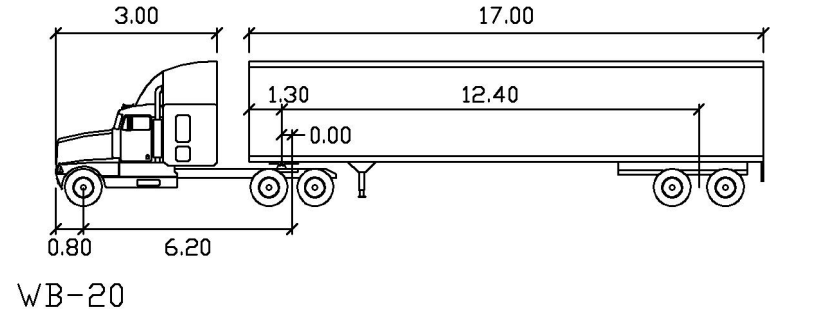
SHEET NO.

03

SEE SHEETS 02-03 FOR
STORM, POND AND GRADING
AROUND GREENHOUSE



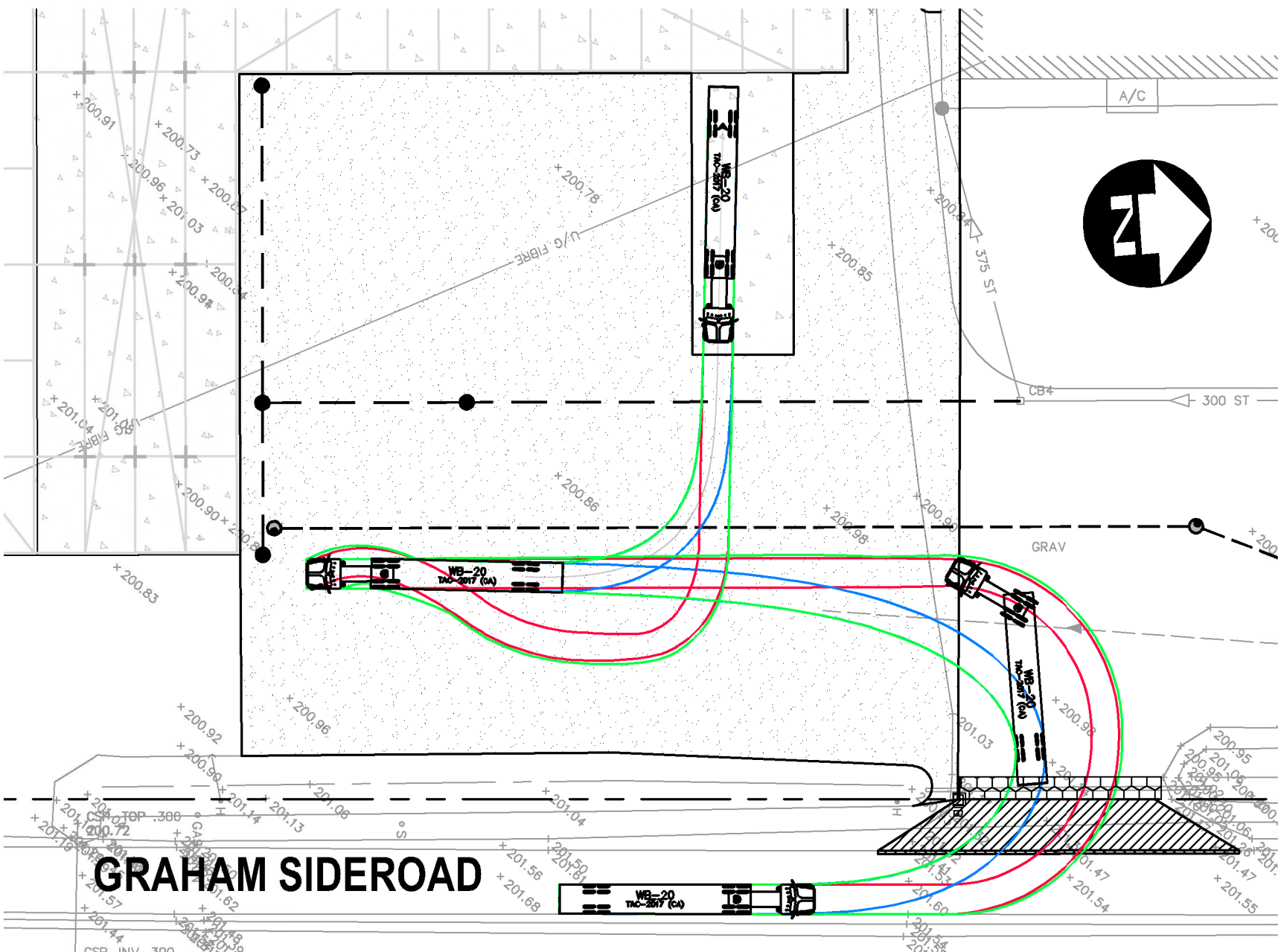
- LEGEND:
- NEW GRANULAR 400mm GRAN 'A'
 - NEW ASPHALT 40mm HL3 (SURFACE) 60mm HL8 (BASE)
 - STORM PIPE
 - CATCH BASIN MANHOLE
 - SANITARY PIPE
 - SANITARY MANHOLE



Tractor Width : 2.60
Trailer Width : 2.60
Tractor Track : 2.60

Lock to Lock Time : 6.0
Steering Angle : 28.2
Articulating Angle : 70.0

TRUCK TURNING DETAIL



Conditions of Use

Verify elevations and/or dimensions on drawing prior to use. Report any discrepancies to Dillon Consulting Limited.

Do not scale dimensions from drawing.

Do not modify drawing, re-use it, or use it for purposes other than those intended at the time of its preparation without prior written permission from Dillon Consulting Limited.



DESIGN	REVIEWED	DATE	BY
NB	RM	March 10, 2021	
DRAWN	CHECKED		
TKS			
DATE			
1	REVIEW	14 JAN 21	RM
NO.	ISSUED FOR	DATE	BY

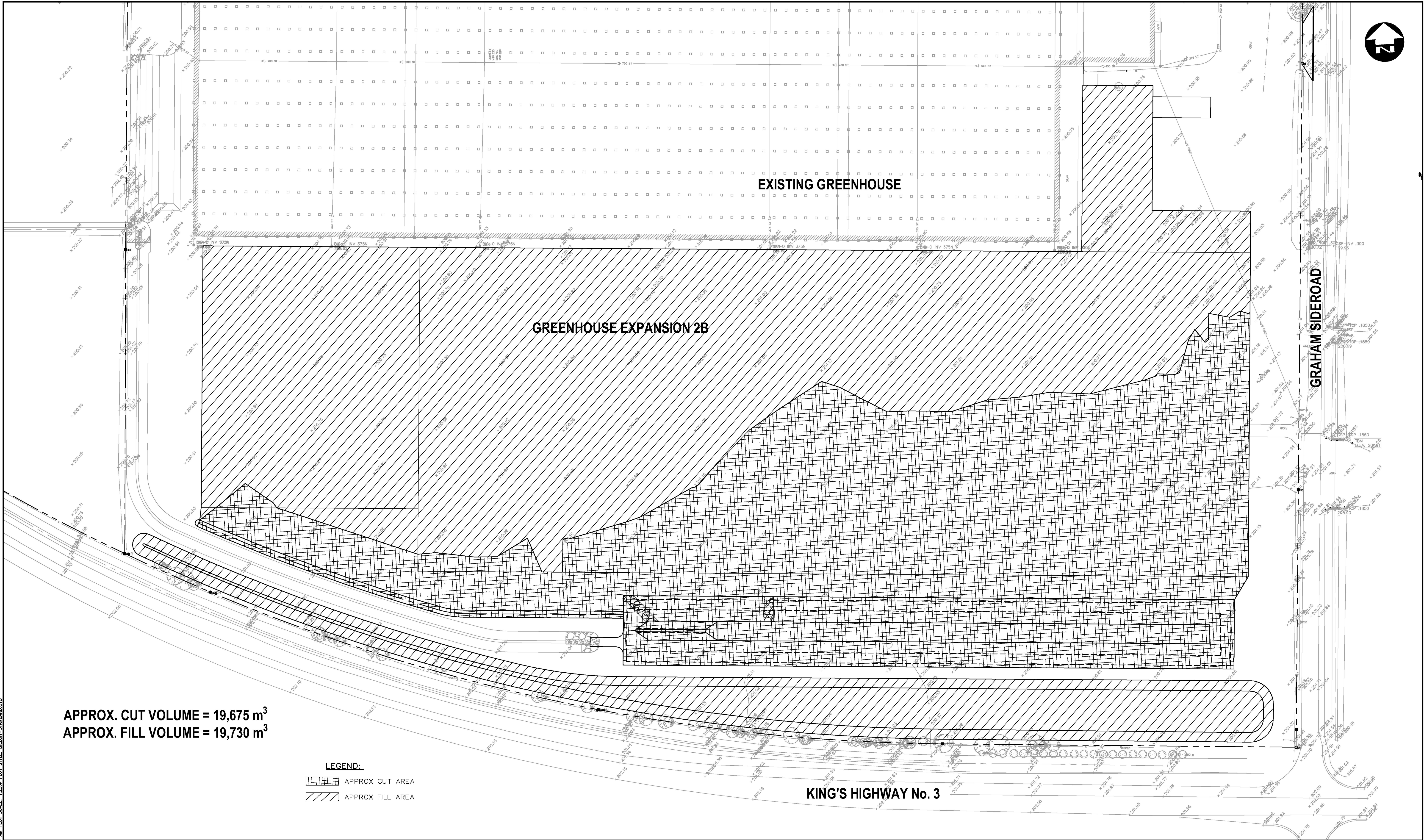
JC Fresh Farms Greenhouse Expansion Phase 2B

PROJECT NO.
081232-5000

SITE IMPROVEMENTS
PHASE 2B

SHEET NO.
04

FILENAME: C:\PW WORKING DIRECTORIES\PROJECTS TO 2017\3375\0074\0108\1232-02-MCP-CON-DWG PLOTTED BY: STRILING, DILLON CONSULTING LIMITED, 10 FIFTH STREET SOUTH, CHATHAM, ONTARIO, N7M 4M4, PHONE (519) 354-7802, FAX (519) 354-2060
PLOT DATE: 2021-03-10 @ 10:36:55 AM PLOT SCALE: 1:25.4 PLOT STYLE: DILLON-STANDARD.CTB



APPROX. CUT VOLUME = 19,675 m³
APPROX. FILL VOLUME = 19,730 m³

LEGEND:
[Hatched Box] APPROX CUT AREA
[Diagonal Hatched Box] APPROX FILL AREA

Conditions of Use

Verify elevations and/or dimensions on drawing prior to use.
Report any discrepancies to Dillon Consulting Limited.

Do not scale dimensions from drawing.

Do not modify drawing, re-use it, or use it for purposes other than those intended at the time of its preparation without prior written permission from Dillon Consulting Limited.



						DESIGN	NB	REVIEWED BY	RM	JC Fresh Farms Greenhouse Expansion Phase 2B			PROJECT NO.	081232-5000
						DRAWN	TKS	CHECKED BY		CUT AND FILL PLAN			SHEET NO.	05
						DATE	March 10, 2021							
						SCALE	1:1500 (11x17) 1:750 (22x34)							
1	REVIEW			14 JAN 21	RM									
No.	ISSUED FOR			DATE	BY									