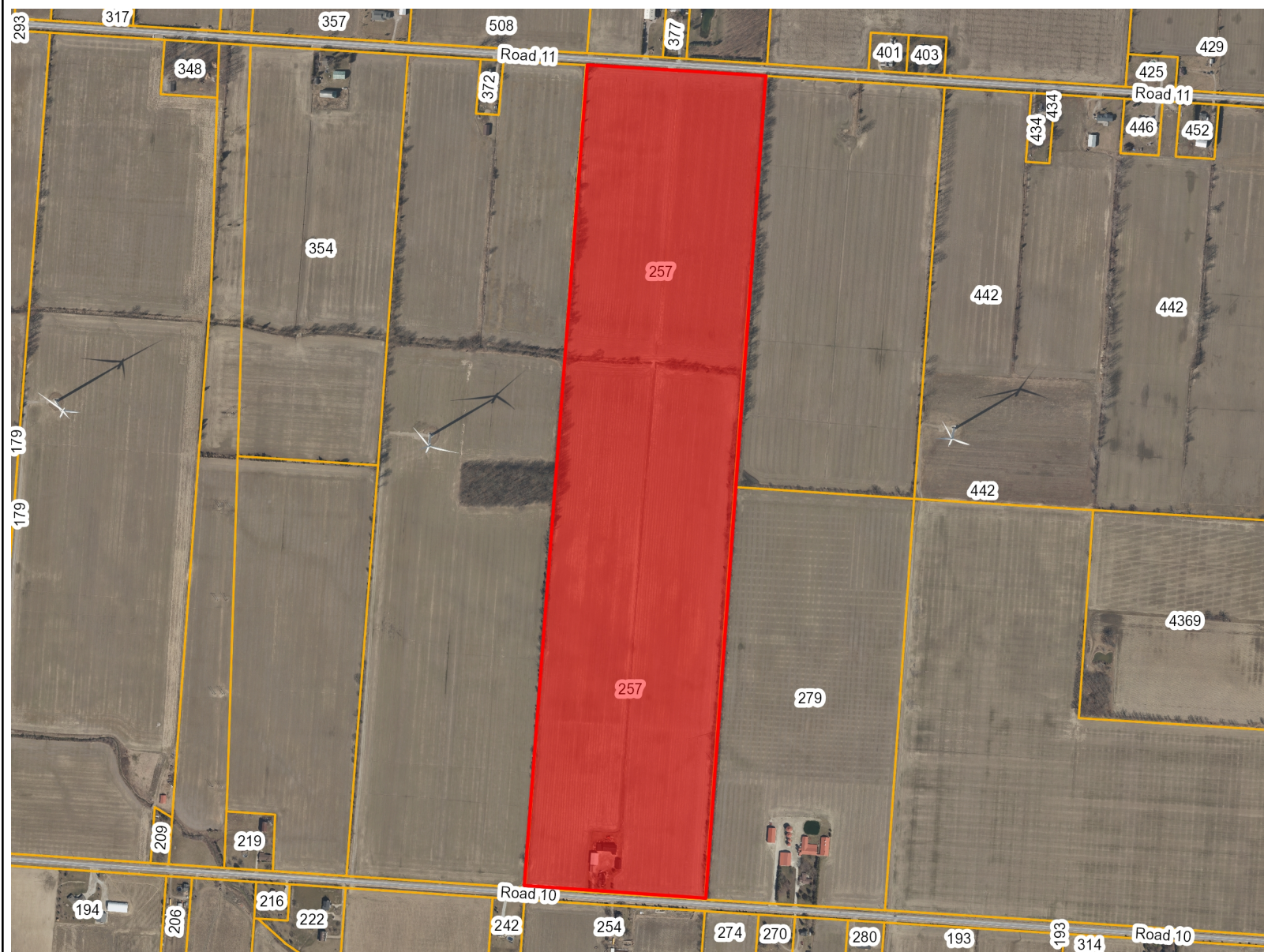


Appendix A - Location Map



B/06/20 & ZBA/08/20



Notes

257 Road 10 E

THIS MAP IS NOT TO BE USED FOR NAVIGATION
Copyright the Corporation of the County of Essex, 2012. Data herein is provided by the Corporation of the County of Essex on an 'as is' basis.
Assessment parcel provided by Teranet Enterprises Inc. Data layers that appear on this map may or may not be accurate, current, or otherwise reliable.



Legend

Essex Municipalities

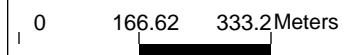
<all other values>

Kingsville

Street

Severance

Kingsville Assessment



1: 9,996



6/25/2020