

SCHEDULE				
PART	LOT	CONCESSION	PIN	AREA (m²)
1	PART OF LOT 22	11	PART OF PIN 75153-0086(LT)	3613.80
GEOGRAPHIC TOWNSHIP OF GOSFIELD				

PIN SUMMARY – PART 1 IS PART OF PIN 75153-0086(LT).

PLAN OF SURVEY OF  
PART OF LOT 22  
CONCESSION 11  
GEOGRAPHIC TOWNSHIP OF GOSFIELD  
TOWN OF KINGSVILLE  
COUNTY OF ESSEX

SCALE 1 : 750 METRES

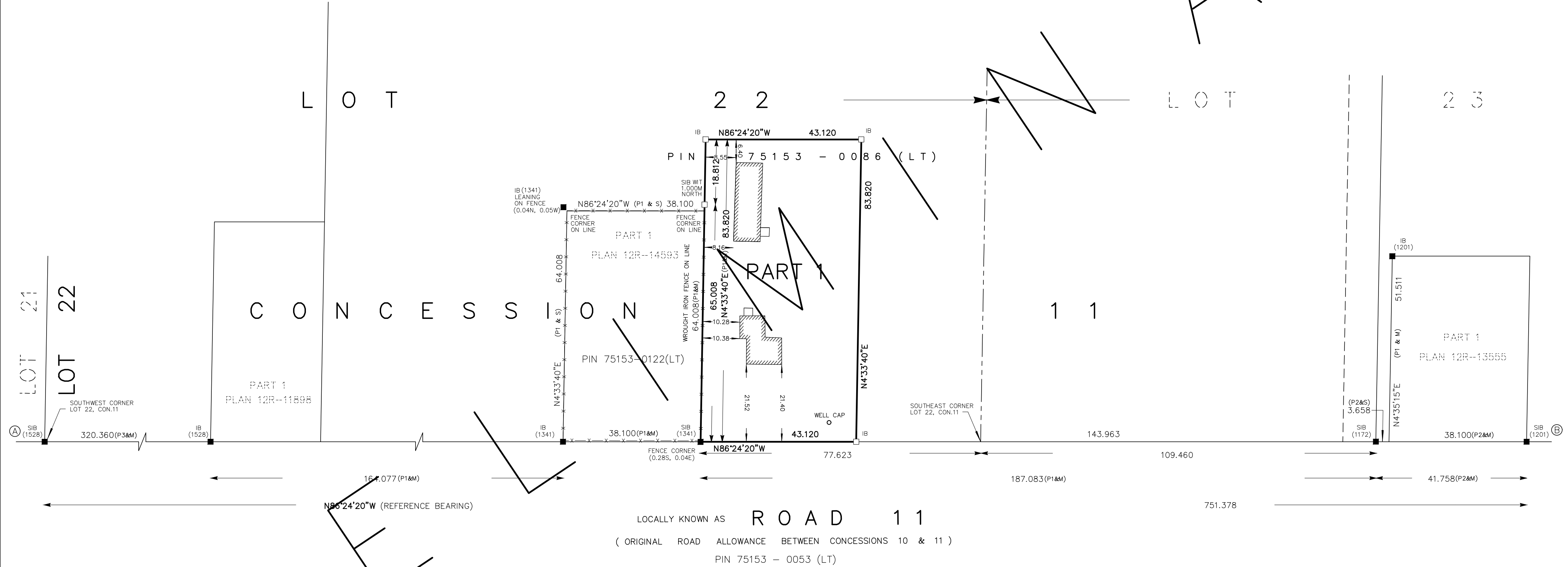


THE INTENDED PLOT SIZE OF THIS PLAN IS 457mm IN WIDTH BY 610mm IN HEIGHT WHEN PLOTTED AT AT A SCALE OF 1:750.  
SURVEYORS ON SITE INC.

COORDINATES BELOW ARE DERIVED FROM NETWORK RTK GPS OBSERVATIONS (SMARTNET) AND ARE REFERRED TO UTM ZONE 17, NAD83 (CSRS) (2010.0).		
COORDINATES COMPLY WITH THE RURAL ABSOLUTE ACCURACY PER SEC. 14(2) OF O.REG. 216/10.		
POINT ID	NORTHING	EASTING
Ⓐ	4669119.2	362405.1
Ⓑ	4669072.1	363154.8
COORDINATES CANNOT, IN THEMSELVES, BE USED TO RE-ESTABLISH CORNERS OR BOUNDARIES SHOWN ON THIS PLAN.		

LEGEND

□	.....	MONUMENT PLANTED
■	.....	MONUMENT FOUND
SIB	.....	STANDARD IRON BAR
IB	.....	IRON BAR
P1	.....	PLAN 12R-14593
P2	.....	PLAN 12R-13555
P3	.....	PLAN 12R-11898
M	.....	MEASURED
S	.....	SET
1341	.....	RICHARD W. MURRAY
1201	.....	CLARKE, MATTHEWS LTD.
1528	.....	VERHAEGEN, STUBBERFIELD, HARTLEY, BREWER, BEZAIRE INC.
1172	.....	VERHAEGEN, STUBBERFIELD, HARTLEY, BREWER, BEZAIRE INC.
1040	.....	WILLIAM J. SETTERINGTON LTD.



SURVEYOR'S CERTIFICATE

I CERTIFY THAT:

- THIS SURVEY AND PLAN ARE CORRECT AND IN ACCORDANCE WITH THE SURVEYS ACT, THE SURVEYORS ACT, THE LAND TITLES ACT AND THE REGULATIONS MADE UNDER THEM.
- THE SURVEY WAS COMPLETED ON THE xxth DAY OF xxxxxxx, 2019.

(DATE)

MICHAEL W. HAINES  
ONTARIO LAND SURVEYOR

THIS PLAN OF SURVEY RELATES TO AOLS PLAN SUBMISSION FORM NUMBER 2104756.

NOTES

DISTANCES AND COORDINATES SHOWN ON THIS PLAN ARE IN METRES AND CAN BE CONVERTED TO FEET BY DIVIDING BY 0.3048.

DISTANCES ON THIS PLAN ARE HORIZONTAL GROUND DISTANCES AND CAN BE CONVERTED TO GRID DISTANCES BY MULTIPLYING BY THE AVERAGE COMBINED SCALE FACTOR OF 0.999807.

BEARINGS ARE UTM GRID DERIVED FROM NETWORK RTK GPS OBSERVATIONS (SMARTNET) ON MONUMENTS Ⓐ AND Ⓑ AS SHOWN HEREON, HAVING A GRID BEARING OF N86°24'20"W, NAD83 CSRS (2010.0) AND ARE REFERRED TO THE CENTRAL MERIDIAN OF UTM ZONE 17 (81° W LONGITUDE).

FOR BEARING COMPARISONS, THE FOLLOWING ROTATIONS WERE APPLIED:  
P1, P3 – 1°04'10" COUNTER CLOCKWISE.  
P2 – 1°05'00" COUNTER CLOCKWISE.



3244 WALKER ROAD, UNIT 3  
WINDSOR, ONTARIO  
N8W 3R8  
519-818-0767  
www.surveyorsonsite.com