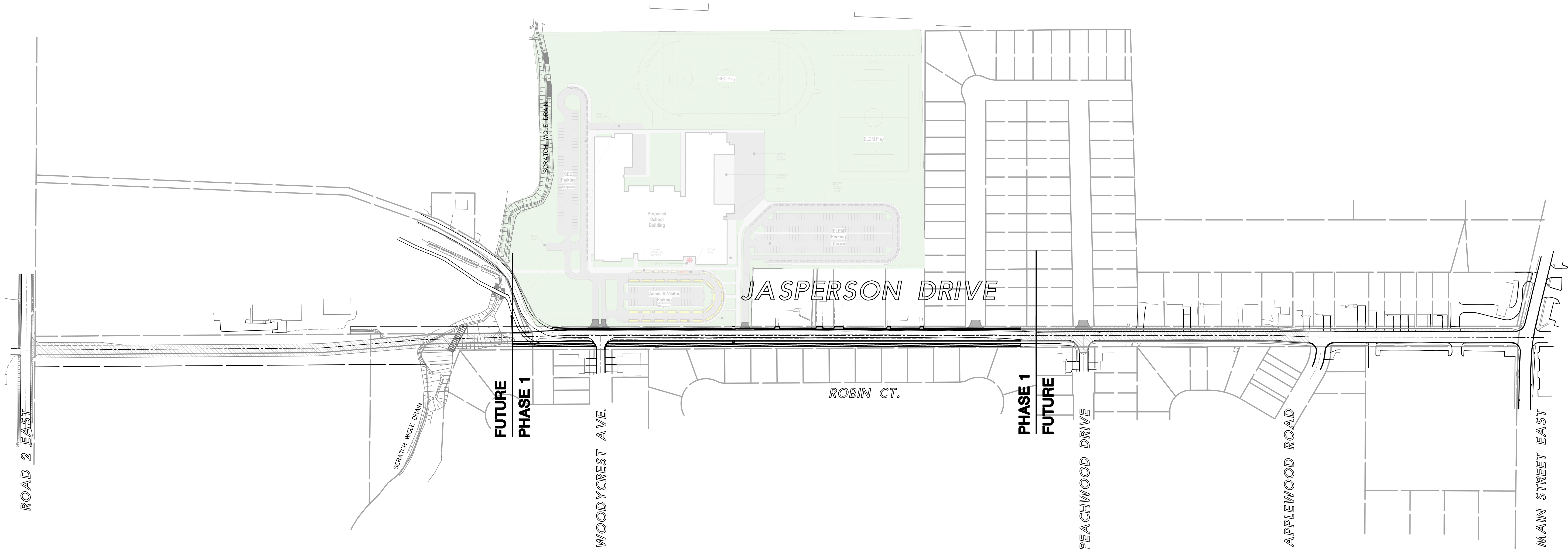
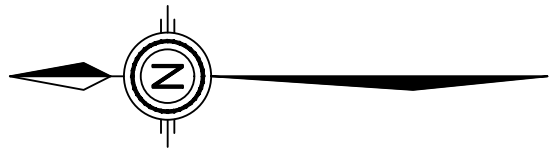


100mm
80mm
60mm
40mm
20mm
0
1:1
Original Sheet Size ARCH D

Appendix A



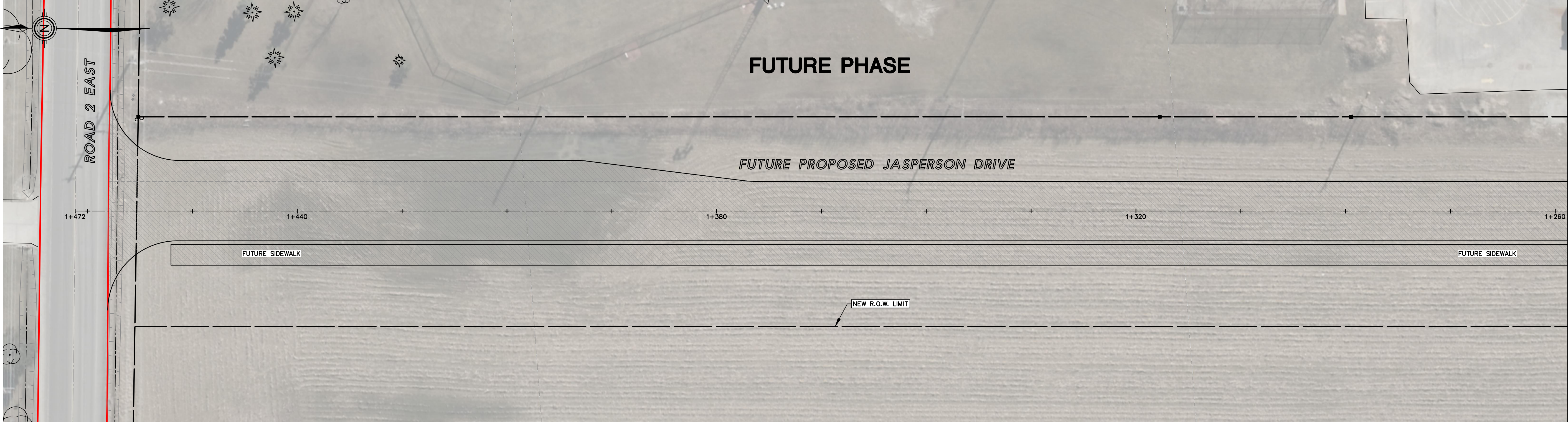
Z:\PROJECTS\ENGINEERING\2018\18064\CADD\DWG\18064_Design.dwg Last Saved: 2020/03/10

GENERAL NOTES:

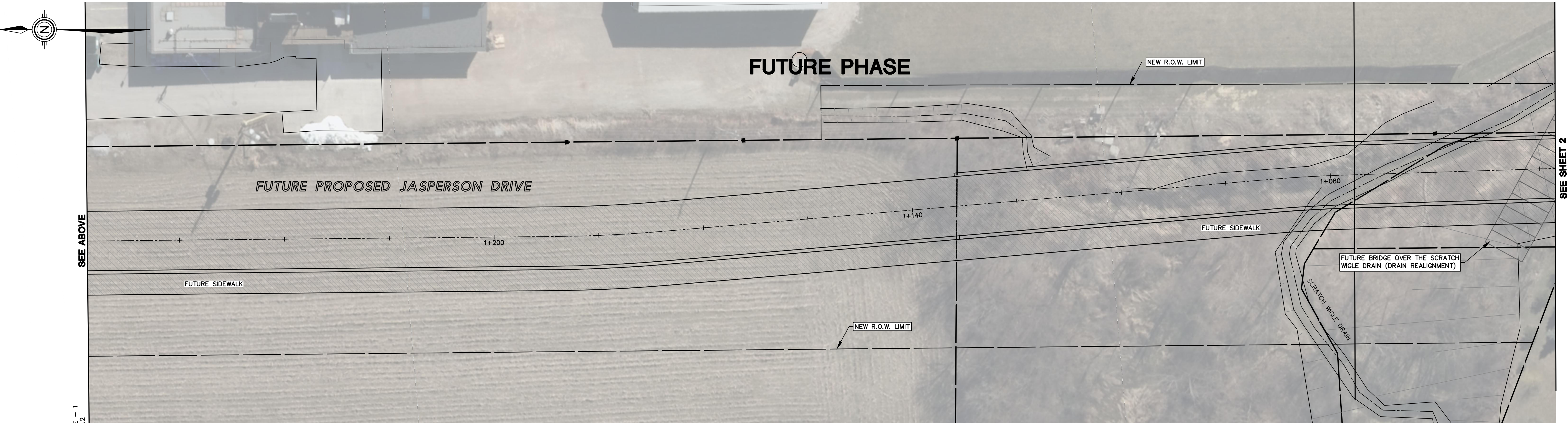
- THE ACCURACY OF THE UTILITIES SHOWN ON THESE DRAWINGS ARE NOT GUARANTEED BY THE OWNER OR N.J. PERALTA ENGINEERING LTD. OTHER UTILITIES MAY BE PRESENT OR THE UTILITIES SHOWN MAY DIFFER IN SIZE OR LOCATION SHOWN. CONTRACTOR TO SUPPORT UTILITIES WHEN ENCOUNTERED.
- ALL PLAN DIMENSIONS AND ELEVATIONS SHOWN IN METRES UNLESS OTHERWISE NOTED. DIMENSIONS NOTE HORIZONTAL DISTANCE ALONG GROUND UNLESS OTHERWISE NOTED.

| | | |
|--|---------------|----------|
| | | |
| | | |
| | | |
| ISSUED FOR: | BY: | YY/MM/DD |
| ISSUES/REVISIONS: | | |
| <div><p>N. J. Peralta Engineering Ltd. Consulting Engineers</p><p>45 Division Street North Kingsville, ON N9Y 1E1 P: 519-733-6587 www.peraltaengineering.com</p></div> | | |
| ENGINEERING STAMP: | | |
| CLIENT/PROJECT/ADDRESS | | |
| <p>TOWN OF KINGSVILLE</p> <p>JASPERSON DRIVE ROAD RECONSTRUCTION</p> <p>MAIN STREET WEST, KINGSVILLE</p> | | |
| SHEET TITLE: | | |
| <p>JASPERSON DRIVE</p> <p>PROJECT OVERVIEW PLAN</p> | | |
| DESIGNED BY: | DATE: | |
| J.H. / B.N.D. | MAR. 13, 2020 | |
| DRAWN BY: | SCALE: | |
| J.H. / B.N.D. | 1:2,000 (H) | |
| SHEET: | OF: | |
| 1 | 4 | |
| PROJECT No.: E18-064 | | |

Z:\PROJECTS\ENGINEERING\2018\18064\CAD\DWG\18064.dwg Design.dwg Last Saved: 2020/03/10



RECONSTRUCTION WORKS PLAN
Scale = 1:300



RECONSTRUCTION WORKS PLAN
Scale = 1:300

LEGEND:

- EXISTING EDGE OF PAVEMENT
- PROPOSED EDGE OF PAVEMENT

| | | |
|-------------|-----|----------|
| | | |
| | | |
| | | |
| ISSUED FOR: | BY: | YY/MM/DD |

ISSUES/REVISIONS:

N. J. Peralta
Engineering Ltd.
Consulting Engineers

45 Division Street North
Kingsville, ON N9Y 1E1
P: 519-733-6587
www.peraltaengineering.com

ENGINEERING STAMP:

CLIENT/PROJECT/ADDRESS

TOWN OF KINGSVILLE

JASPERSON DRIVE
ROAD
RECONSTRUCTION

MAIN STREET WEST, KINGSVILLE

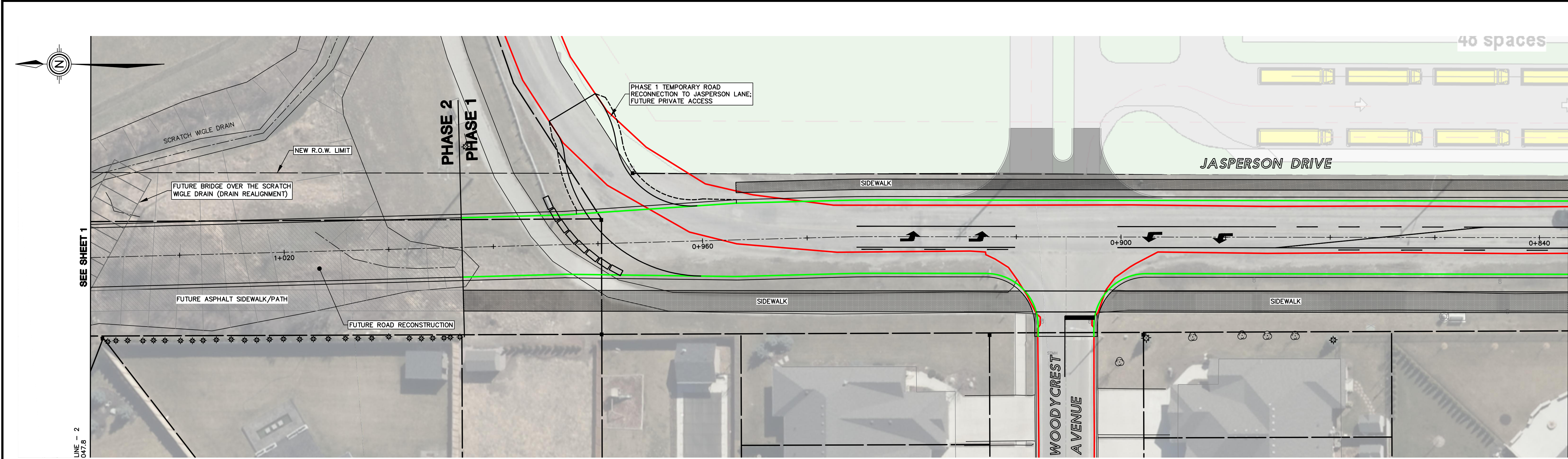
SHEET TITLE:

JASPERSON DRIVE

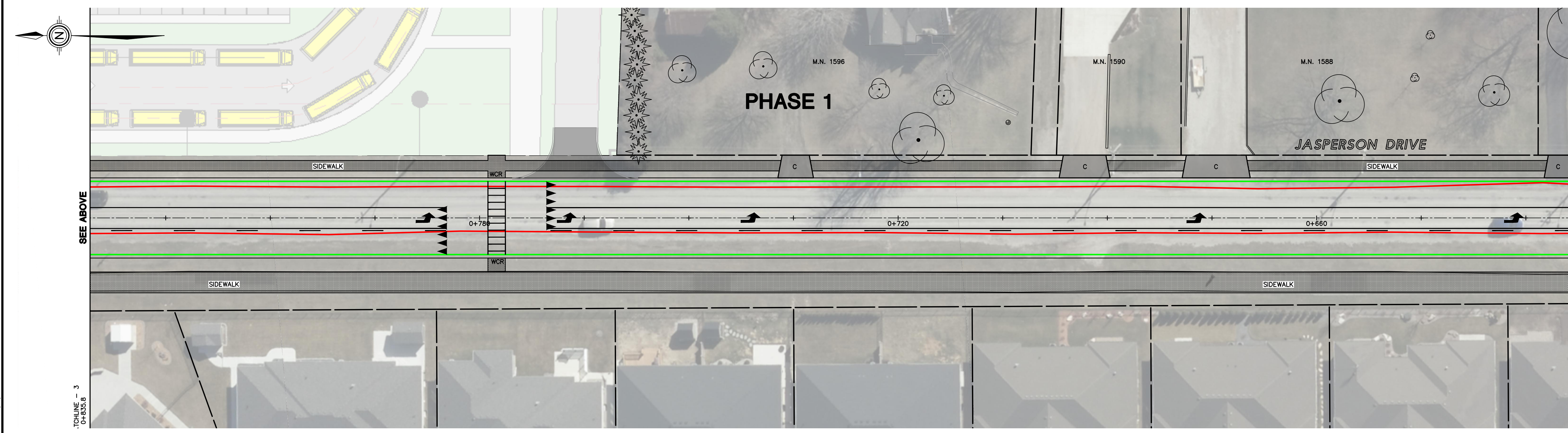
RECONSTRUCTION WORKS PLAN

| | |
|-------------------------------|------------------------|
| DESIGNED BY: J.H. / B.N.D. | DATE: MAR. 13, 2020 |
| DRAWN BY: J.H. / B.N.D. | SCALE: 1:300 (H) |
| SHEET: 2 | OF: 4 |
| PROJECT No.: E18-064 | |

Z:\PROJECTS\ENGINEERING\2018\18064\CAD\DWG\18064_Design.dwg Last Saved: 2020/03/10



RECONSTRUCTION WORKS PLAN
Scale = 1:300

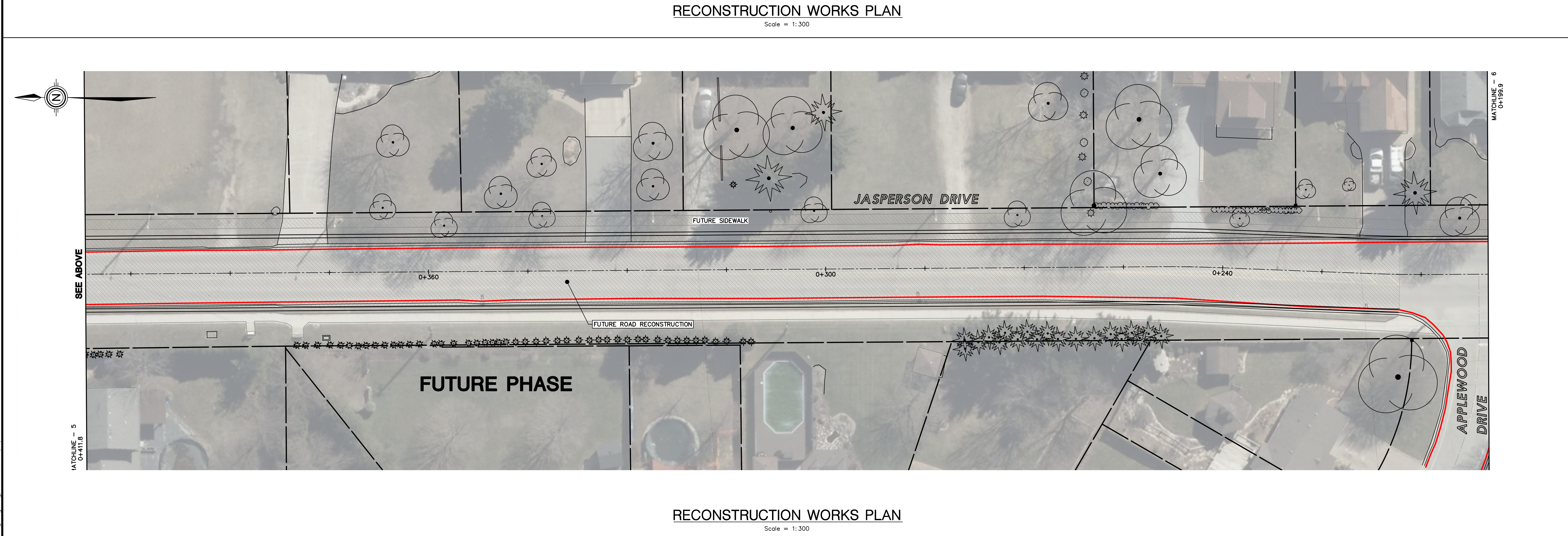
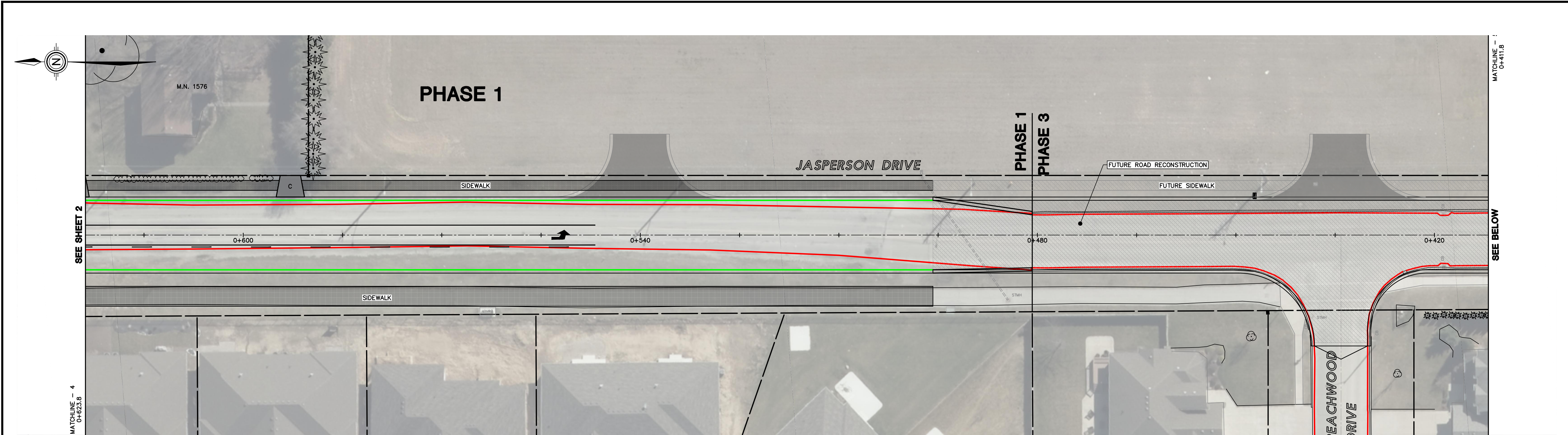


RECONSTRUCTION WORKS PLAN
Scale = 1:300

- LEGEND:
- EXISTING EDGE OF PAVEMENT
 - PROPOSED EDGE OF PAVEMENT

| | | | |
|---|---------------|--------|---------------|
| ISSUED FOR: | | BY: | YY/MM/DD |
| ISSUES/REVISIONS: | | | |
| N. J. Peralta Engineering Ltd. Consulting Engineers | | | |
| 45 Division Street North Kingsville, ON N9Y 1E1 P: 519-733-6587 www.peraltaengineering.com | | | |
| ENGINEERING STAMP: | | | |
| CLIENT/PROJECT/ADDRESS | | | |
| TOWN OF KINGSVILLE JASPERSON DRIVE ROAD RECONSTRUCTION MAIN STREET WEST, KINGSVILLE | | | |
| SHEET TITLE: | | | |
| JASPERSON DRIVE RECONSTRUCTION WORKS PLAN | | | |
| DESIGNED BY: | J.H. / B.N.D. | DATE: | MAR. 13, 2020 |
| DRAWN BY: | J.H. / B.N.D. | SCALE: | 1:300 (H) |
| SHEET: | 3 | OF: | 4 |
| PROJECT No.: E18-064 | | | |

Z:\PROJECTS\ENGINEERING\2018\18064\CAD\DWG\18064_Design.dwg Last Saved: 2020/03/10



LEGEND:

— EXISTING EDGE OF PAVEMENT

— PROPOSED EDGE OF PAVEMENT

| | | |
|---|------------------------|--|
| | | |
| | | |
| | | |
| ISSUED FOR: BY: YY/MM/DD | | |
| ISSUES/REVISIONS: | | |
| N. J. Peralta Engineering Ltd. Consulting Engineers | | |
| 45 Division Street North Kingsville, ON N9Y 1E1 P: 519-733-6587 www.peraltaengineering.com | | |
| ENGINEERING STAMP: | | |
| CLIENT/PROJECT/ADDRESS | | |
| TOWN OF KINGSVILLE JASPERSON DRIVE ROAD RECONSTRUCTION MAIN STREET WEST, KINGSVILLE | | |
| SHEET TITLE: | | |
| JASPERSON DRIVE RECONSTRUCTION WORKS PLAN | | |
| DESIGNED BY: J.H. / B.N.D. | DATE: MAR. 13, 2020 | |
| DRAWN BY: J.H. / B.N.D. | SCALE: 1:300 (H) | |
| SHEET: 4 | OF: 4 | |
| PROJECT No.: E18-064 | | |