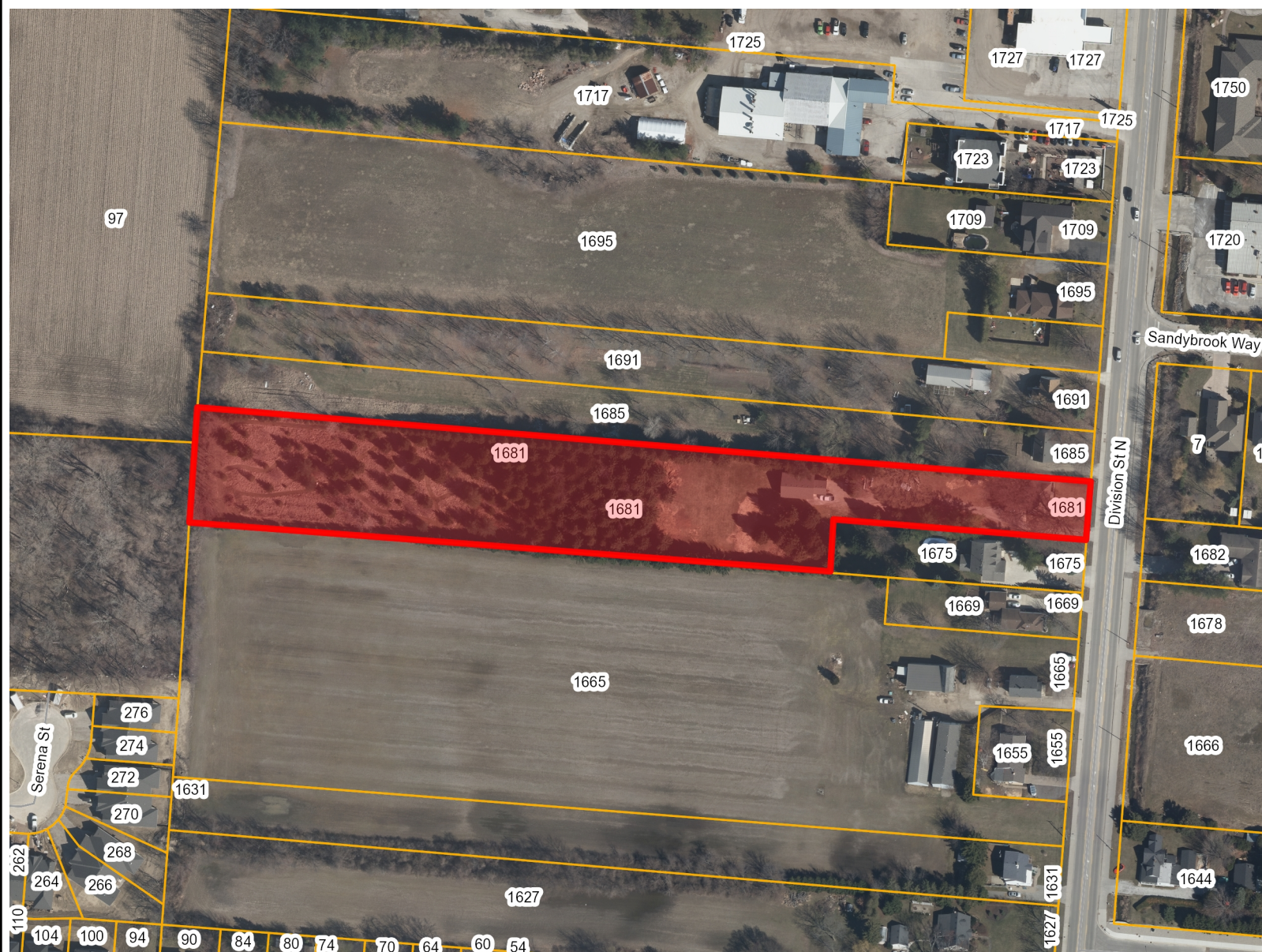


## Essex Municipalities

-  <all other values>  
 Kingsville  
 Street  
 Severance  
 Kingsville Assessment



## Notes

Enter Map Description

THIS MAP IS NOT TO BE USED FOR NAVIGATION  
Copyright the Corporation of the County of Essex, 2012. Data herein is provided by the Corporation of the County of Essex on an 'as is' basis.  
Assessment parcel provided by Teranet Enterprises Inc. Data layers that appear on this map may or may not be accurate, current, or otherwise reliable.

0	38.92	77.8Meters
---	-------	------------

1: 2,335



2/7/2020