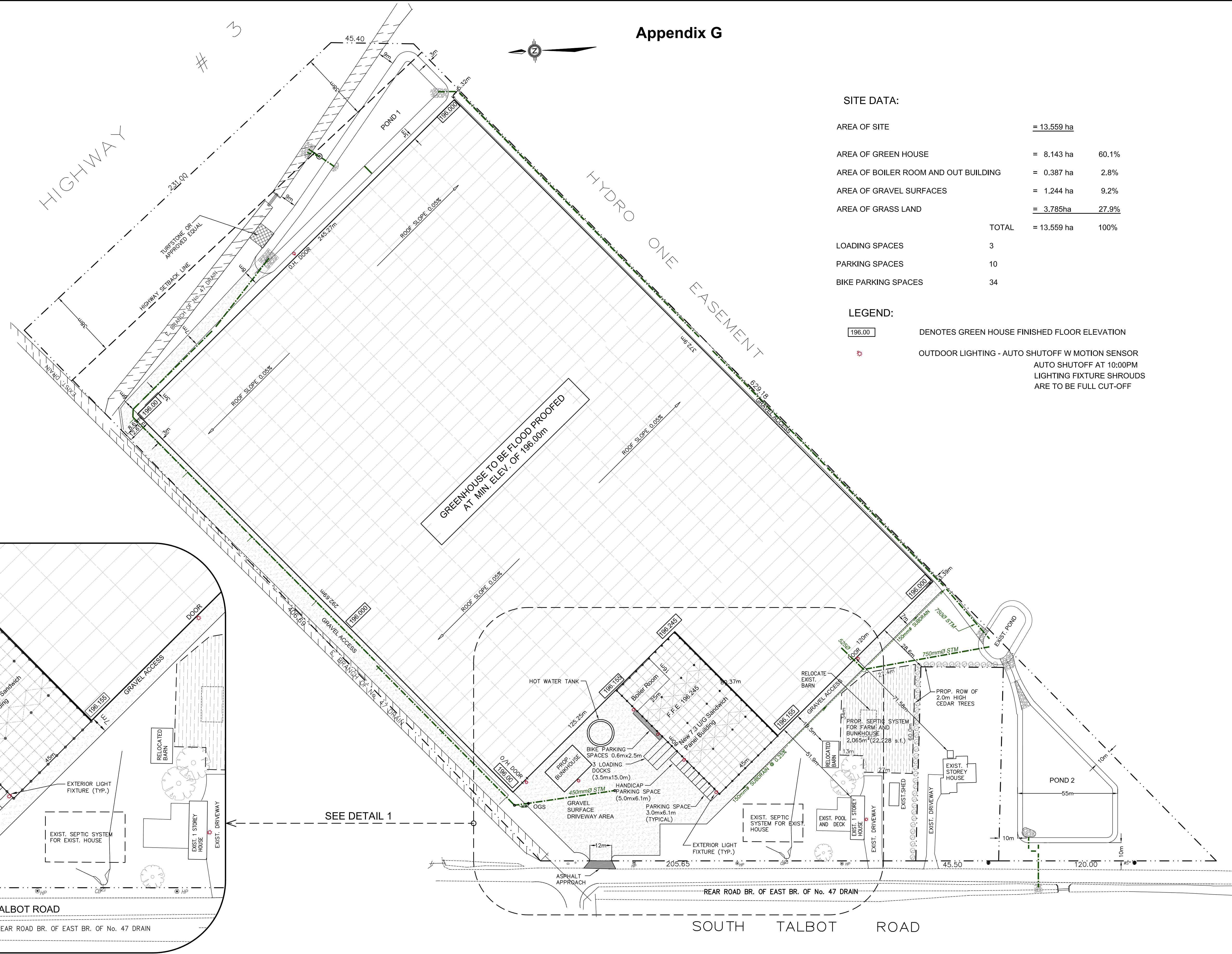


Appendix G

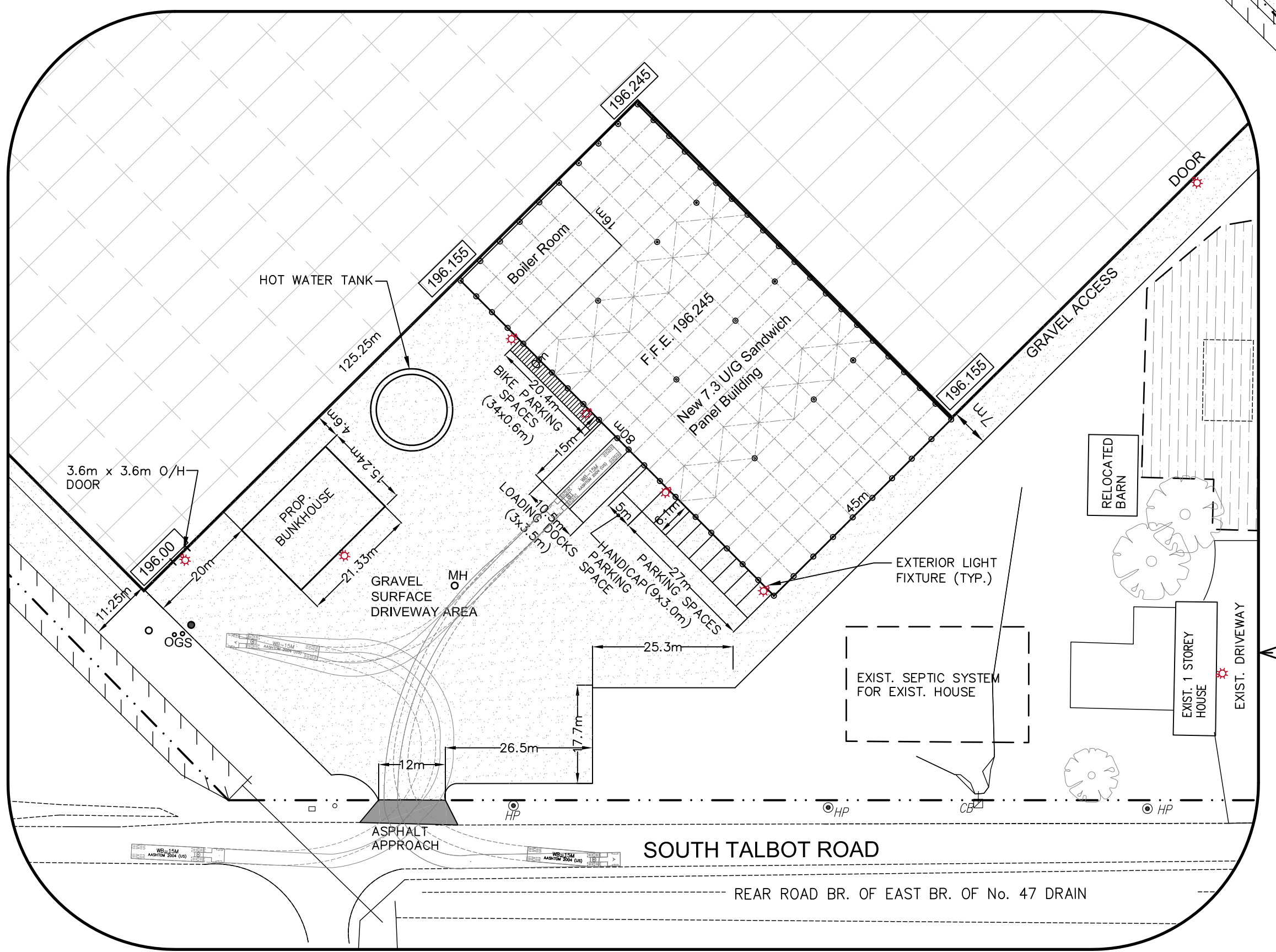


SITE DATA:

AREA OF SITE	= 13.559 ha	
AREA OF GREEN HOUSE	= 8.143 ha	60.1%
AREA OF BOILER ROOM AND OUT BUILDING	= 0.387 ha	2.8%
AREA OF GRAVEL SURFACES	= 1.244 ha	9.2%
AREA OF GRASS LAND	= 3.785ha	27.9%
TOTAL	= 13.559 ha	100%
LOADING SPACES	3	
PARKING SPACES	10	
BIKE PARKING SPACES	34	

LEGEND:

196.00	DENOTES GREEN HOUSE FINISHED FLOOR ELEVATION
	OUTDOOR LIGHTING - AUTO SHUTOFF W MOTION SENSOR AUTO SHUTOFF AT 10:00PM LIGHTING FIXTURE SHROUDS ARE TO BE FULL CUT-OFF



DETAIL 1
SCALE 1:750

RC SPENCER ASSOCIATES INC.
Consulting Engineers
Windsor 820 University Ave. W. Windsor ON N9A 5R9
Leamington 18 Talbot St. W. Leamington ON N8H 1M4
Chatham-Kent 138 King St. W. Unit 102 - Chatham ON N7M 1E3

NO.	REVISION	DATE	BY	SCALE
3.	FINAL CHANGES TO SITE PLAN	02 May, 2019	T.O./R.C.S.	
2.	MINOR AMENDMENT TO SITE PLAN	22 Mar., 2019	T.O./R.C.S.	
1.	AMENDED SITE PLAN	29 June, 2015	T.O.	
				SCALE 1:1000

WOODSIDE GREENHOUSE DEVELOPMENT		PROJECT NO. 19-842 (Former 14-393)
TOWN OF KINGSVILLE		ONTARIO
SITE PLAN		SHEET NO. 1 OF 1