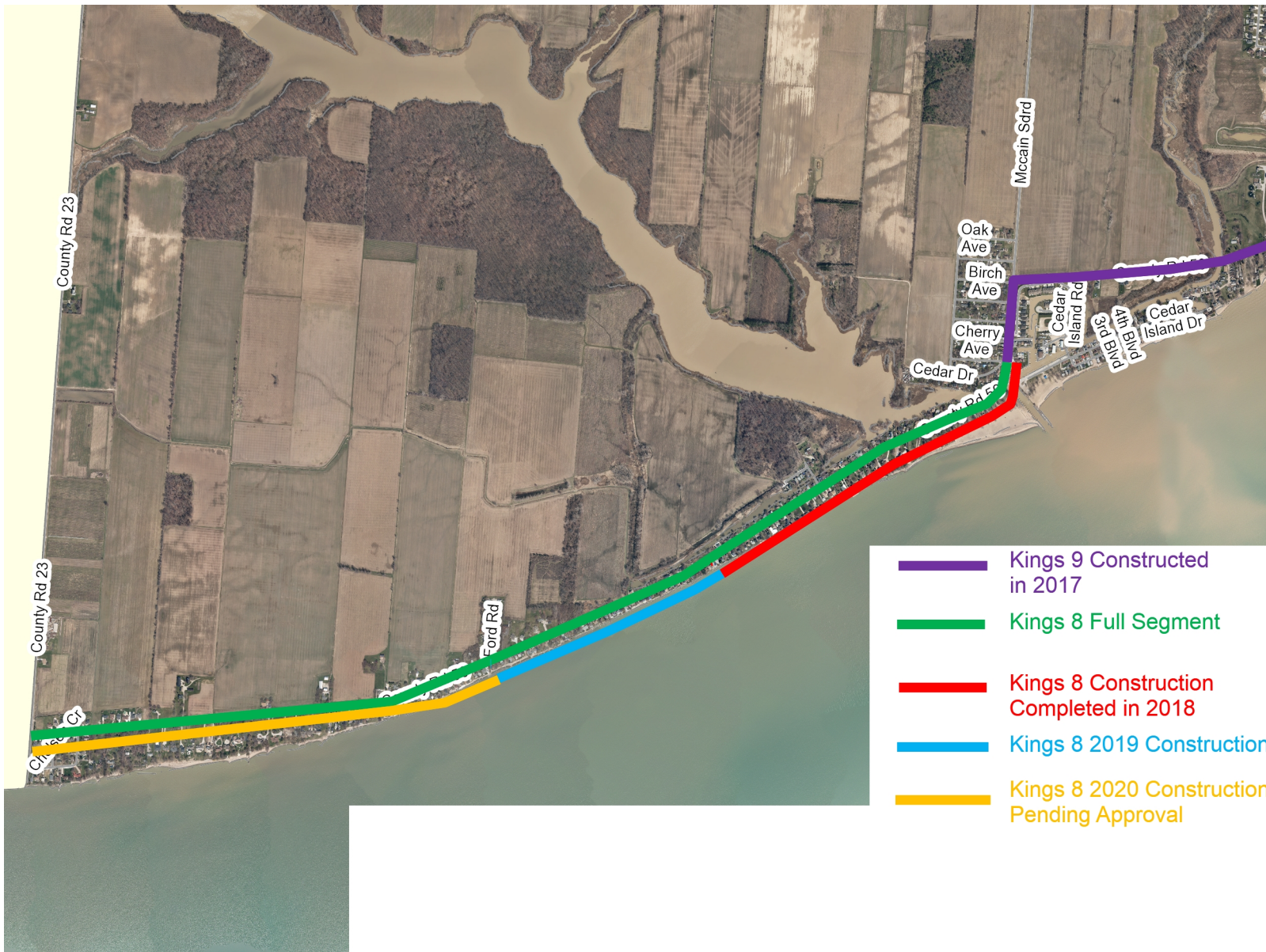


Kingsville Mapping



- Kings 9 Constructed in 2017
- Kings 8 Full Segment
- Kings 8 Construction Completed in 2018
- Kings 8 2019 Construction
- Kings 8 2020 Construction Pending Approval

Legend

- Essex Municipalities
- <all other values>
- Kingsville
- Street

Notes
 Enter Map Description

THIS MAP IS NOT TO BE USED FOR NAVIGATION
 Copyright the Corporation of the County of Essex, 2012. Data herein is provided by the Corporation of the County of Essex on an 'as is' basis. Assessment parcel provided by Teranet Enterprises Inc. Data layers that appear on this map may or may not be accurate, current, or otherwise reliable.

0 383.38 766.8 Meters

1: 23,000 7/15/2019