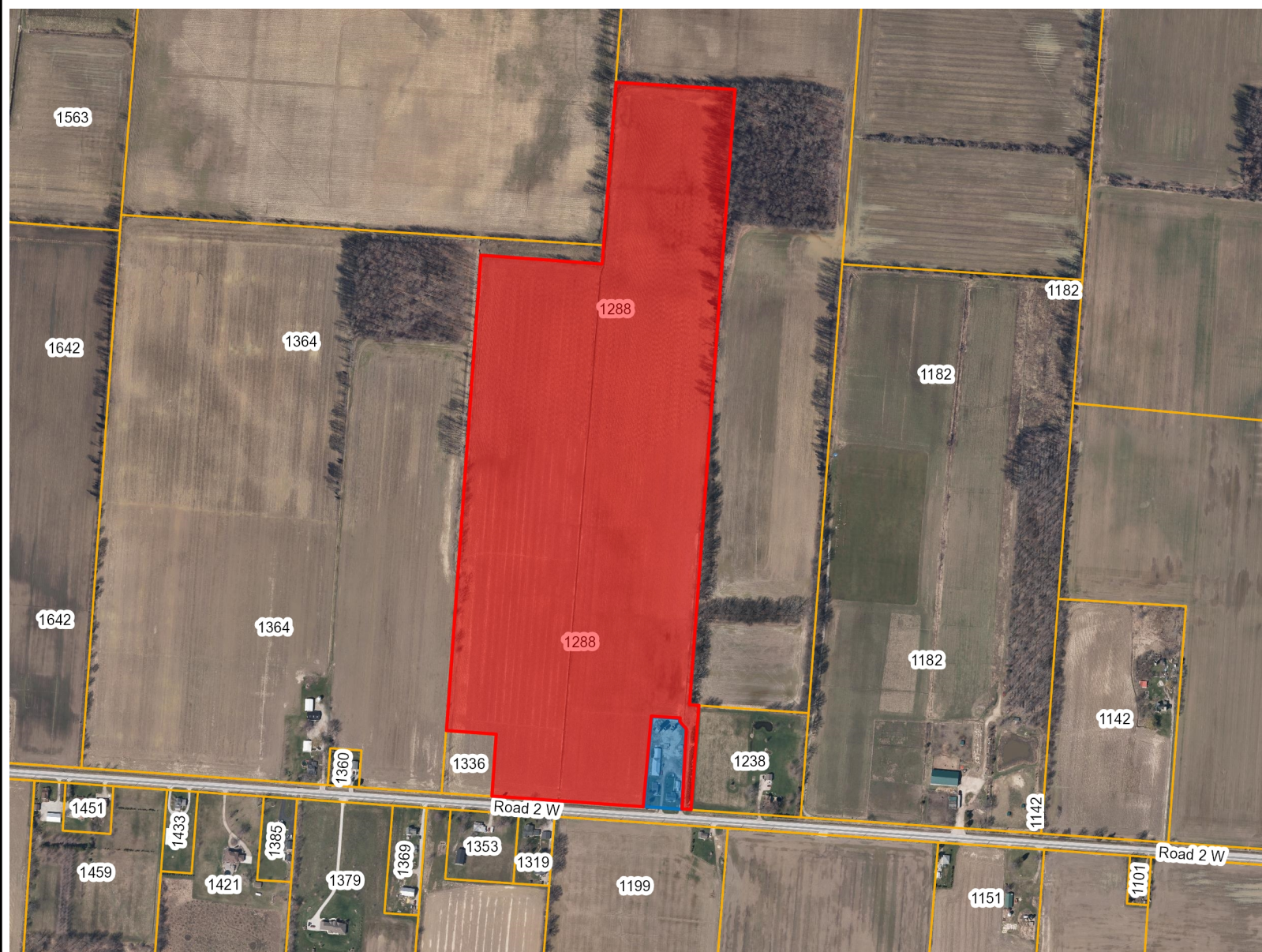


# Appendix A - ZBA/02/19 Location Map



## Legend

### Essex Municipalities

<all other values>

Kingsville

Street

Severance

Kingsville Assessment

## Notes

Blue - surplus dwelling parcels severed.

Red - remnant farm parcel to be re-zoned from A1 to A2.

THIS MAP IS NOT TO BE USED FOR NAVIGATION

Copyright the Corporation of the County of Essex, 2012. Data herein is provided by the Corporation of the County of Essex on an 'as is' basis. Assessment parcel provided by Teranet Enterprises Inc. Data layers that appear on this map may or may not be accurate, current, or otherwise reliable.

0 126.45 252.9Meters

1: 7,586



2/22/2019