

Kingsville Property Owners Group

10 December 2018 Council Meeting

Who are the Kingsville Property Owners Group

- We are a group of concerned citizens that are concerned with the prospect of greenhouses being developed in our rural communities.
- We would like to stop the development of greenhouses next to our properties.

Objective:

- Change the bylaws and zoning from A1 and A2 to lite industrial.
- Have greenhouses built in areas that are not adjacent to rural residential areas and traditional farming areas.

Current Greenhouses Complexes



Current Greenhouses Complexes



Traditional Farms



Current Zoning Definition of A1 Zoning

Permitted Structures

- Accessory structures
- Agricultural buildings
- Bunkhouse
- Dog kennels
- Enclosed storage
- Farm produce outlet
- Fruit/vegetable processing facility
- Greenhouses
- Oil doreys
- Roadside stand a single detached dwelling
- Outdoor storage Seasonal worker housing

| SUBSECTION 7.1 | | AGRICULTURE (A1) (general agricultural zone) | |
|-------------------|---|---|---|
| a) Permitted Uses | | | |
| | Agricultural Uses | Rural Residential | Specialty Crops/All other Uses |
| i) Main use | Agriculture Agricultural related service Agriculture research stations Agriculture co-op Agricultural operations Agricultural operations, intensive Agriculture produce storage, packaging, processing facility and/or shipping Aquaculture Dog kennel Farm produce outlet Farm machinery/equipment sales, rental, storage facility, parts and servicing facility Fish farm Forestry Use Fruit/vegetable processing facility Garden centres Greenhouses in compliance with Section 7.1 d) Hunting/gaming/wildlife preserve Landing strip and flying clubs | Rural Residence | Aquaculture Farm produce outlet Fish farm Forestry use Greenhouses in compliance with 7.1 d) Hunting/gaming/wildlife preserve Orchards Specialty crop as defined by Provincial Evaluation procedures Telecommunication tower Tree farms Wayside pits and quarries Winery |

Concerns with living next to Greenhouses

- Light pollution
- Noise Pollution
- Obstructed views
- Loss of Wildlife habitat
- Environmental Impacts on wetlands
- Garbage



Concerns with living next to Greenhouses

Light
Pollution



Concerns with living next to Greenhouses

Transportation Noise 24/7



Concerns with living next to Greenhouses

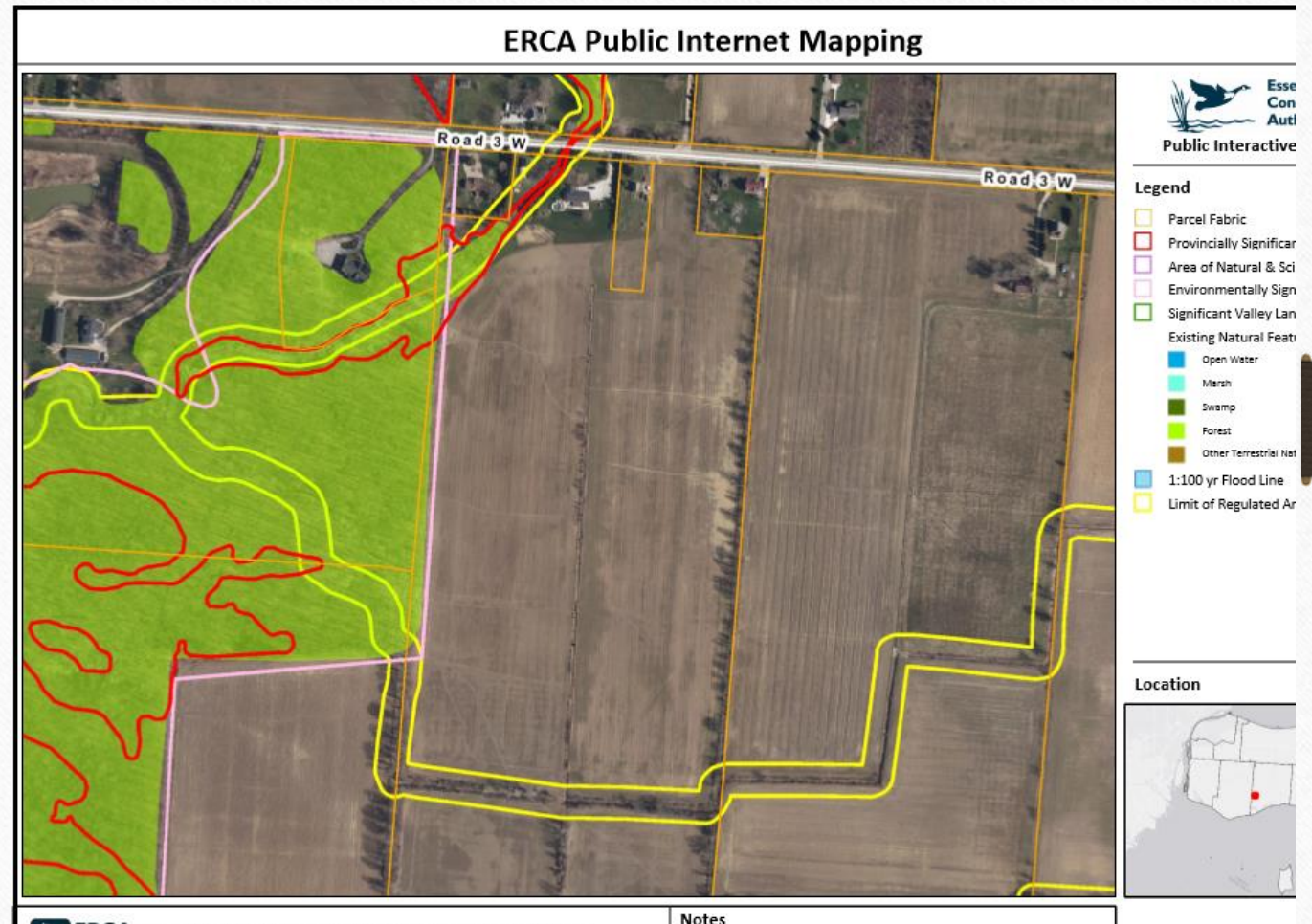


Garbage and dilapidated equipment

- The request being made is not to stand in the way of green house growth but not to the greenhouses in a zone that does not impact the rural communities
- We are asking for the governing bodies to consider changes to the zoning of these enormous complexes
- The consideration in the planning of our town and province to put these complexes in areas where the infrastructure can support the greenhouses needs.
- Where the impact to wildlife habitat and our waterways will not be impacted
- Where the noise and light will not effect neighbouring residences

The property that started it all

- This property is adjacent to significant forest area
- As well there are Provincially Significant Wetland (PSW) Area of Natural & Scientific Interest (ANSI)
- In our county there is not enough green space.
- There could be significant impact to the wetlands and forested area



Our Neighbours

Deer that live in the bush



Turtles and hummingbirds



Of course there are many other creatures but we only have 10 minutes

The views that we have chosen to live with are

Current View



Possible View



Go to Change.org to sign our petition <https://www.change.org/p/all-three-levels-of-government-federal-stop-greenhouse-complexes-in-our-rural-communities>