

# LAKESIDE PARK SANITARY SEWER REPLACEMENT

## PRE DESIGN COST ESTIMATE

Sept 26 2017

Town of Kingsville

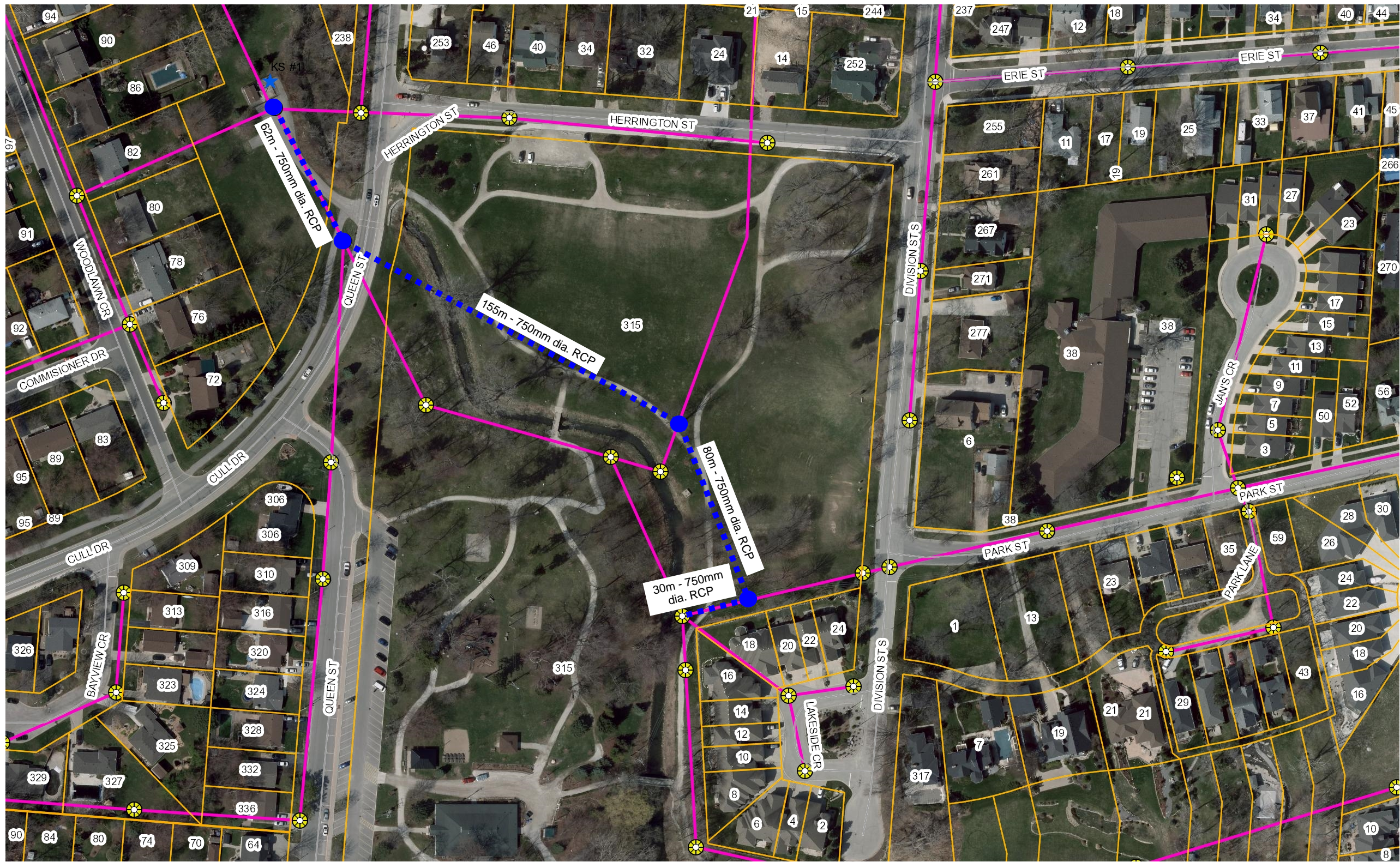
### Notes:

- 1 The below costs are a predeisgn estimate based on installing a 750mm concrete sewer as shown on the appended plan.
- 2 The below costs do not include any utility relocations costs (if required)
- 3 The below costs do not include any approval fees (MOECC, ERCA, etc)

ITEM NO.	DESCRIPTION	UNIT	QTY. COMP.	UNIT PRICE	AMOUNT TO DATE - \$
<b>SECTION 'A' - REMOVALS</b>					
1	Catchbasin and Manhole Removal	Each	2.00	\$5,000.00	\$10,000.00
2	Adjust Existing Manhole	Each	1.00	\$5,000.00	\$5,000.00
3	Remove Existing Sanitary Sewer	m	91.00	\$250.00	\$22,750.00
4	Abandon Existing Sanitary Sewer	m	270.00	\$100.00	\$27,000.00
<b>TOTAL SECTION 'A' - REMOVALS</b>					<b>\$64,750.00</b>
<b>SECTION 'B' - SANITARY SEWERS</b>					
5	Bore Pits and Dewatering	L.S.	100%	\$150,000.00	\$150,000.00
6	Sanitary Sewers:				
	a) 750 mm dia., RCP CL 100-D (Open Cut)	m	92.00	\$800.00	\$73,600.00
	b) 750mm dia, RCP CL 100-D (Jack and Bore/Trenchless)	m	235.00	\$5,000.00	\$1,175,000.00
	c) Connect to Existing Sewers/Manholes	Each	5.00	\$7,500.00	\$37,500.00
	d) Connect to Existing Pump Station	Each	1.00	\$20,000.00	\$20,000.00
7	Sanitary Sewer Manholes:				
	a) 1500 mm dia.	Each	4.00	\$15,000.00	\$60,000.00
<b>TOTAL SECTION 'B' - SANITARY SEWERS</b>					<b>\$1,366,100.00</b>
<b>SECTION 'C' - MISCELLANEOUS</b>					
8	CCTV Existing Sewer	L.S.	100%	\$5,000.00	\$5,000.00
9	Site Access (Lakeside Park)	L.S.	100%	\$10,000.00	\$10,000.00
10	Reinstate Pump Station Access Road and Path	L.S.	100%	\$20,000.00	\$20,000.00
11	Imported Topsoil	m <sup>2</sup>	500.00	\$5.00	\$2,500.00
12	Hydraulic Seed and Mulch	m <sup>2</sup>	500.00	\$2.00	\$1,000.00
13	Sod ( <b>Provisional</b> )	m <sup>2</sup>	500.00	\$6.50	\$3,250.00
14	Maintenance of Seeding	L.S.	100%	\$5,000.00	\$5,000.00
15	Sewer Bypass ( <b>Provisional</b> )	L.S.	100%	\$100,000.00	\$100,000.00
16	Project Signs	Each	2.00	\$750.00	\$1,500.00
17	Utility Coordination	L.S.	100%	\$5,000.00	\$5,000.00
18	Engineer's Site Office	L.S.	100%	\$5,000.00	\$5,000.00
<b>TOTAL SECTION 'C' - MISCELLANEOUS</b>					<b>\$123,250.00</b>
<b>CONTINGENCY (20%)</b>					<b>\$310,820.00</b>
TOTAL SECTION 'A' - REMOVALS					\$64,750.00
TOTAL SECTION 'B' - SANITARY SEWERS					\$1,366,100.00
TOTAL SECTION 'C' - MISCELLANEOUS					\$123,250.00
CONTINGENCY					\$310,820.00
<b>SUBTOTAL (excluding H.S.T.)</b>					<b>\$1,864,920.00</b>
Engineering (15% of Construction Costs)					\$279,738.00
<b>CONSTRUCTION COST ESTIMATE (excluding H.S.T.)</b>					<b>\$2,144,658.00</b>



Lakeside Park - Sanitary Sewer Cost Estimate Sewer Alignment



- Legend**
- Essex Municipalities
    - <all other values>
    - Kingsville
  - Street
  - Severance
  - Kingsville Assessment
  - Sanitary Manholes
  - Sanitary Lines (Existing)
  - Pump Stations
  - Proposed Sanitary Sewers

**Notes**

Sanitary Sewer

THIS MAP IS NOT TO BE USED FOR NAVIGATION  
Copyright the Corporation of the County of Essex, 2012. Data herein is provided by the Corporation of the County of Essex on an 'as is' basis. Assessment parcel provided by Teranet Enterprises Inc. Data layers that appear on this map may or may not be accurate, current, or otherwise reliable.